

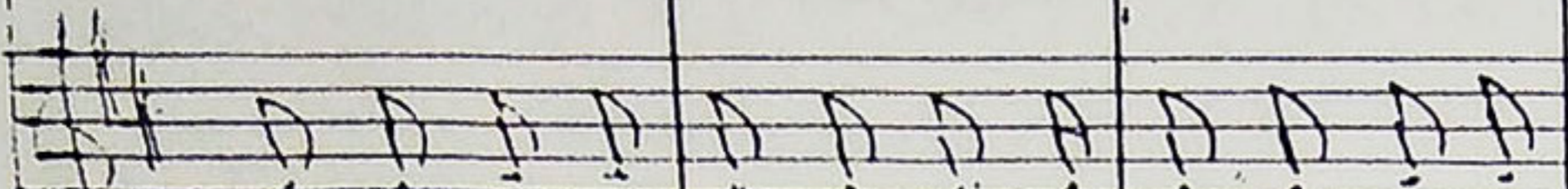
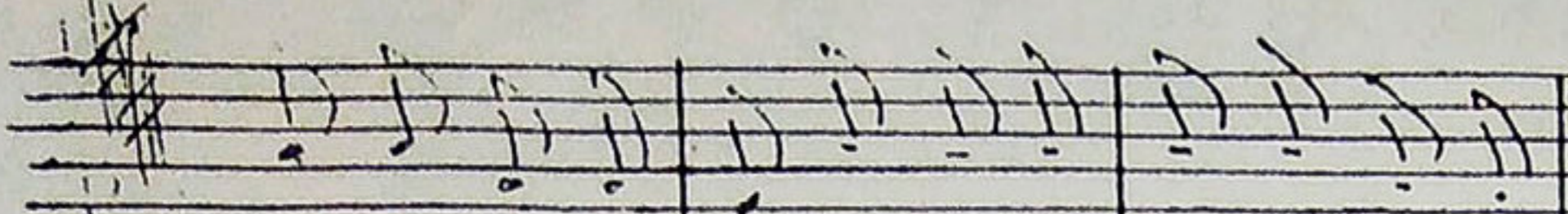
Handwritten musical score for the first system. It consists of three staves. The top staff is a vocal line in G major, 4/4 time, with lyrics: "Я ду, ду, ду, ду, ду, ду. Я го-ро-шек мо-ло-чъ на чы-хон точ-кы на рѣи-горѣ". The middle staff is a piano accompaniment with chords and some melodic lines. The bottom staff is a bass line with chords. There are some handwritten notes like "ла" and "ба" above the vocal line.

Саманайка

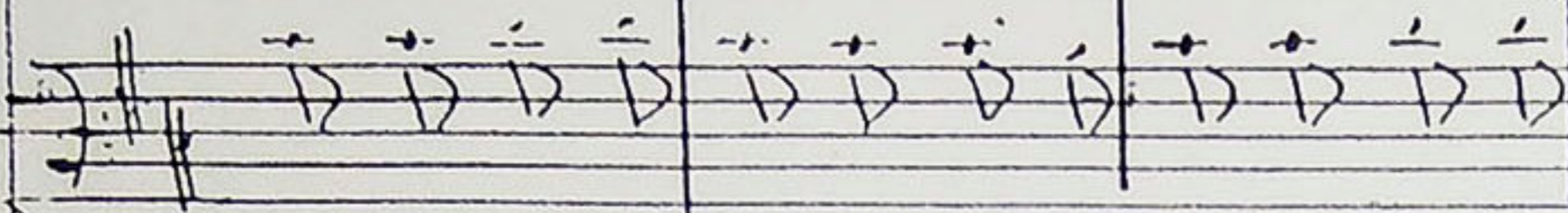
Handwritten musical score for the Samanayka section. It is a single staff with rhythmic patterns, likely for a dance or instrumental piece. The notation includes various rhythmic values and accents.

Handwritten musical score for the second system. It consists of three staves. The top staff is a vocal line with lyrics: "- точ-кы. Ко мие кы-рѣи) ка бя-жит (оу) ко-но-па-т(би) ка бя-жит. А я кы-рѣи)". The middle staff is a piano accompaniment with chords and some melodic lines. The bottom staff is a bass line with chords. There is a circled number "2" above the lyrics.

Handwritten musical score for the final section. It is a single staff with rhythmic patterns, similar to the Samanayka section. The notation includes various rhythmic values and accents.



-F#  
УА-НО. М(и) О-НА Кле-Р(и) XY 30-80-М(и)



гале все кунета по 2-му.

