

Johann - Ernst Altenburg (1734 - 1801)

Concerto à 7 Trompeten und Pauken aus
"Versuch einer Anleitung zur heroisch-musikalischen Trompeter - und Pauker - Kunst", Halle 1795

Allegro

Clarino - Solo

Clarino 1 - 1. Chor

Clarino 2 - 1. Chor

Prinzipal - Chor 1

Clarino 1 - 2. Chor

Clarino 2 - 2. Chor

Prinzipal - 2. Chor

Timpani

f

4

Cl. - Solo

Cl. 1 - 1. Ch.

Cl. 2 - 1. Ch.

Pr. - 1. Ch.

Cl. 1 - 2. Ch.

Cl. 2 - 2. Ch.

Pr. - 2. Ch.

Timp.

7

Cl. - Solo

Cl. 1 - 1. Ch.

Cl. 2 - 1. Ch.

Pr. - 1. Ch.

Cl. 1 - 2. Ch.

Cl. 2 - 2. Ch.

Pr. - 2. Ch.

Timp.

10

Cl. - Solo

Cl. 1 - 1. Ch.

Cl. 2 - 1. Ch.

Pr. - 1. Ch.

Cl. 1 - 2. Ch.

Cl. 2 - 2. Ch.

Pr. - 2. Ch.

Timp.

Solo

f

13

Cl. - Solo

Cl. 1 - 1. Ch.

Cl. 2 - 1. Ch.

Pr. - 1. Ch.

Cl. 1 - 2. Ch.

Cl. 2 - 2. Ch.

Pr. - 2. Ch.

Timp.

16

Cl. - Solo

Cl. 1 - 1. Ch.

Cl. 2 - 1. Ch.

Pr. - 1. Ch.

Cl. 1 - 2. Ch.

Cl. 2 - 2. Ch.

Pr. - 2. Ch.

Timp.

19

Cl. - Solo

Cl. 1 - 1. Ch.

Cl. 2 - 1. Ch.

Pr. - 1. Ch.

Cl. 1 - 2. Ch.

Cl. 2 - 2. Ch.

Pr. - 2. Ch.

Timp.

22

Cl. - Solo

Cl. 1 - 1. Ch.

Cl. 2 - 1. Ch.

Pr. - 1. Ch.

Cl. 1 - 2. Ch.

Cl. 2 - 2. Ch.

Pr. - 2. Ch.

Timp.

25

Cl. - Solo

Cl. 1 - 1. Ch.

Cl. 2 - 1. Ch.

Pr. - 1. Ch.

Cl. 1 - 2. Ch.

Cl. 2 - 2. Ch.

Pr. - 2. Ch.

Timp.

f

f

f

28

Cl. - Solo

Cl. 1 - 1. Ch.

Cl. 2 - 1. Ch.

Pr. - 1. Ch.

Cl. 1 - 2. Ch.

Cl. 2 - 2. Ch.

Pr. - 2. Ch.

Timp.

Solo

f

mf

mf

mf

p

31

Cl. - Solo

Cl. 1 - 1. Ch.

Cl. 2 - 1. Ch.

Pr. - 1. Ch.

Cl. 1 - 2. Ch.

Cl. 2 - 2. Ch.

Pr. - 2. Ch.

Timp.

pp

Detailed description: This block contains the musical notation for measures 31, 32, and 33. The score is for a concert band with seven trumpets and two percussionists. The Solo Clarinet part (Cl. - Solo) has a melodic line with eighth and sixteenth notes. The first clarinets (Cl. 1 - 1. Ch. and Cl. 2 - 1. Ch.) play a similar melodic line. The first percussionist (Pr. - 1. Ch.) plays a rhythmic pattern of eighth notes. The second clarinets (Cl. 1 - 2. Ch. and Cl. 2 - 2. Ch.) and the second percussionist (Pr. - 2. Ch.) are silent. The timpani (Timp.) part has a simple rhythmic pattern. The dynamic marking *pp* (pianissimo) is indicated at the end of measure 33.

34

Cl. - Solo

Cl. 1 - 1. Ch.

Cl. 2 - 1. Ch.

Pr. - 1. Ch.

Cl. 1 - 2. Ch.

Cl. 2 - 2. Ch.

Pr. - 2. Ch.

Timp.

mf

mf

Detailed description: This block contains the musical notation for measures 34, 35, and 36. The Solo Clarinet (Cl. - Solo) is silent. The first clarinets (Cl. 1 - 1. Ch. and Cl. 2 - 1. Ch.) play a melodic line. The first percussionist (Pr. - 1. Ch.) is silent. The second clarinets (Cl. 1 - 2. Ch. and Cl. 2 - 2. Ch.) play a rhythmic pattern. The second percussionist (Pr. - 2. Ch.) is silent. The timpani (Timp.) part has a simple rhythmic pattern. The dynamic marking *mf* (mezzo-forte) is indicated in both the second and third clarinet parts.

37 *Adagio* *f* *Tempo primo*

Cl. - Solo

Cl. 1 - 1. Ch.

Cl. 2 - 1. Ch.

Pr. - 1. Ch.

Cl. 1 - 2. Ch.

Cl. 2 - 2. Ch.

Pr. - 2. Ch.

Timp.

mf *f*

40

Cl. - Solo

Cl. 1 - 1. Ch.

Cl. 2 - 1. Ch.

Pr. - 1. Ch.

Cl. 1 - 2. Ch.

Cl. 2 - 2. Ch.

Pr. - 2. Ch.

Timp.

Tutti

44

Cl. - Solo

Cl. 1 - 1. Ch.

Cl. 2 - 1. Ch.

Pr. - 1. Ch.

Cl. 1 - 2. Ch.

Cl. 2 - 2. Ch.

Pr. - 2. Ch.

Timp.

ff

ff

ff

f

Detailed description: This block contains the musical notation for measures 44, 45, and 46. The score is for a concert band. The Solo Clarinet part (Cl. - Solo) begins in measure 44 with a half rest, followed by a half note G4, a quarter note F4, a quarter note E4, a quarter note D4, a quarter note C4, and a quarter note B3. In measure 45, it has a half rest, followed by a half note B3, a quarter note A3, a quarter note G3, a quarter note F3, and a quarter note E3. In measure 46, it has a half rest, followed by a half note D3, a quarter rest, and a whole rest. The Clarinet 1 parts (Cl. 1 - 1. Ch. and Cl. 1 - 2. Ch.) and Percussion 1 (Pr. - 1. Ch.) enter in measure 46 with a forte fortissimo (*ff*) dynamic. The Clarinet 2 parts (Cl. 2 - 1. Ch. and Cl. 2 - 2. Ch.) and Percussion 2 (Pr. - 2. Ch.) also enter in measure 46 with a forte fortissimo (*ff*) dynamic. The Timpani (Timp.) part enters in measure 46 with a forte (*f*) dynamic. The percussion parts play a rhythmic pattern of eighth notes.

47

Cl. - Solo

Cl. 1 - 1. Ch.

Cl. 2 - 1. Ch.

Pr. - 1. Ch.

Cl. 1 - 2. Ch.

Cl. 2 - 2. Ch.

Pr. - 2. Ch.

Timp.

ff

Detailed description: This block contains the musical notation for measures 47, 48, and 49. The Solo Clarinet part (Cl. - Solo) has a half rest in measure 47, a half rest in measure 48, and then a half note G4 in measure 49, followed by a whole note G4. The Clarinet 1 parts (Cl. 1 - 1. Ch. and Cl. 1 - 2. Ch.) and Percussion 1 (Pr. - 1. Ch.) play a rhythmic pattern of eighth notes in measure 47, followed by a half note G4 in measure 48, and then a rhythmic pattern of eighth notes in measure 49. The Clarinet 2 parts (Cl. 2 - 1. Ch. and Cl. 2 - 2. Ch.) and Percussion 2 (Pr. - 2. Ch.) play a rhythmic pattern of eighth notes in measure 47, followed by a half note G4 in measure 48, and then a rhythmic pattern of eighth notes in measure 49. The Timpani (Timp.) part plays a rhythmic pattern of eighth notes in measure 47, followed by a half note G4 in measure 48, and then a rhythmic pattern of eighth notes in measure 49. The Solo Clarinet part has a forte fortissimo (*ff*) dynamic in measure 49.

50

Cl. - Solo

Cl. 1 - 1. Ch.

Cl. 2 - 1. Ch.

Pr. - 1. Ch.

Cl. 1 - 2. Ch.

Cl. 2 - 2. Ch.

Pr. - 2. Ch.

Timp.

53 *Andante*

Cl. - Solo

Cl. 1 - 1. Ch.

Cl. 2 - 1. Ch.

Pr. - 1. Ch.

Cl. 1 - 2. Ch.

Cl. 2 - 2. Ch.

Pr. - 2. Ch.

Timp.

mf

tr

p

57

Cl. - Solo

Cl. 1 - 1. Ch.

Cl. 2 - 1. Ch.

Pr. - 1. Ch.

Cl. 1 - 2. Ch.

Cl. 2 - 2. Ch.

Pr. - 2. Ch.

Timp.

60

Cl. - Solo

Cl. 1 - 1. Ch.

Cl. 2 - 1. Ch.

Pr. - 1. Ch.

Cl. 1 - 2. Ch.

Cl. 2 - 2. Ch.

Pr. - 2. Ch.

Timp.

64

Cl. - Solo

Cl. 1 - 1. Ch.

Cl. 2 - 1. Ch.

Pr. - 1. Ch.

Cl. 1 - 2. Ch.

Cl. 2 - 2. Ch.

Pr. - 2. Ch.

Timp.

p

p

68

Cl. - Solo

Cl. 1 - 1. Ch.

Cl. 2 - 1. Ch.

Pr. - 1. Ch.

Cl. 1 - 2. Ch.

Cl. 2 - 2. Ch.

Pr. - 2. Ch.

Timp.

p

71

Cl. - Solo

Cl. 1 - 1. Ch.

Cl. 2 - 1. Ch.

Pr. - 1. Ch.

Cl. 1 - 2. Ch.

Cl. 2 - 2. Ch.

Pr. - 2. Ch.

Timp.

p

p

p

Detailed description: This system contains measures 71, 72, and 73. The Cl. - Solo part is silent. The Cl. 1 - 1. Ch. part plays a dotted quarter note followed by an eighth note. The Cl. 2 - 1. Ch. part plays a sixteenth-note triplet. The Pr. - 1. Ch. part plays a dotted quarter note. The Cl. 1 - 2. Ch. part is silent until measure 73, where it plays a dotted quarter note. The Cl. 2 - 2. Ch. part is silent until measure 73, where it plays a sixteenth-note triplet. The Pr. - 2. Ch. part is silent until measure 73, where it plays a dotted half note. The Timp. part plays a steady quarter-note pulse.

74

Cl. - Solo

Cl. 1 - 1. Ch.

Cl. 2 - 1. Ch.

Pr. - 1. Ch.

Cl. 1 - 2. Ch.

Cl. 2 - 2. Ch.

Pr. - 2. Ch.

Timp.

mf

mf

mf

mf

mf

mf

mf

mf

mf

Detailed description: This system contains measures 74, 75, and 76. The Cl. - Solo part is silent. The Cl. 1 - 1. Ch. part plays a dotted quarter note followed by an eighth note. The Cl. 2 - 1. Ch. part plays a dotted quarter note. The Pr. - 1. Ch. part plays a dotted quarter note followed by an eighth note. The Cl. 1 - 2. Ch. part plays a dotted quarter note followed by an eighth note. The Cl. 2 - 2. Ch. part plays a sixteenth-note triplet. The Pr. - 2. Ch. part plays a dotted quarter note followed by an eighth note. The Timp. part plays a dotted quarter note followed by an eighth note. The dynamic marking *mf* is present in each part.

77 **Vivace**

Cl. - Solo

Cl. 1 - 1. Ch. *f*

Cl. 2 - 1. Ch. *f*

Pr. - 1. Ch. *f*

Cl. 1 - 2. Ch.

Cl. 2 - 2. Ch.

Pr. - 2. Ch.

Timp. *f*

82 **Solo**

Cl. - Solo *f*

Cl. 1 - 1. Ch. *mf*

Cl. 2 - 1. Ch. *mf*

Pr. - 1. Ch.

Cl. 1 - 2. Ch.

Cl. 2 - 2. Ch.

Pr. - 2. Ch.

Timp.

87

Cl. - Solo

Cl. 1 - 1. Ch.

Cl. 2 - 1. Ch.

Pr. - 1. Ch.

Cl. 1 - 2. Ch.

Cl. 2 - 2. Ch.

Pr. - 2. Ch.

Timp.

mf

92

Cl. - Solo

Cl. 1 - 1. Ch.

Cl. 2 - 1. Ch.

Pr. - 1. Ch.

Cl. 1 - 2. Ch.

Cl. 2 - 2. Ch.

Pr. - 2. Ch.

Timp.

f

97

Cl. - Solo

Cl. 1 - 1. Ch.

Cl. 2 - 1. Ch.

Pr. - 1. Ch.

Cl. 1 - 2. Ch.

Cl. 2 - 2. Ch.

Pr. - 2. Ch.

Timp.

f

f

f

mf

Detailed description: This block contains the musical score for measures 97 through 102. It features eight staves: Cl. - Solo, Cl. 1 - 1. Ch., Cl. 2 - 1. Ch., Pr. - 1. Ch., Cl. 1 - 2. Ch., Cl. 2 - 2. Ch., Pr. - 2. Ch., and Timp. The Cl. - Solo part has a melodic line with slurs and accents. The Cl. 1 - 1. Ch. part has a rhythmic pattern. The Cl. 2 - 1. Ch. part has a simple melodic line. The Pr. - 1. Ch. part is mostly silent. The Cl. 1 - 2. Ch. part has a melodic line starting in measure 100. The Cl. 2 - 2. Ch. part has a melodic line starting in measure 100. The Pr. - 2. Ch. part has a melodic line starting in measure 100. The Timp. part has a melodic line starting in measure 100. Dynamics include *f* and *mf*.

103

Cl. - Solo

Cl. 1 - 1. Ch.

Cl. 2 - 1. Ch.

Pr. - 1. Ch.

Cl. 1 - 2. Ch.

Cl. 2 - 2. Ch.

Pr. - 2. Ch.

Timp.

Detailed description: This block contains the musical score for measures 103 through 108. It features the same eight staves as the previous block. The Cl. - Solo part is silent. The Cl. 1 - 1. Ch. part has a melodic line starting in measure 103. The Cl. 2 - 1. Ch. part has a melodic line starting in measure 103. The Pr. - 1. Ch. part has a melodic line starting in measure 103. The Cl. 1 - 2. Ch. part has a melodic line starting in measure 103. The Cl. 2 - 2. Ch. part has a melodic line starting in measure 103. The Pr. - 2. Ch. part has a melodic line starting in measure 103. The Timp. part has a melodic line starting in measure 103.

109

Cl. - Solo

Cl. 1 - 1. Ch.

Cl. 2 - 1. Ch.

Pr. - 1. Ch.

Cl. 1 - 2. Ch.

Cl. 2 - 2. Ch.

Pr. - 2. Ch.

Timp.

113

Cl. - Solo

Cl. 1 - 1. Ch.

Cl. 2 - 1. Ch.

Pr. - 1. Ch.

Cl. 1 - 2. Ch.

Cl. 2 - 2. Ch.

Pr. - 2. Ch.

Timp.

117

Cl. - Solo *f*

Cl. 1 - 1. Ch.

Cl. 2 - 1. Ch.

Pr. - 1. Ch.

Cl. 1 - 2. Ch.

Cl. 2 - 2. Ch.

Pr. - 2. Ch.

Timp.

121

Cl. - Solo *ff* **Tutti**

Cl. 1 - 1. Ch. *ff*

Cl. 2 - 1. Ch. *ff*

Pr. - 1. Ch. *ff*

Cl. 1 - 2. Ch. *ff*

Cl. 2 - 2. Ch. *ff*

Pr. - 2. Ch. *ff*

Timp. *ff*

126

Cl. - Solo

Cl. 1 - 1. Ch.

Cl. 2 - 1. Ch.

Pr. - 1. Ch.

Cl. 1 - 2. Ch.

Cl. 2 - 2. Ch.

Pr. - 2. Ch.

Timp.

Clarino - Solo

11 Allegro Solo *f*

13

15

17

28

Solo *f*

31

37

Adagio *f* Tempo primo

40

44

Tutti

47

ff

50

Cl. - Solo

53 Andante - tacet

24

Seite - 2 - Concerto à 7 Trompeten und Pauken von Joh. - Ernst Altenburg

Clarino - Solo

77 Vivace Solo *f*

87

92

97 15

117 *f*

121 Tutti *ff*

126

Clarino 1 - 1. Chor

Allegro

f

4

7

6

mf

16

23

f

25

3

29

mf

31

34

37 Adagio

f

Tempo primo

40

44

Tutti

ff

47

50

Clarino 1 - 1. Chor

53 Andante

60

68 *p*

71

74 *mf*

Clarino 1 - 1. Chor

77 Vivace

82 *mf*

87

92

97 *f*

103

113

117

121 **Tutti** *ff*

126

Allegro

Clarinete 2 - 1. Chor

Seite - 2 - Concerto à 7 Trompeten und Pauken von Joh. - Ernst Altenburg

Clarino 2 - 1. Chor

53 *Andante* *tr* *mf* 3

60 3 *p*

68

71

74 *mf*

77 *Vivace* *f*

82 *mf*

87

94 *f*

102 4

112

116

120 *Tutti* *ff*

125

Prinzpal-Chor 1

Allegro
f

4

7 *mf*

16 *f*

25 3

29 *mf*

31 4

37 **Adagio** *f* **Tempo primo**

40

44 **Tutti** *ff*

47

Detailed description: The score is for the first principal trumpet part. It begins with a treble clef, a common time signature (C), and the tempo marking 'Allegro'. The first measure starts with a forte (*f*) dynamic. The music consists of several lines of eighth and sixteenth notes, with some rests. Measure numbers 4, 7, 16, 25, 29, 31, 37, 40, 44, and 47 are indicated in boxes at the start of their respective lines. At measure 7, the dynamic changes to mezzo-forte (*mf*). At measure 16, it returns to forte (*f*). At measure 37, the tempo changes to 'Adagio' and the dynamic to forte (*f*). At measure 44, the tempo changes to 'Tempo primo' and the dynamic to fortissimo (*ff*), with the marking 'Tutti' above the staff. The score ends at measure 47.

Prinzpal-Chor 1 50



53 Andante
mf



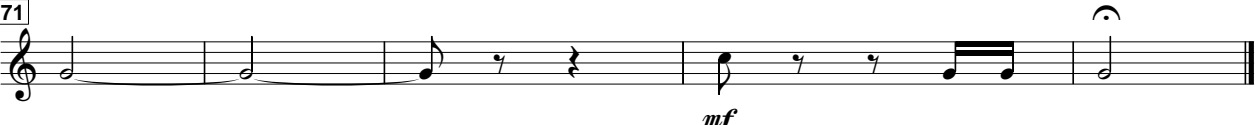
57



64
p



71
mf



77 Vivace
f



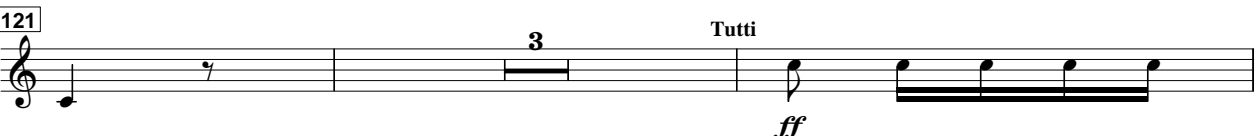
82 20



108 9



121 3 Tutti
ff



126



Clarino 1 - 2. Chor

Allegro 6 *f*

10

13 *mf*

21 3

26 *f*

29 *mf*

37 Adagio 9 **Tutti** Tempo primo *ff*

47

50

53 Andante 4 *mf*

Clarino 1 - 2. Chor

60 *p*

64 6

73 *p* *mf*

77 *Vivace* *f* 24

103

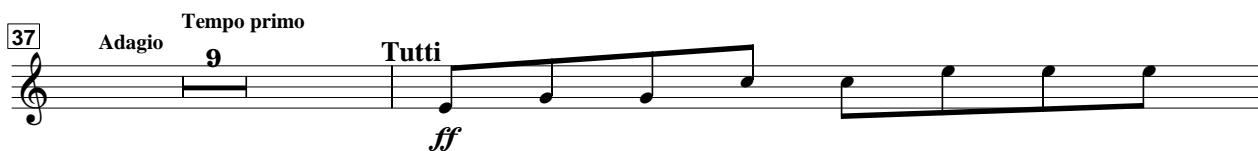
109 12

125 *Tutti* *ff*

Detailed description: This page contains the musical score for the Clarino 1 - 2. Chor part of the Concerto à 7 Trompeten und Pauken by Johann Ernst Altenburg. The score is written in treble clef and consists of seven systems of music. The first system (measures 60-63) begins with a dynamic marking of *p*. The second system (measures 64-67) includes a first ending bracket labeled '6'. The third system (measures 73-76) starts with a dynamic marking of *p* and ends with *mf*. The fourth system (measures 77-80) is marked *Vivace* and *f*, with a first ending bracket labeled '24'. The fifth system (measures 103-106) contains rests. The sixth system (measures 109-112) includes a first ending bracket labeled '12'. The seventh system (measures 125-128) is marked *Tutti* and *ff*.

Allegro

Clarino 2 - 2. Chor



Clarino 2 - 2. Chor

53 Andante 4

mf

60

p

64

68 5

p

74

mf

77 Vivace 24

f

105 4

115 Tutti

ff

126

Prinzipal - 2. Chor

Allegro

6

f

10

13

10

f

25

f

28

17

Tutti

ff

47

50

53

Andante

4

mf

60

p

64

6

73

p

mf

77

Vivace

24

8

f

113

7

Tutti

ff

126

Allegro

Timpani in C - G 

4

f



7



10



13

10

f



25



28

p



31

pp



37 Adagio

Tempo primo

mf

f



40



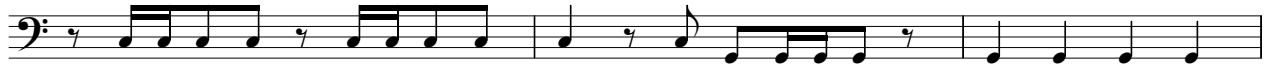
44

Tutti

f



47

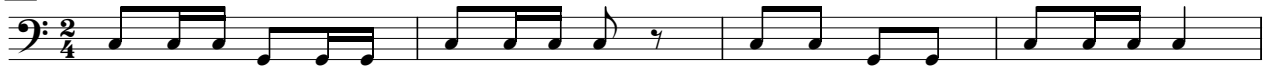


50



53 Andante

p



57



60

Timpani in C - G



64



68



p

73



mf

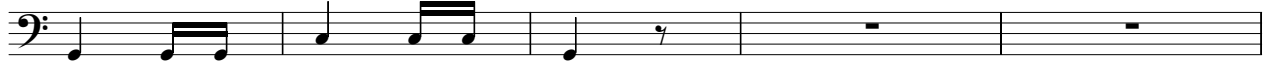
77

Vivace



f

82

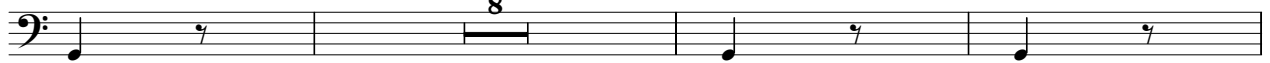


87



mf

92



8

mf

103

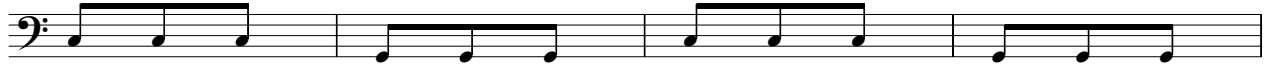


109

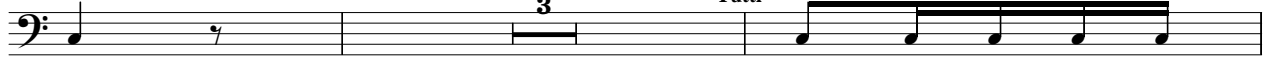


3

117



121



Tutti

ff

126

