

Sugar Blues

 9/10

Words: Lucy Fletcher
Music: Williams Clarence

$\text{♩} = 92$ $\text{♩} = \text{♩}$ $\text{♩} = \text{♩}$

MUTED WAU-WAU

D **A**

D

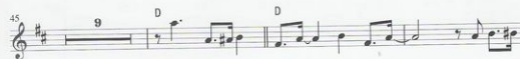
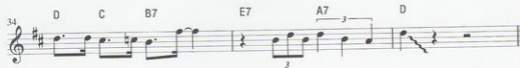
D7

G B Em G G#° D B7 Em7 A7

D C B7 E7 A7 D D

A

D



67 G G#° D B7 Em7 A7

70 D C B7 E7 A7³ D D

74 A³

78 D

81 D7 G B Em

85 G G#° D B7 Em7 A7

88 D C B7 E7 A7³ D A7 D

92 E^b₃ D

rit.

Detailed description of the musical score: The score is written for guitar in G major (one sharp). It consists of eight staves of music. The first staff (measures 67-70) starts with a G chord, followed by G#° (F# natural), D, B7, Em7, and A7. The second staff (measures 70-73) includes D, C, B7, E7, a triplet of A7, D, and another D. The third staff (measures 73-77) features a triplet of A, followed by a triplet of D, and then a quarter note D. The fourth staff (measures 77-80) begins with a D chord and contains a triplet of eighth notes. The fifth staff (measures 80-84) has a D7 chord, a triplet of eighth notes, and then G, B, and Em chords. The sixth staff (measures 84-87) starts with G, G#°, D, B7, Em7, and A7. The seventh staff (measures 87-91) includes D, C, B7, E7, a triplet of A7, D, A7, and D. The eighth staff (measures 91-92) features a triplet of E^b (D natural) and a D chord, ending with a ritardando marking.