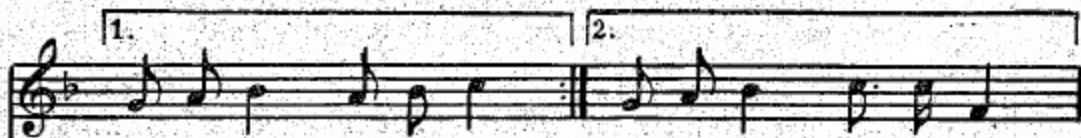


ДОРОЖКА

В темпе марша



Мы с ло_па_та_ми ша_га_ем,
Дру_ж_но пе_с_ни рас_пе_ва_ем



1. пос_мо_три! пос_мо_три! 2. Раз, два, три! Раз, два, три!





За ра-бо-ту, за ра-бо-ту все друж-ней! Все друж-ней!
Бу-дет спорить-ся ра-бо-та. Ве-се-лей! ве-се-лей!

The second and third staves of music are written on a grand staff, consisting of a treble clef staff on top and a bass clef staff on the bottom. The key signature remains one flat. The second staff contains the vocal melody, which includes some chromatic movement and a sharp sign (F#) in the middle. The third staff contains the piano accompaniment, primarily using block chords and simple rhythmic patterns. A brace on the left side groups both staves together.