

БУРЕГА В.М.
НОТНАЯ БИБЛИОТЕКА
СУМЫ Т.242-787

Handwritten musical score for the left page, featuring ten staves of music in G major and 2/4 time. The score includes various rhythmic patterns, dynamics like 'f' and 'p', and first/second endings.

Handwritten musical score for the right page, featuring four staves of music in G major and 2/4 time. The score includes various rhythmic patterns and first/second endings.

БУРЕГА В.М.
 НОТНАЯ БИБЛИОТЕКА
 СУМЫ Т.242-787

Handwritten musical score for the first page, featuring a treble clef, a key signature of one sharp (F#), and a 2/4 time signature. The score consists of ten staves of music. It begins with a double bar line and a fortissimo (ff) dynamic marking. The notation includes various note values, rests, and slurs. There are two first endings (marked '1.') and a second ending (marked '2.'). The piece concludes with a '2. Fine' marking.

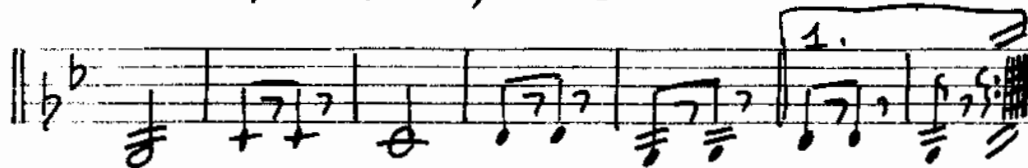
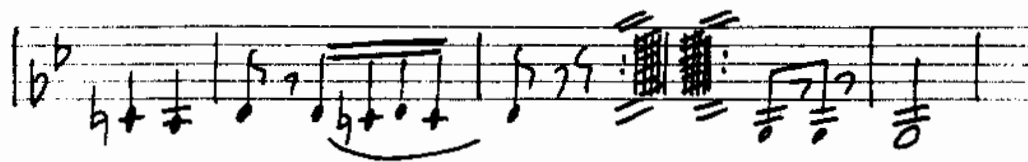
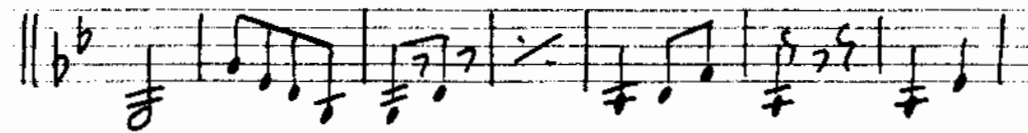
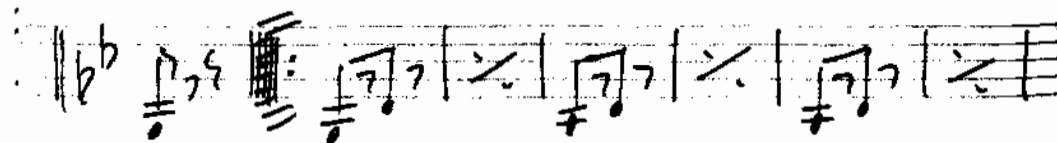
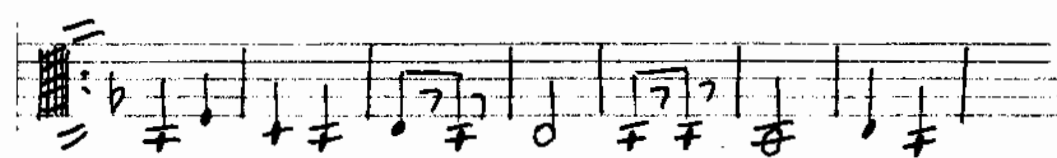
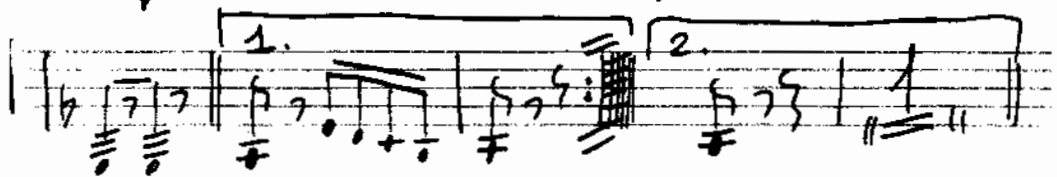
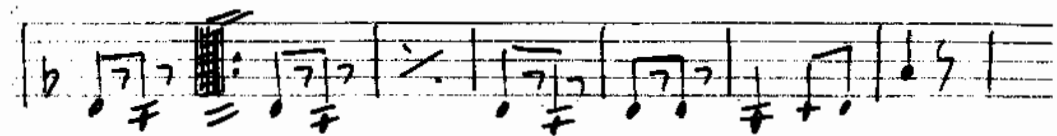
Handwritten musical score for the second page, continuing from the first page. It features a treble clef, a key signature of one sharp (F#), and a 2/4 time signature. The score consists of seven staves of music. It begins with a double bar line and a piano (p) dynamic marking. The notation includes various note values, rests, and slurs. There are two first endings (marked '1.') and a second ending (marked '2.').

БУРЕГА В.М.
НОТНАЯ БИБЛИОТЕКА
СУМЫ Т.242=787

Handwritten musical score for the left page. It consists of eight staves of music. The first staff begins with a treble clef, a 2/4 time signature, and a key signature of one flat (Bb). The music includes various rhythmic values, chords, and dynamics such as *fz* and *f*. There are repeat signs with first and second endings. The piece concludes with a double bar line and the word "Fine".

Handwritten musical score for the right page, continuing the piece. It consists of four staves of music. The notation is consistent with the left page, including a key signature of one flat and various musical symbols. The piece ends with a double bar line.

БУРЕГА В.М.
 НОТНАЯ БИБЛИОТЕКА
 СУМЫ Т.242-787



БУРЕГА В.М.
НОТНАЯ БИБЛИОТЕКА
СУМЫ Т.242-787

Handwritten musical score on the left page, featuring a treble clef, a key signature of one sharp (F#), and a 2/4 time signature. The score consists of ten staves of music. The notation includes various rhythmic values, accidentals, and dynamic markings. A double bar line with repeat dots is present at the end of the first staff. A first ending bracket labeled '1.' spans the final two staves, leading to a double bar line with repeat dots. A second ending bracket labeled '2. Fine' spans the final two staves, ending with a double bar line and repeat dots. The word 'Fine' is written at the beginning of the final staff.

Handwritten musical score on the right page, continuing the piece. It features a treble clef, a key signature of one sharp (F#), and a 2/4 time signature. The score consists of ten staves of music. The notation includes various rhythmic values, accidentals, and dynamic markings. A double bar line with repeat dots is present at the end of the first staff. A first ending bracket labeled '1.' spans the final two staves, leading to a double bar line with repeat dots. A second ending bracket labeled '2.' spans the final two staves, ending with a double bar line and repeat dots.

Handwritten musical score on the left page, featuring ten staves of music in G major and 2/4 time. The notation includes treble clef, key signature of one sharp (F#), and dynamic markings such as "ff" and "f". The score contains various rhythmic patterns, including eighth and sixteenth notes, and rests. There are first and second endings marked with "1." and "2." in several places. The piece concludes with a "Fine" marking and a double bar line.

Handwritten musical score on the right page, featuring four staves of music in G major and 2/4 time. The notation includes treble clef, key signature of one sharp (F#), and dynamic markings such as "ff" and "f". The score contains various rhythmic patterns, including eighth and sixteenth notes, and rests. There are first and second endings marked with "1." and "2." in several places. The piece concludes with a double bar line.

БУРЕГА В.М.
ПОТНАЯ БИБЛИОТЕКА
СУМЬ 1.242-787

Handwritten musical score for the first system, consisting of eight staves. The music is in G major (one sharp) and 2/4 time. It begins with a treble clef and a dynamic marking of *ff*. The first staff contains a whole rest followed by a melodic line starting on G4. The second staff has a dynamic marking of *mf* and includes a 7-measure rest. The third staff continues the melodic line. The fourth staff features a first ending bracketed with '1.' and a second ending bracketed with '2.', both marked with a '+' sign. The fifth staff continues the melodic line with some 7-measure rests. The sixth staff continues the melodic line. The seventh staff has a first ending bracketed with '1.' and a second ending bracketed with '2. Fine', with a dynamic marking of *ff*. The eighth staff concludes the system with a melodic line.

Handwritten musical score for the second system, consisting of seven staves. The music continues from the first system. The first staff continues the melodic line. The second staff continues the melodic line. The third staff features a first ending bracketed with '1.' and a second ending bracketed with '2.', with a dynamic marking of *f*. The fourth staff continues the melodic line with a dynamic marking of *p*. The fifth staff continues the melodic line with a dynamic marking of *f*. The sixth staff continues the melodic line. The seventh staff features a first ending bracketed with '1.' and a second ending bracketed with '2.', concluding the system with a double bar line and repeat sign.



Корнет 2 Марш Г. Рейндер

ff

1. 2.

7 7

7 7 7 7

1. 2. Fine trich

ff p

f

1. 2.

1. 2.

БУРЕГА В.М.
НОТНАЯ БИБЛИОТЕКА
СУМЫ Т.242-787

Handwritten musical score on the left page, featuring ten staves of music in treble clef with a key signature of one sharp (F#) and a 2/4 time signature. The notation includes various rhythmic values, accidentals, and dynamic markings such as *ff* and *p*. First and second endings are clearly marked with "1." and "2." above the staves. The piece concludes with a "Fine" marking and a double bar line.

Handwritten musical score on the right page, continuing the piece from the left page. It consists of five staves of music in treble clef with a key signature of one sharp (F#) and a 2/4 time signature. The notation includes various rhythmic values, accidentals, and dynamic markings. First and second endings are marked with "1." and "2." above the staves. The piece concludes with a double bar line.

БУРЕГА В.М.
НОТНАЯ БИБЛИОТЕКА
СУМЫ Т.242-787

Handwritten musical score for the first system, consisting of eight staves. It begins with a treble clef, a key signature of one sharp (F#), and a 2/4 time signature. The first staff has a dynamic marking of *ff* and a fermata. The second staff has a dynamic marking of *mf*. The fourth staff contains first and second endings. The seventh staff also contains first and second endings, with the second ending labeled "2. Fine". The eighth staff starts with a dynamic marking of *ff* and ends with a fermata and a *p* dynamic marking.

Handwritten musical score for the second system, consisting of six staves. It continues the melody from the first system. The fourth staff has a dynamic marking of *f*. The sixth staff contains first and second endings.

БУРЕГА В.И.
 НОТНАЯ БИБЛИОТЕКА
 С.УМЫ Т.242-787

Handwritten musical notation on a single staff. It begins with a treble clef, a key signature of one flat (B-flat), and a time signature of 2/4. The notation includes a series of notes and rests, with some notes beamed together. A double bar line is present, followed by a repeat sign.

Handwritten musical notation on a single staff, continuing from the previous staff. It features a series of notes and rests, with some notes beamed together. A double bar line is present, followed by a repeat sign.

Handwritten musical notation on a single staff, continuing from the previous staff. It features a series of notes and rests, with some notes beamed together. A double bar line is present, followed by a repeat sign.

Handwritten musical notation on a single staff, continuing from the previous staff. It features a series of notes and rests, with some notes beamed together. A double bar line is present, followed by a repeat sign.

Handwritten musical notation on a single staff, continuing from the previous staff. It features a series of notes and rests, with some notes beamed together. A double bar line is present, followed by a repeat sign.

Handwritten musical notation on a single staff, continuing from the previous staff. It features a series of notes and rests, with some notes beamed together. A double bar line is present, followed by a repeat sign.

Handwritten musical notation on a single staff, continuing from the previous staff. It features a series of notes and rests, with some notes beamed together. A double bar line is present, followed by a repeat sign.

Handwritten musical notation on a single staff, continuing from the previous staff. It features a series of notes and rests, with some notes beamed together. A double bar line is present, followed by a repeat sign. Below the staff, there are some handwritten symbols, including a plus sign and a less-than sign.

Handwritten musical notation on a single staff. It begins with a treble clef, a key signature of one flat (B-flat), and a time signature of 2/4. The notation includes a series of notes and rests, with some notes beamed together. A double bar line is present, followed by a repeat sign.

Handwritten musical notation on a single staff, continuing from the previous staff. It features a series of notes and rests, with some notes beamed together. A double bar line is present, followed by a repeat sign.

Handwritten musical notation on a single staff, continuing from the previous staff. It features a series of notes and rests, with some notes beamed together. A double bar line is present, followed by a repeat sign.

Handwritten musical notation on a single staff, continuing from the previous staff. It features a series of notes and rests, with some notes beamed together. A double bar line is present, followed by a repeat sign.

Handwritten musical notation on a single staff, continuing from the previous staff. It features a series of notes and rests, with some notes beamed together. A double bar line is present, followed by a repeat sign.

БУРЕГА В.М.
НОТНАЯ БИБЛИОТЕКА
СУМЫ Т.242-787

Handwritten musical score for the left page, featuring a treble clef, a key signature of one sharp (F#), and a 2/4 time signature. The music consists of eight staves with various rhythmic patterns, including eighth and sixteenth notes, and rests. Dynamics include 'ff' (fortissimo) and 'p' (piano). There are first and second endings marked with '1.' and '2.'. The piece concludes with a 'FINE' marking and a 'ff' dynamic.

Handwritten musical score for the right page, continuing the piece. It features a treble clef, a key signature of one sharp (F#), and a 2/4 time signature. The music consists of eight staves with various rhythmic patterns, including eighth and sixteenth notes, and rests. Dynamics include 'f' (forte), 'p' (piano), and 'ff' (fortissimo). There are first and second endings marked with '1.' and '2.'. The piece concludes with a double bar line.

БУРЕГА В.М.
 ПОТНАЯ БИБЛИОТЕКА
 СУМЫ Т.242-787

Handwritten musical score for the flute part of 'Grenadier March'. The score is written on ten staves. It begins with a treble clef, a key signature of one flat (B-flat), and a 2/4 time signature. The music features a variety of rhythmic patterns, including eighth and sixteenth notes, and rests. There are several dynamic markings, such as 'ff' (fortissimo) and 'f' (forte). The score includes first and second endings, with the second ending labeled '2. FIRE'. The piece concludes with a double bar line.

Handwritten musical score for the piano accompaniment of 'Grenadier March'. The score is written on ten staves. It begins with a bass clef, a key signature of one flat (B-flat), and a 2/4 time signature. The music is characterized by dense chordal textures and rhythmic patterns, often using eighth and sixteenth notes. There are several dynamic markings, including 'ff' (fortissimo) and 'f' (forte). The score includes first and second endings, with the second ending labeled '2.'. The piece concludes with a double bar line.

Музыкальная
 школа № 1
 ул. Ленина, 10
 г. Владивосток
 690000