

Flute

# КРЫМСКИЙ ВАЛЬС

слова Бориса Колесникова

муз. А. Школяр

$\text{♩} = 180$

*f*

1 10 4

*mf*

4 10

3 8 1.2. 3. 2

*f*

# КРЫМСКИЙ ВАЛЬС

слова Бориса Колесникова

муз. А. Школяр

$\text{♩} = 180$

*f*

*f*

1

4 4 *mf*

4 3

2

10

3

8 1.2. 3. 2. *f*

# КРЫМСКИЙ ВАЛЬС

слова Бориса Колесникова

муз. А. Школяр

$\text{♩} = 180$

*f*

1 4 4

*mf*

4 3

2 10

3 8 1.2. 3.2 *f*

# КРЫМСКИЙ ВАЛЬС

слова Бориса Колесникова

муз. А. Школяр

♩ = 180

*f*

1

4

*mf*

4

3

2

9

3

2

1.2.

3.

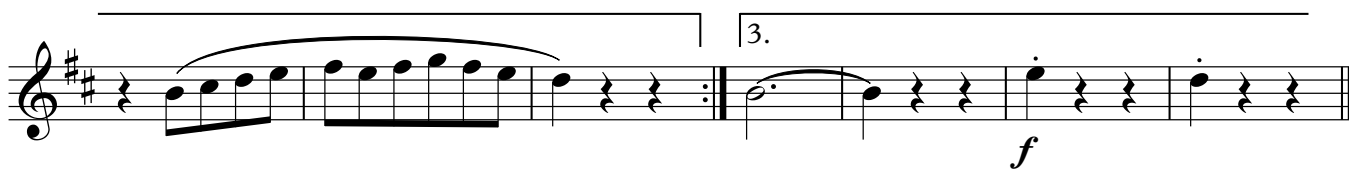
*f*

# КРЫМСКИЙ ВАЛЬС

слова Бориса Колесникова

муз. А. Школяр

♩ = 180



Tenor Saxophone

# КРЫМСКИЙ ВАЛЬС

слова Бориса Колесникова

муз. А. Школяр

$\text{♩} = 180$

*f*

1 21

2 9

3 2 *mf*

1.2. 2 3. *f*

Trumpet in B $\flat$

# КРЫМСКИЙ ВАЛЬС

слова Бориса Колесникова

муз. А. Школяр

$\text{♩} = 180$

*f*

2 1 23

*mf*

2

3

1.2.

2 3.

*f*



Percussion

# КРЫМСКИЙ ВАЛЬС

слова Бориса Колесникова

муз. А. Школяр

♩ = 180



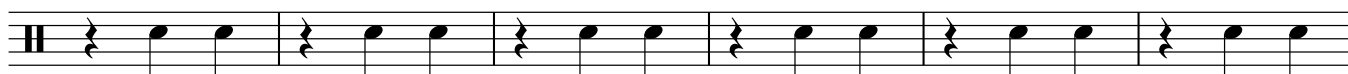
1



*mf*



2



3



1.2.

3.



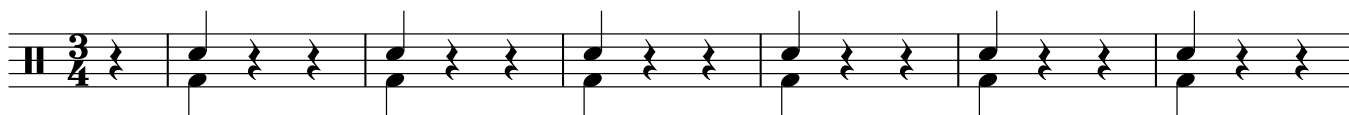
*f*

# КРЫМСКИЙ ВАЛЬС

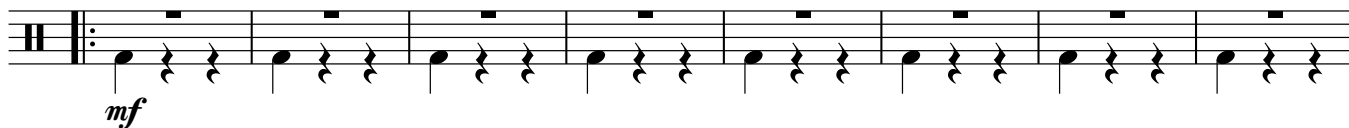
слова Бориса Колесникова

муз. А. Школяр

♩ = 180



1



2



3



# Marching Bass Drum

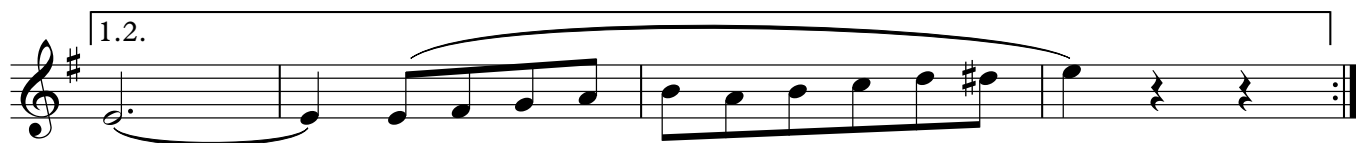
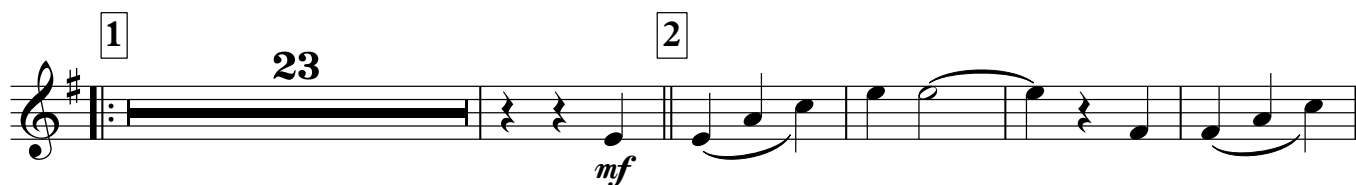
The musical notation is written on a single staff with a treble clef. It consists of two main sections: a first ending and a third ending. The first ending, labeled '1.2.', spans the first four measures and ends with a repeat sign. The third ending, labeled '3.', spans the next four measures and ends with a double bar line. The notation includes quarter notes, eighth notes, and rests. A dynamic marking of *f* (forte) is placed below the first note of the third ending.

# КРЫМСКИЙ ВАЛЬС

слова Бориса Колесникова

муз. А. Школяр

$\text{♩} = 180$



# КРЫМСКИЙ ВАЛЬС

слова Бориса Колесникова

муз. А. Школяр

$\text{♩} = 180$

*f*

2 1 23 *mf*

2

3

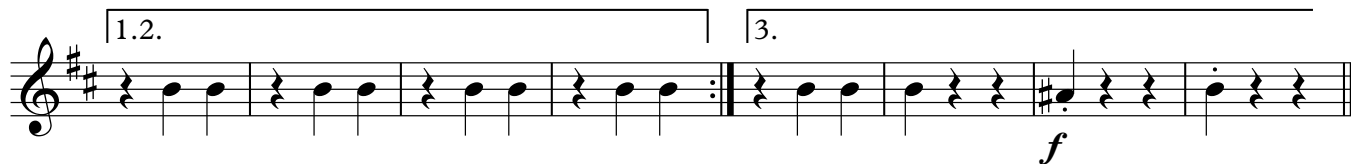
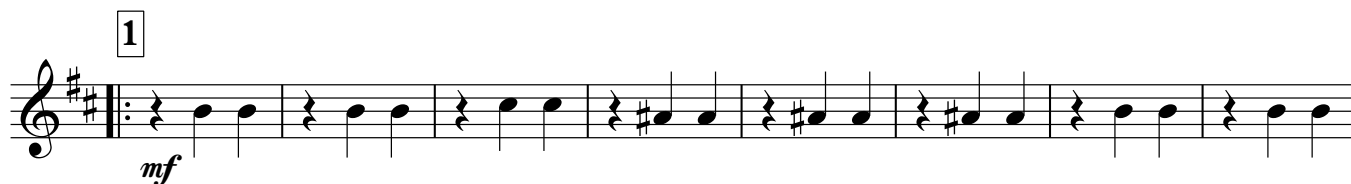
1.2. 2 3. *f*

# КРЫМСКИЙ ВАЛЬС

слова Бориса Колесникова

муз. А. Школяр

♩ = 180

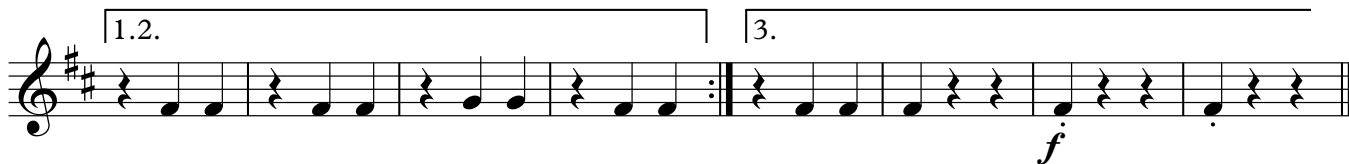
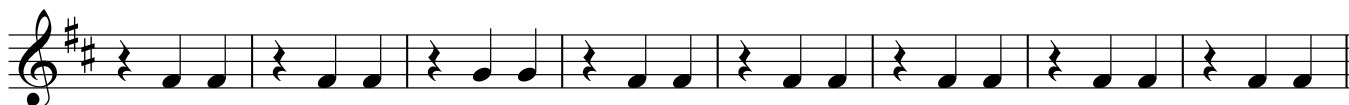
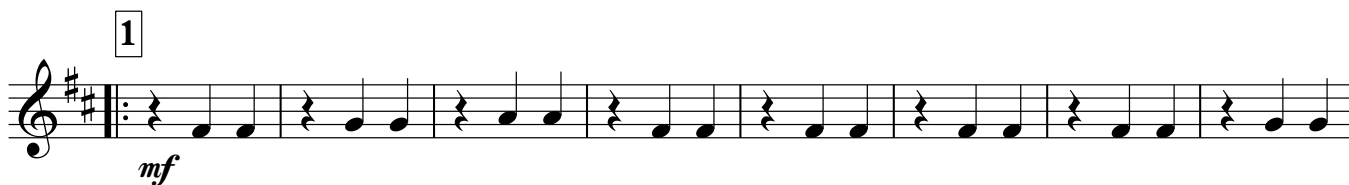
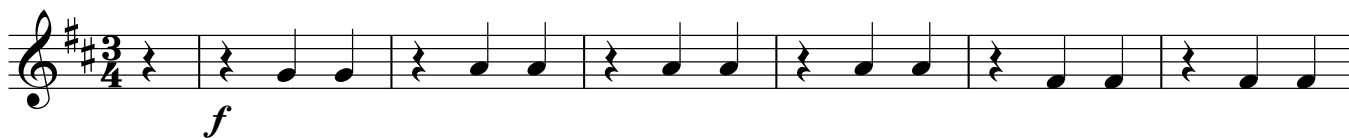


# КРЫМСКИЙ ВАЛЬС

слова Бориса Колесникова

муз. А. Школяр

$\text{♩} = 180$



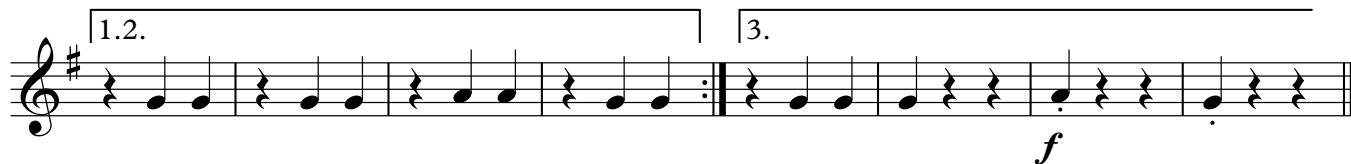
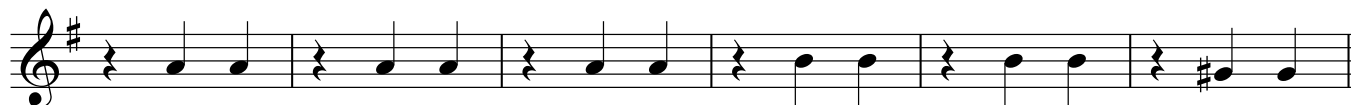
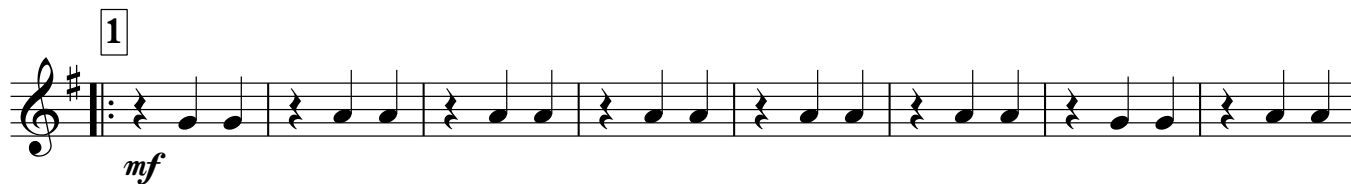


## КРЫМСКИЙ ВАЛЬС

слова Бориса Колесникова

муз. А. Школяр

♩ = 180



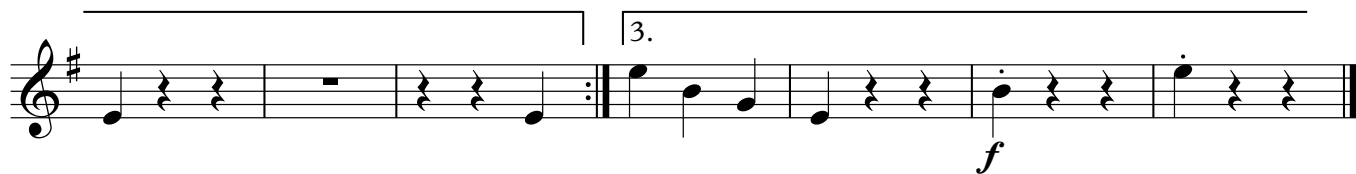
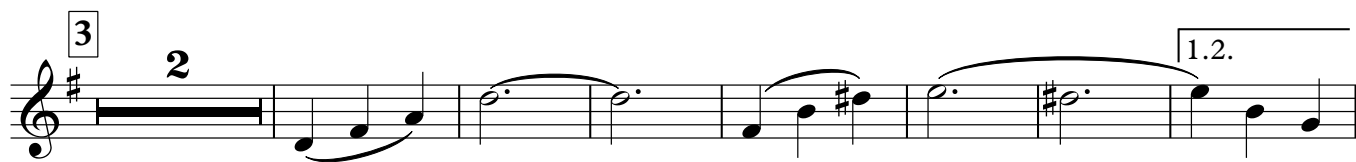
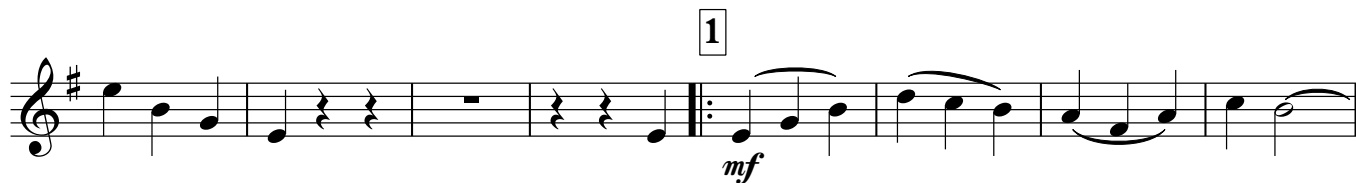
Baritone

# КРЫМСКИЙ ВАЛЬС

слова Бориса Колесникова

муз. А. Школяр

$\text{♩} = 180$



Bass in C

# КРЫМСКИЙ ВАЛЬС

слова Бориса Колесникова

муз. А. Школяр

♩ = 180



1



2



3



1.2.

3.

