

СОНАТА

для скрипки соло

(1976)

Редакция С. Снитковского

А. ЛЕМАН

Con moto

Musical score for Violin Sonata by Semion Isaevich Snitkovsky, Op. 10, No. 1. The score is in G major and 4/4 time. It consists of 11 staves of music. The first staff begins with "Con moto" and includes dynamic markings like *f*, *p*, and *ff*. The second staff has *pizz.* and *arco* markings. The third staff has *mp*, *mf*, and *f* dynamics. The fourth staff has *ff molto cantabile, espressivo*. The fifth staff has *mf*, *ff molto espressivo*, and *sf* dynamics. The sixth staff has *pizz.*, *arco*, and *pizz.* markings. The seventh staff has *pizz.*, *arco*, and *pizz.* markings. The eighth staff has *ten.* marking. The score includes various musical notations such as slurs, accents, and fingering numbers.

V IV $\frac{4}{4}$

ff *espressivo*

marcato

fff

f cresc.

pizz. *arco* *espr.* *ff*

III

c 5085 x

II
 3
 mf
 V IV₃
 mp
 senza sord.
 ff
 f cresc.
 marcato
 espr.
 ff
 II IV III
 1 2 3 4 2 2 2 1 1 3 4
 ff
 cresc.
 ff

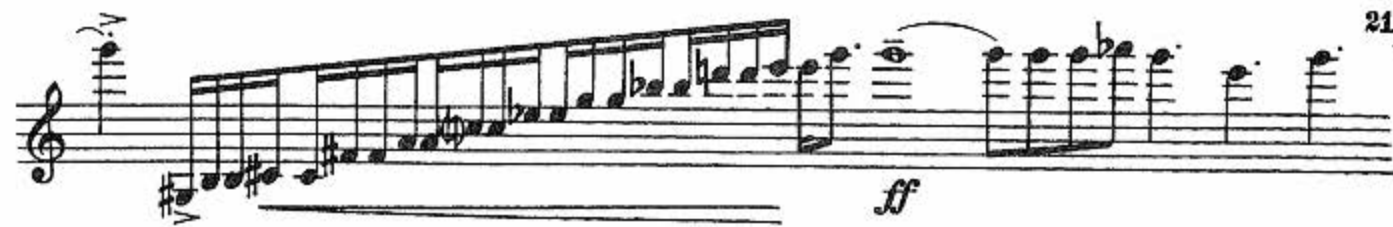
Musical score for guitar, page 20. The score consists of ten staves of music. The key signature is one sharp (F#) and the time signature is 3/4. The music includes various dynamics, articulations, and fingerings.

Dynamics and markings include: *fff*, *pp dolce*, *mp*, *f*, *mf*, *pp*, *ff molto cantabile*, and *f*.

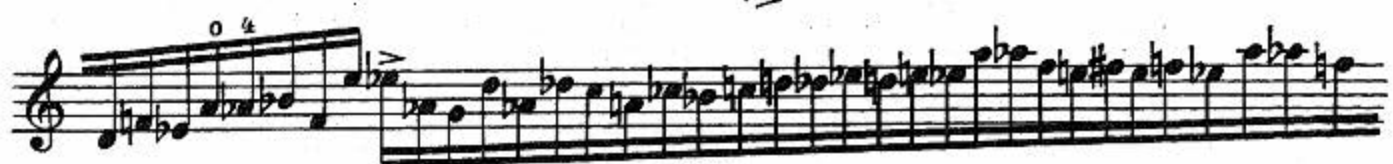
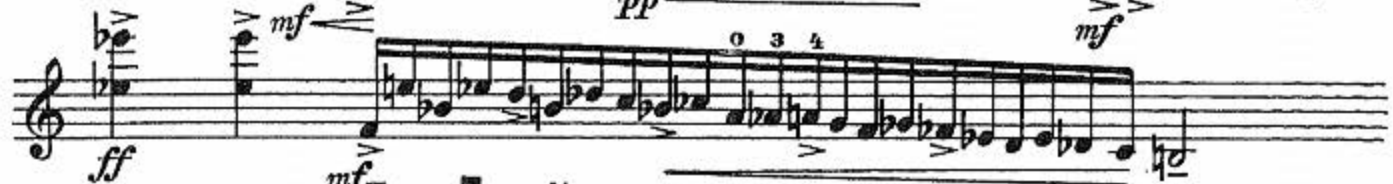
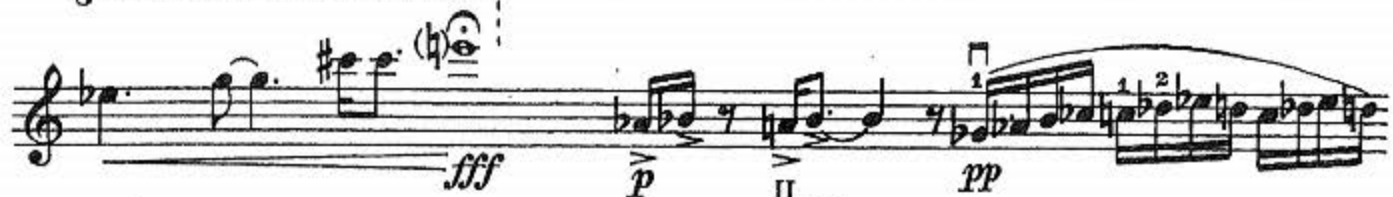
Fingerings and techniques are indicated by numbers (1-4) and letters (V, II, III) above or below notes. Some notes are marked with a circled 'b' for breath or a circled 'h' for harmonics.

The score includes complex passages with triplets, slurs, and dynamic markings. The final measure of the piece is marked with a circled 'f'.

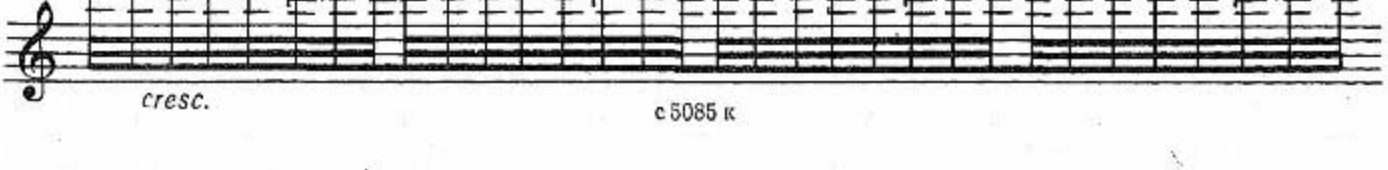
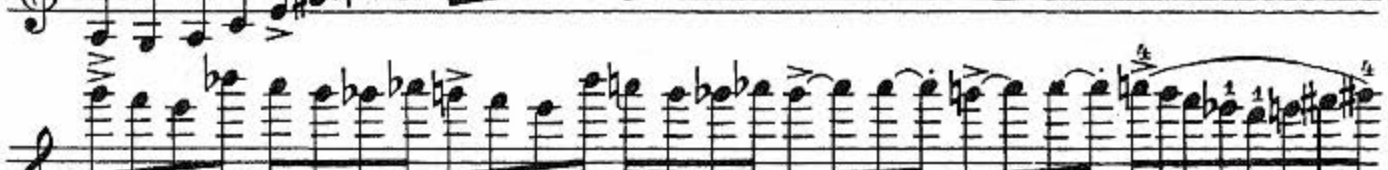
Copyright information: c 5085 k



8



This page of musical notation for guitar consists of ten staves. The music is written in a key with one flat (B-flat) and a 2/4 time signature. The notation includes a variety of techniques such as slurs, accents, and vibrato. Fingerings are indicated by numbers 1-4. Dynamics include *ff* (fortissimo) and *mf* (mezzo-forte) with the instruction *poco a poco cresc.* (poco a poco crescendo). The piece concludes with a final chord and a fermata.



cresc.

sul G.

