

Бас-кларнет В

МАРШ

на темы песен Г.Гладкова

Tempo di marsia ♩=120

TACET



МАРШ

Tempo di marsia $\text{♩} = 120$ на темы песен Г.Гладкова

Ю.Шпак

Инстр. к-та Шпака

Кл. ст. преподавателя

П/п-ка Гилёва А.Г.

3

f

7

§ 1

13

19

mp

25

2

31

37

41

3

f

109

1.

115

2.

Тенор В

МАРШ

Tempo di marsia $\text{♩} = 120$ на темы песен Г.Гладкова

7

13

19

25

31

37

43

48

§ 1

2

3

3

4

f

f

f

f

49

55

61

67

73

79

85

91

97

103

1.

2.

3

4

5

6

7

3

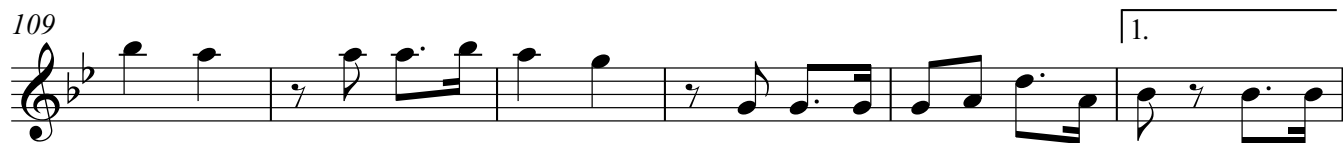
f

mp *cresc.*

f

Detailed description: This is a page of a musical score for Tenor B, containing measures 49 through 103. The score is written in a single system with ten staves. The key signature is B-flat major (two flats). The time signature is not explicitly shown but appears to be 4/4 based on the note values. The music features various melodic lines with slurs, ties, and dynamic markings. Measure 49 starts with a first ending bracket. Measure 55 has a second ending bracket. Measure 61 contains a triplet. Measure 73 has a first ending bracket and a triplet. Measure 79 has a first ending bracket and dynamic markings of *mp* and *cresc.*. Measure 85 has a triplet. Measure 91 has a first ending bracket and a dynamic marking of *f*. Measure 103 ends with a dynamic marking of *f*.

109



1.

Detailed description: This block contains the first staff of music, starting at measure 109. The key signature has one flat (B-flat). The staff contains six measures of music. Measure 109: quarter note G4, quarter note A4. Measure 110: quarter rest, eighth note G4, quarter note A4. Measure 111: quarter note G4, quarter note A4. Measure 112: quarter rest, eighth note G4, quarter note A4. Measure 113: quarter note G4, quarter note A4. Measure 114: quarter note G4, quarter note A4. A first ending bracket spans the final two measures (113 and 114), with the number '1.' written above it.

115



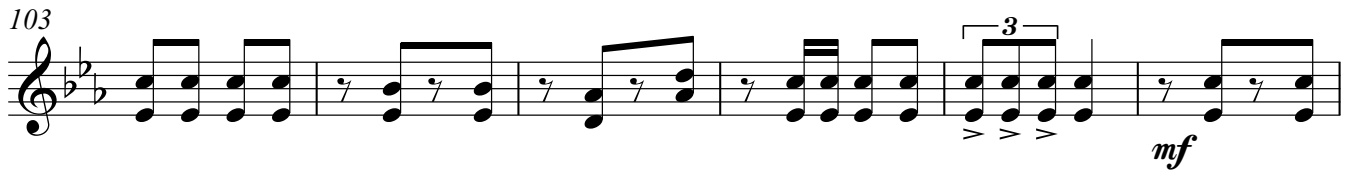
2.

Detailed description: This block contains the second staff of music, starting at measure 115. The key signature has one flat (B-flat). The staff contains four measures of music. Measure 115: quarter note G4, quarter rest. Measure 116: quarter rest, quarter note A4. Measure 117: quarter note G4, quarter note A4. Measure 118: quarter note G4, quarter note A4. A first ending bracket spans the first two measures (115 and 116), with the number '2.' written above it. The staff ends with a double bar line.

97



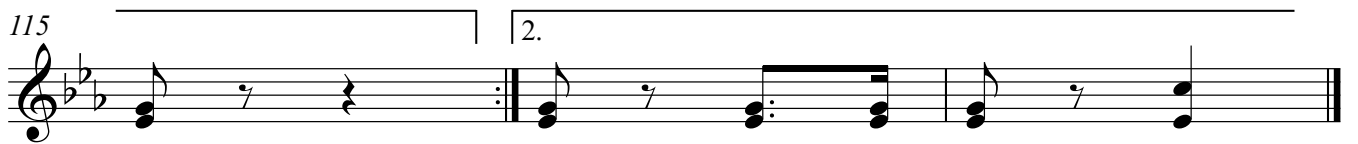
103



109



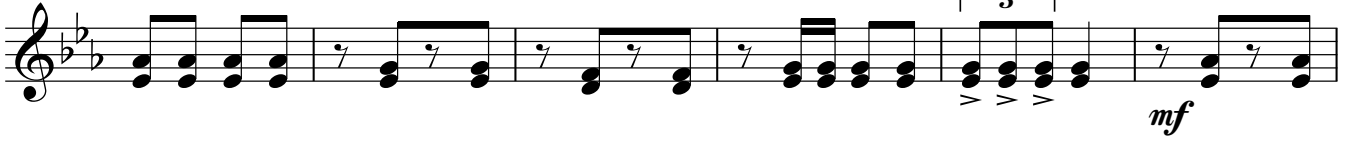
115



97



103



109



115



97

103

109

115

Тромбон

МАРШ

Tempo di marsia $\text{♩} = 120$ на темы песен Г.Гладкова

Ю.Шпак

I
II

f *a2* *a2*

Инструмент Шпак
Кл. ст. преподавателя
Шпак Елизавета А.Г.

7 **1**

13

19 *mp*

25 **2**

31

37

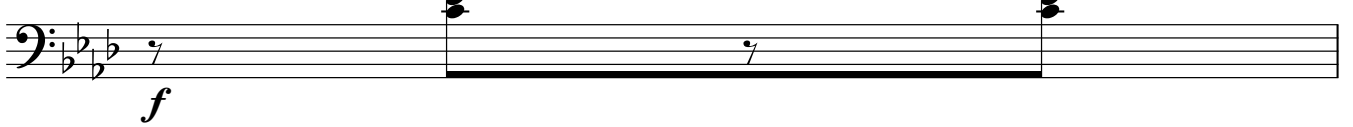
41 **3** *f* *a2*

43



4

48



49



5

55



61

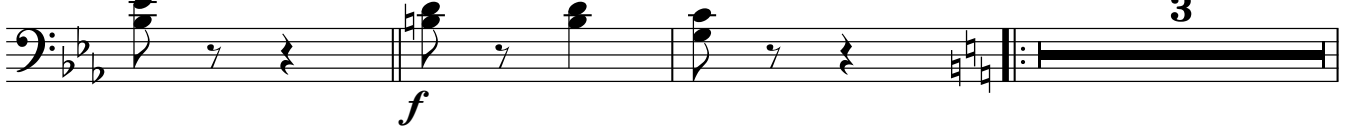


67



6

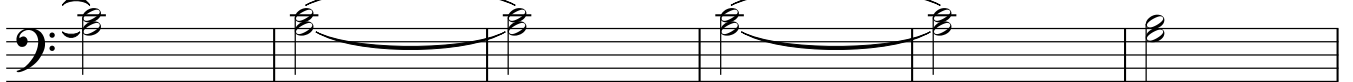
73



79



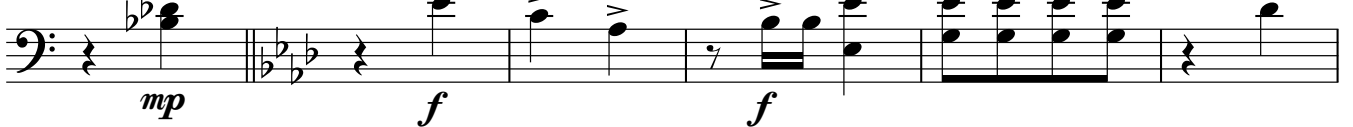
85

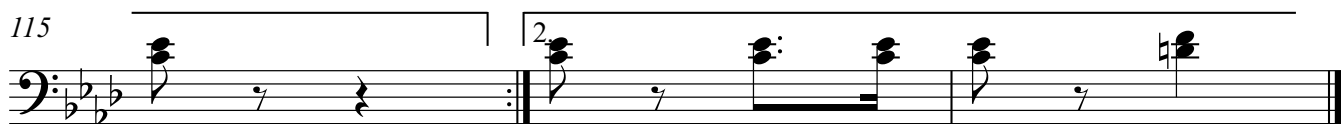
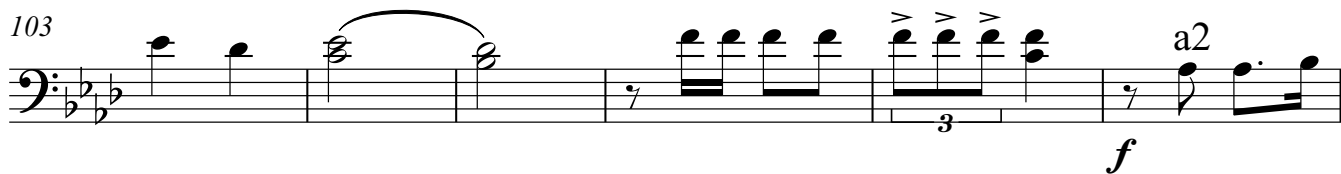


cresc.

7

91





Тромбон

МАРШ

Tempo di marsia ♩ = 120 на темы песен Г.Гладкова

Ю.Шпак

Инстр. к-та Шпака

Кл. с-я преподавателя

Пилка Емелья А.Г.

III

f 3 3

7

1

13

19

mp

25

2

31

37

41

3

f

97



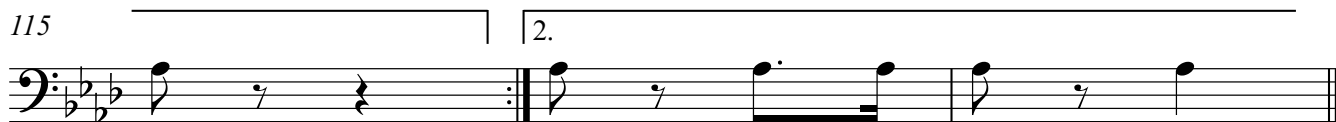
103



109



115



Малый барабан

МАРШ

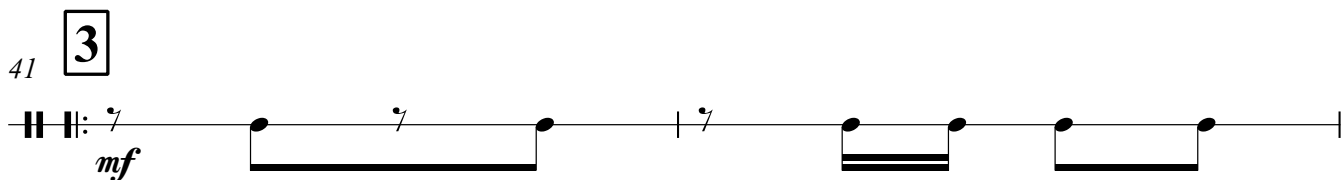
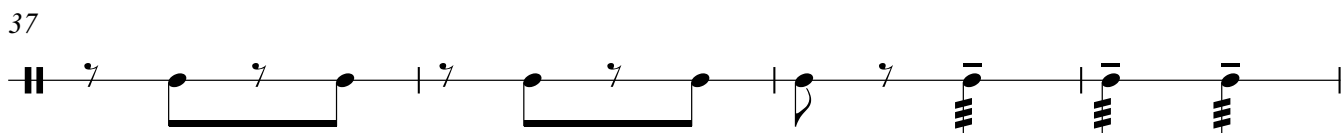
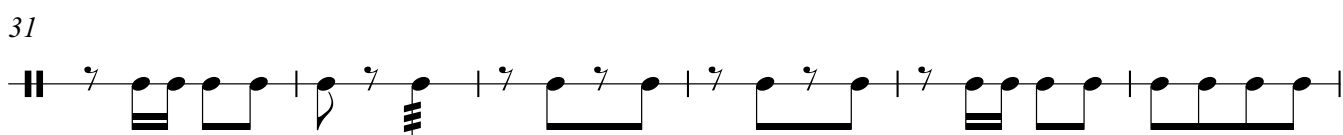
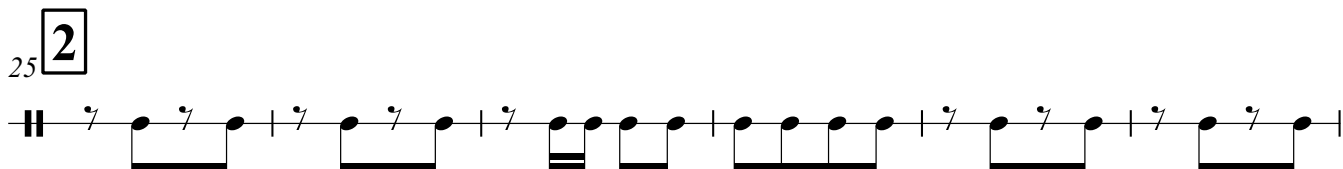
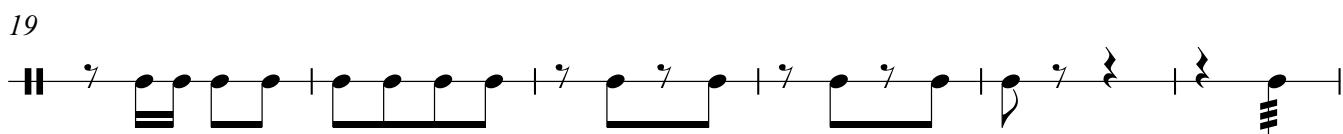
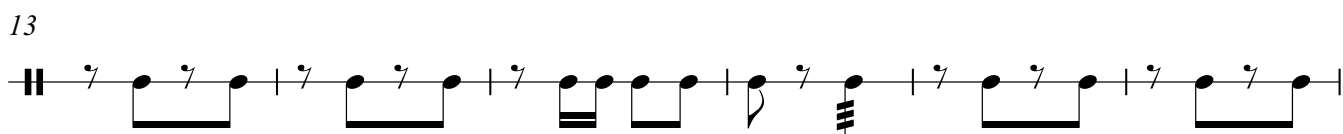
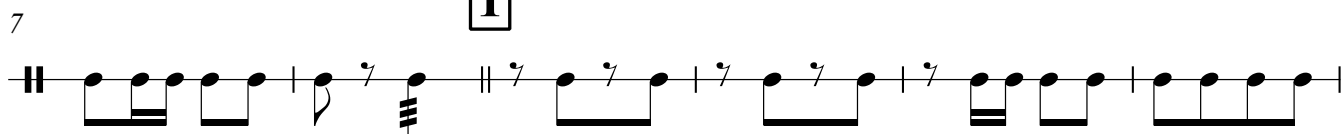
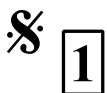
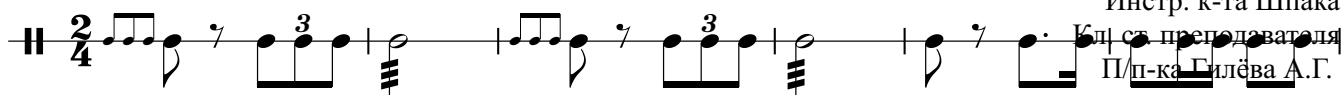
Tempo di marsia ♩=120 на темы песен Г.Гладкова

Ю.Шпак

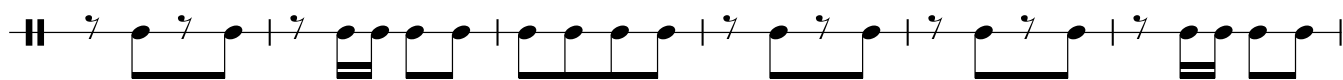
Инстр. к-та Шпака

Уч-ся преподавателя

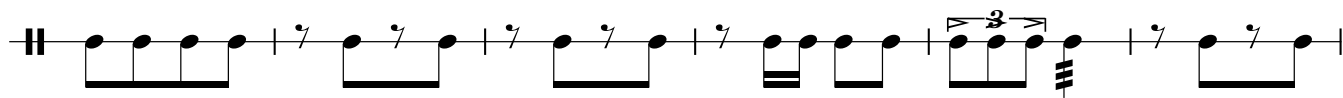
П/п-ка Гилёва А.Г.



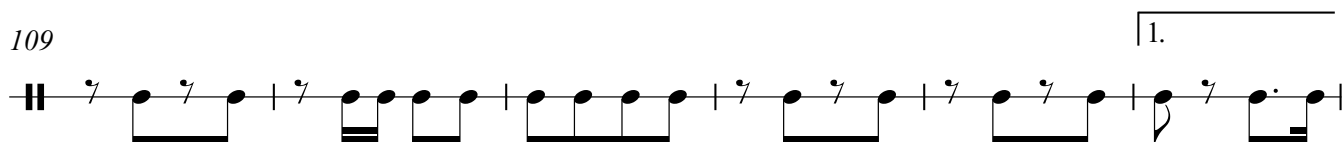
97



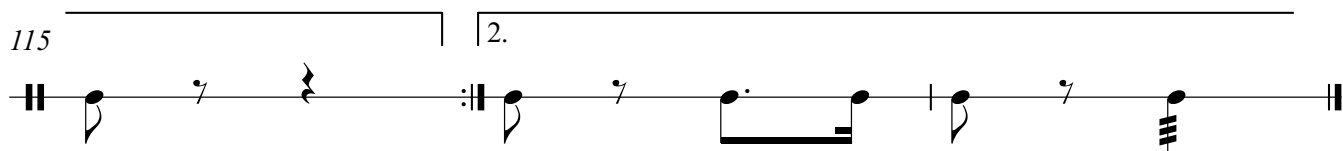
103



109



115



МАРШ***f*** Tempo di marsia ♩=120 на темы песен Г.Гладкова

Ю.Шпак

Инстр. к-та Шпака

Кл. ст. преподавателя

Шпак-Гилёва А.Г.

7

13

19

25

31

37

43

48

1

2

3

4

f

mp

mf

f

49

55

61

67

73

79

85

91

97

103

109

1.

115

2.

43

48 **4**

49

55 **5**

61

67

73 **6**

79 **6**

85 **6**

91 **7**

97

103

109

115

МАРШ

Tempo di marsia ♩ = 120 на темы песен Г.Гладкова

Ю.Шпак

Инстр. к-та Шпака

Кл. ст. преподавателя

Пш-ка Виçва А.Г.

II

f

§ 1

7

13

19

mp

2

25

31

37

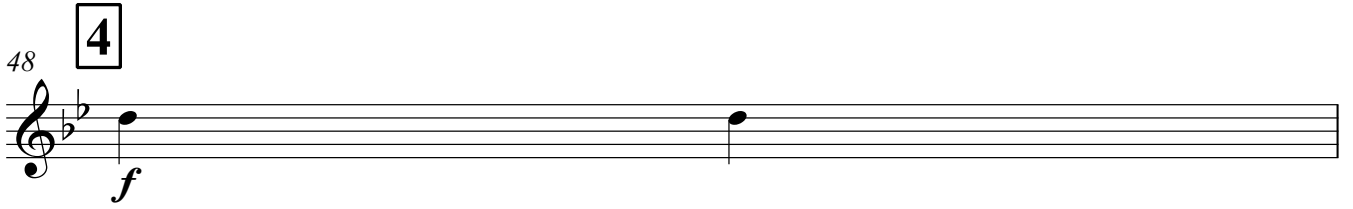
3

41

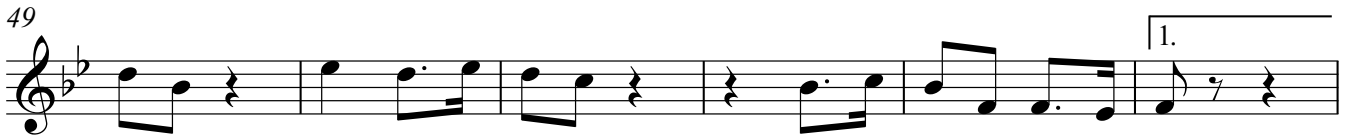
43



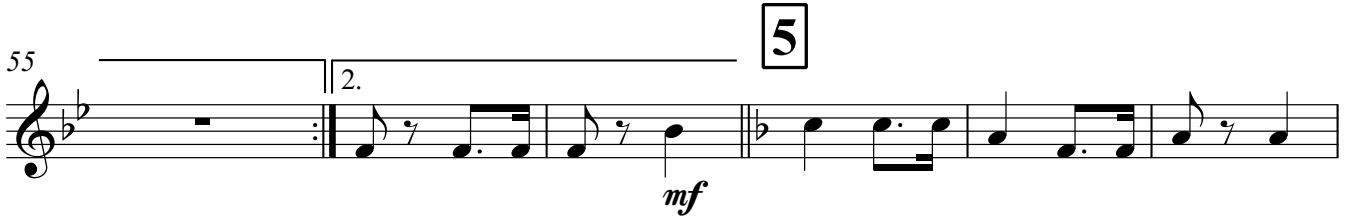
48 **4**



49




55 **5**



61



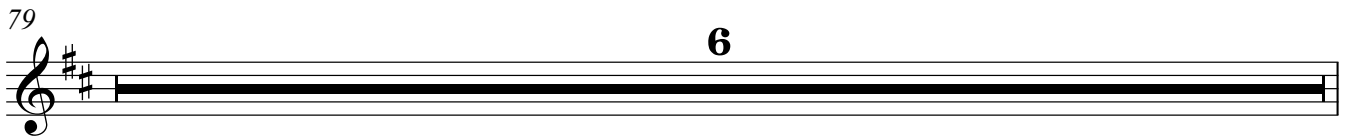
67



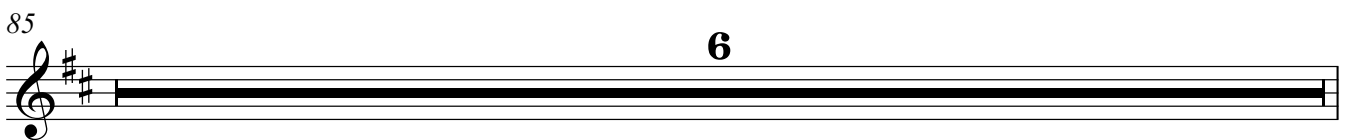
73 **6** **3**




79 **6**




85 **6**



91 **7**



97



103



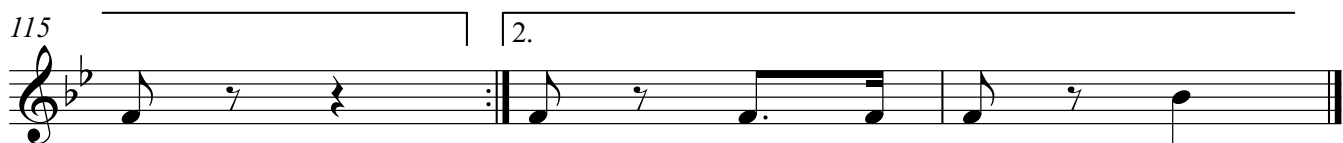
mf

109



1.

115



2.

Тенор В

МАРШ

Tempo di marsia ♩ = 120 на темы песен Г.Гладкова

Ю.Шпак

Инстр. к-та Шпака

Кл. от преподавателя

Шпак Гилёва А.Г.

7

13

19

25

31

37

43

48

49

55

61

67

73

79

85

91

97

103

1.

2.

3

5

6

7

f

p

cresc.

mp

f

f

Detailed description: This is a page of a musical score for Tenor B, consisting of nine staves of music. The key signature is B-flat major (two flats). The score begins at measure 49 and ends at measure 103. The music features various melodic lines with slurs, ties, and ornaments. There are several dynamic markings: *f* (forte) at measures 55, 73, and 103; *p* (piano) at measure 73; *mp* (mezzo-piano) at measure 91; and *cresc.* (crescendo) at measure 79. There are also three triplet markings (3) at measures 61, 73, and 85. The score includes first and second endings: a first ending bracketed '1.' at measure 49 and a second ending bracketed '2.' at measure 55. There are also boxed measure numbers: '5' at measure 55, '6' at measure 73, and '7' at measure 91. The notation includes treble clefs, stems, beams, slurs, ties, and various note values (quarter, eighth, and sixteenth notes).

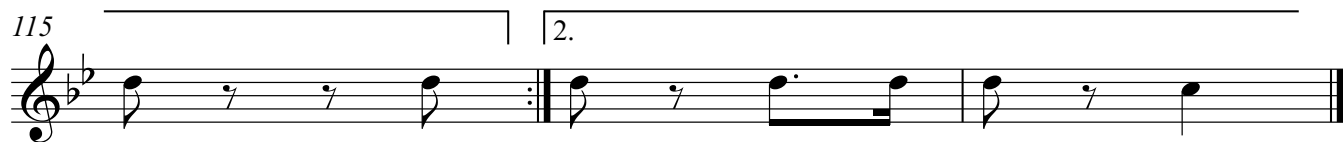
109



1.

Detailed description: This block contains the first staff of music, measures 109 through 114. It is written in a treble clef with a key signature of two flats (B-flat and E-flat). The melody consists of eighth and quarter notes with various rests. A first ending bracket labeled '1.' spans the final two measures (113 and 114).

115



2.

Detailed description: This block contains the second staff of music, measures 115 through 118. It continues in the same treble clef and key signature. The melody features eighth notes and quarter notes. A second ending bracket labeled '2.' spans the final two measures (117 and 118), which conclude with a double bar line.

МАРШ

Tempo di marsia ♩ = 120 на темы песен Г.Гладкова

Ю.Шпак

Инстр. к-та Шпака

Кл. ст. преподавателя

Шпак Гилёва А.Г.

7

13

19

25 **2**

31

37

43

48 **4**

49

55

61

67

73

79

85

91

97

103

1.

2.

3

5

6

7

f

p

cresc.

mp

f

f

Detailed description: This is a page of a musical score for Baritone B, containing measures 49 through 103. The score is written in a single system with ten staves. The key signature is B-flat major (two flats). The time signature is not explicitly shown but appears to be 4/4 based on the note values. The music features various melodic lines with slurs, ties, and dynamic markings. Measure 49 starts with a first ending bracket. Measure 55 has a second ending bracket and a dynamic marking of *f*. Measure 61 includes a triplet of eighth notes. Measure 67 has a dynamic marking of *f*. Measure 73 has a dynamic marking of *p*. Measure 79 has a *cresc.* marking. Measure 85 has a triplet of eighth notes. Measure 91 has dynamic markings of *mp* and *f*. Measure 97 has a dynamic marking of *f*. Measure 103 has a dynamic marking of *f*. Rehearsal marks 1 through 7 are placed in boxes above the staves.

МАРШ

Tempo di marsia ♩=120 на темы песен Г.Гладкова

Ю.Шпак

Инстр. к-та Шпака

Кл. ст. преподавателя

Шпак Гилёва А.Г.

I
II

7

13

19

25

31

37

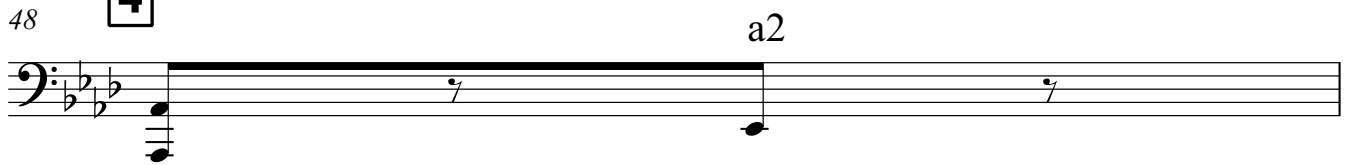
41

47

43



48



49



55



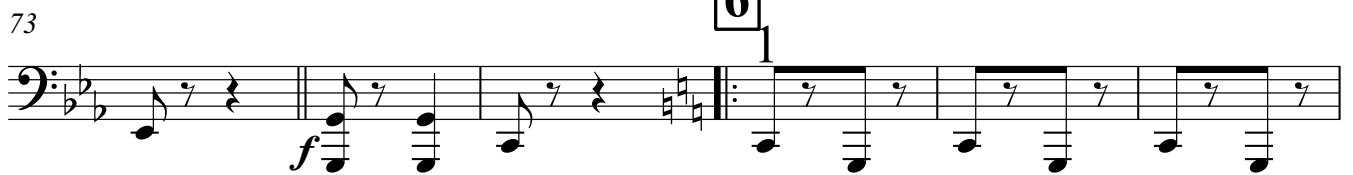
61



67



73



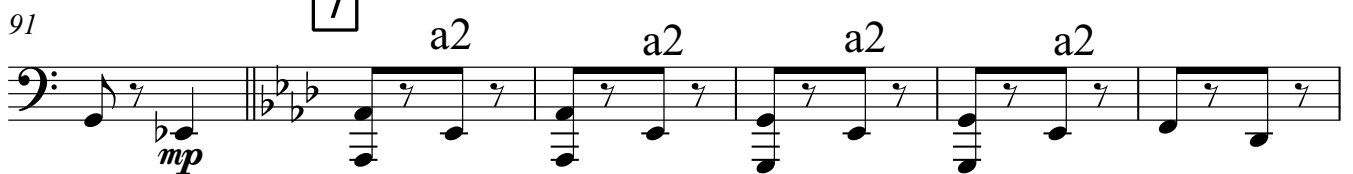
79



85



91



97

a2 a2 a2

103

a2 a2 a2

mf

109

a2 a2 a2

1.

115

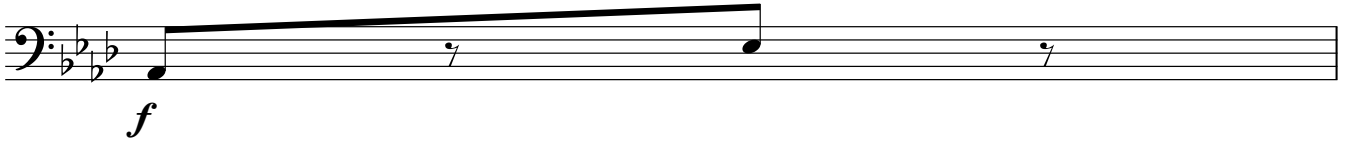
2.

43



48

4



49



55

5



61



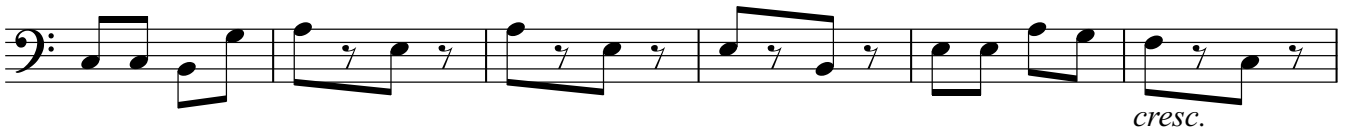
67



73

6_p

79



85



91

7



97



103



109



115

