

Марш в Немецком народном стиле

Зигфрид Бетман

Темп марша $\text{♩} = 120$

1. *f* *mf*

5

11

17 *mp*

22 *f* *p* **2**

27 *mf*

32 *tr* [1.]

37 *f* [2.]

40 *mf* **Трио**

Флейта

43 3 за 2-м разом *trm*
mp

49 *trm*

54 *trm* *f*

60 4 *trm*

65 *trm* 3

72 *p* *trm* *trm* *ff*

77 5 *trm*

82 *trm* 1. 2.

Марш в Немецком народном стиле

Зигфрид Бетман

Темп марша $\text{♩} = 120$

mf

5 **1** ♩ f

11 mf

17 ♩ 1. 2. mp

22 **2** f p

27 mf

32 tr ♩ 1. f p

37 ♩ 2. f

40 ♩ ♩ mf

Трио

Кларнет В 1

43 **2** **3** за 2-м разом *trm* *mp*

49 *trm*

54 *trm* *f*

60 **4** *trm*

65 *trm* *mf*

70 *trm* *p*

75 **5** *ff*

80 *trm* 1.

84 2.

Марш в Немецком народном стиле

Зигфрид Бетман

Темп марша $\text{♩} = 120$

5 **1** ♩ *f* *mf*

11

17

22 **2** *mp*

27 *f* *p*

32 *mf*

37 *f* **1.**

40 *f* **2.**

44 *mf* **Трио**

Кларнет В 2

43 3 за 2-м разом *mp* *trm*

49 *trm*

54 *trm* *f*

60 4 *trm*


65 *trm* *mf*

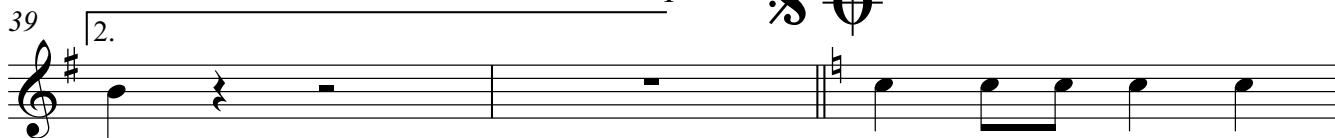
70 *p* *trm* *trm*

75 5 *ff*

80 *trm* *trm* 1.

84 2.

Валторна F 

39 

42 **Трио**
mf 

45 **3**
mp 

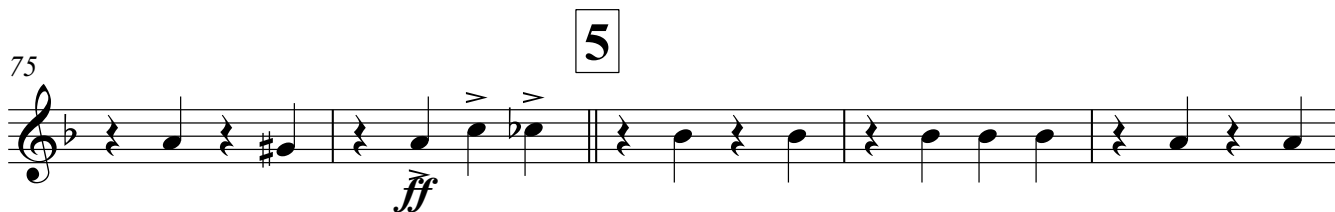
50 

55 

60 **4** 

65 

70 

75 **5**
ff 

80 

Валторна F

83

The musical score for Flute F, measures 83-86, is presented on a single staff with a treble clef and a key signature of one flat (B-flat). The piece consists of two endings. The first ending (marked '1.') spans measures 83, 84, and 85, ending with a repeat sign. The second ending (marked '2.') spans measures 86 and 87, concluding the phrase. The notes are as follows: Measure 83: quarter rest, quarter note G4, quarter note F4, quarter note E4. Measure 84: quarter note D4, quarter note C4, quarter rest, quarter rest. Measure 85: quarter note B3, quarter note A3, quarter note G3, quarter note F3. Measure 86: quarter note E3, quarter note D3, quarter note C3, quarter note B2. Measure 87: quarter note A2, quarter note G2, quarter note F2, quarter note E2.

Марш в Немецком народном стиле

Зигфрид Бетман

Темп марша ♩=120

1. *f* *mf*

5

10

14

18 *div.* *mp* 2.

22 *f* 2

27 *p* *mf*

32

36 1. 2. *sp*

Марш в Немецком народном стиле

Зигфрид Бетман

Темп марша $\text{♩} = 120$

5 **1** *f* *mf*

10

14

18

23 **2** *f*

28 *p*

33 *mf*

37 *sp* **1.**

sp **2.**

Труба В 2

Трио

40 $\text{S} \cdot \text{O}$

43 **2** **3** **11** *mf* *f*

60 **4** **7** *mf* **5**

72 **3** *p* *ff*

80 1.

84 2.

Марш в Немецком народном стиле

Зигфрид Бетман

Темп марша $\text{♩} = 120$

5

1

f
mf

10

14

18

23

2

f *p*

29

f

35

sp

40

Трио

Тромбон 1, 2

43 **2** **3** **12**

61 **4** **14** *f*

77 **5** *mf* *ff*

83 1. 2.

Марш в Немецком народном стиле

Зигфрид Бетман

Темп марша $\text{♩} = 120$

5 **1** ♩

f

10

mf

14

18

23 **2**

f *p*

29

f

35

1.

Тромбон 3



39 2.

42 **Трио** 3 **2** **12**

59 4 **14** **f** **mf** **ff**

77 5

82 1. 2.

Марш в Немецком народном стиле

Зигфрид Бетман

Темп марша ♩=120

f

5 *mf*

10

14

18 1. 2. *f*

23 *p* *p*

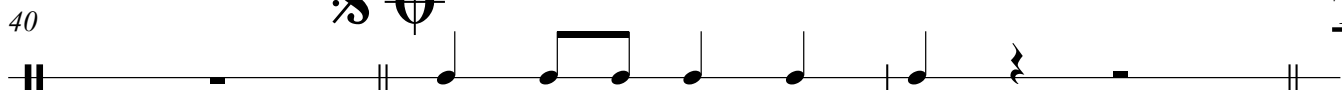
28 *f*

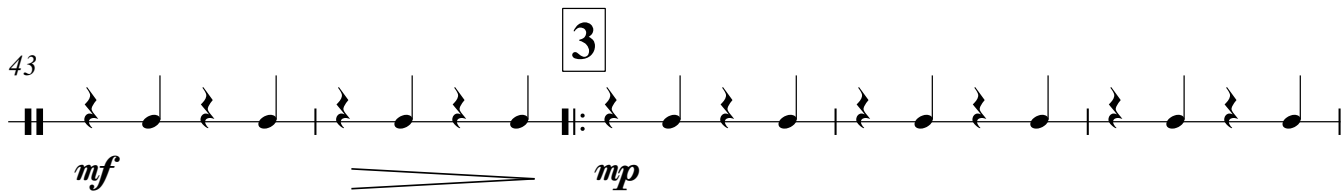
33 1.

37 *mf*

Мал. барабан

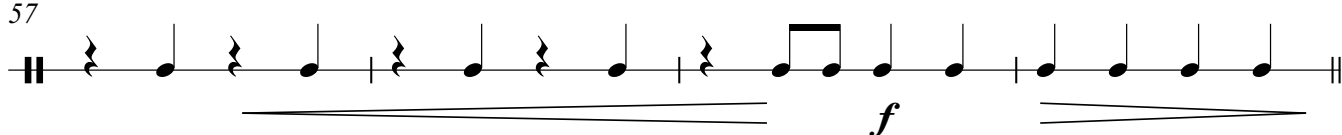
Трио

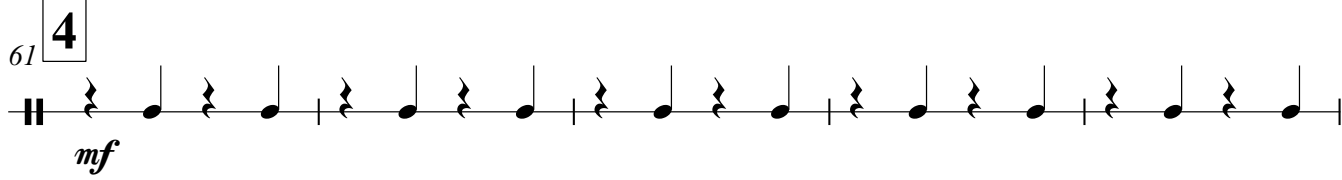
40 

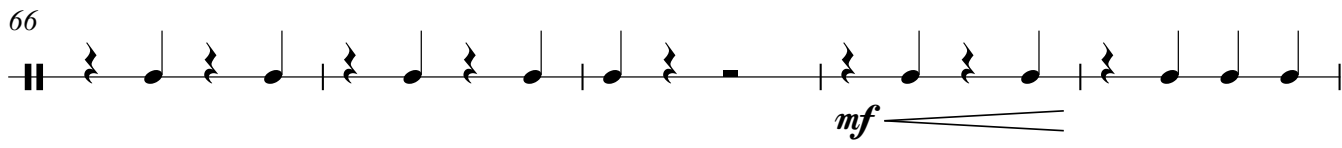
43 

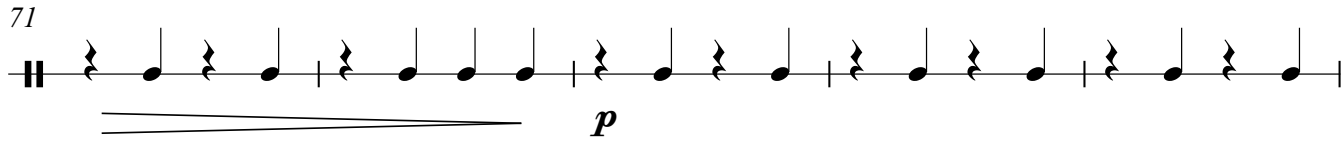
48 

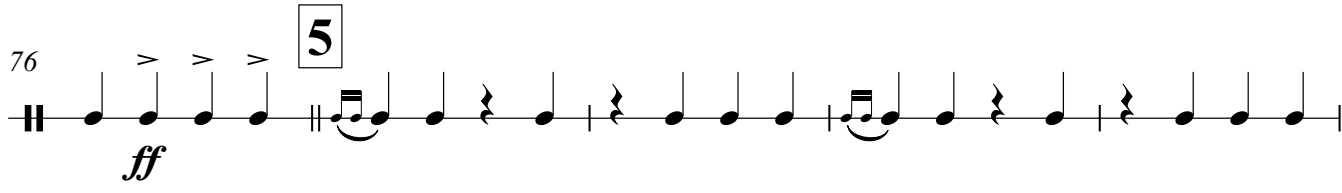
53 

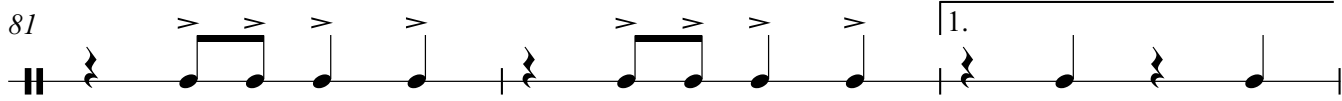
57 

61 

66 

71 

76 

81 

Мал. барабан

84

The musical notation is written on a single staff. It begins with a double bar line. The first measure contains a quarter note, followed by a beamed eighth-note pair, and then two more quarter notes. A trapezoidal shape is drawn below the staff under the first three notes, indicating a dynamic change. A first ending bracket spans the first three notes. The second measure starts with a repeat sign, followed by a quarter note, a quarter note, and a half note. A second ending bracket spans the last two notes of this measure. The piece concludes with a final double bar line.

Марш в Немецком народном стиле

Зигфрид Бетман

Темп марша $\text{♩} = 120$

5 *f*

5 **1** *mf*

10

14

18

23 **2** *f* *p* *p*

28 *f*

33

38

Тарелки

Трио

2

41

f

45

3 **4** **16** **8** *mf*

73

3 **5** *ff*

80

1. >

84

2. >

Марш в Немецком народном стиле

Зигфрид Бетман

Темп марша $\text{♩} = 120$

5 *f*

5 **1** *mf*

10

14

18

23 **2** *f* *p* *p*

28 *f*

33 **1.**

38 **2.** ♩ ♩

Бол. барабан

Трио

41

mf

45

3

mp

50

55

60

4

mf

65

mf

70

p

75

5

ff

80

1.

84

2.

Марш в Немецком народном стиле

Зигфрид Бетман

Темп марша $\text{♩} = 120$

1 *f* *mf*

5 *divisi* 8

11

17 *divisi* 1. 2. *mp*

22 2 *f* *p*

27 *mf*

32 1.

37 2. *f*

40 *mf* **Трио**

Корнет В 1

43 **2** **3** **11** *mf* *f*

61 **4** **7** *mf*

72 *p* *ff*

77 **5**

82 1. 2.

Корнет В 2

43 **2** **3** **11** *mf* *f*

60 **4** **7** *mf*

72 *p* *ff*

77 **5**

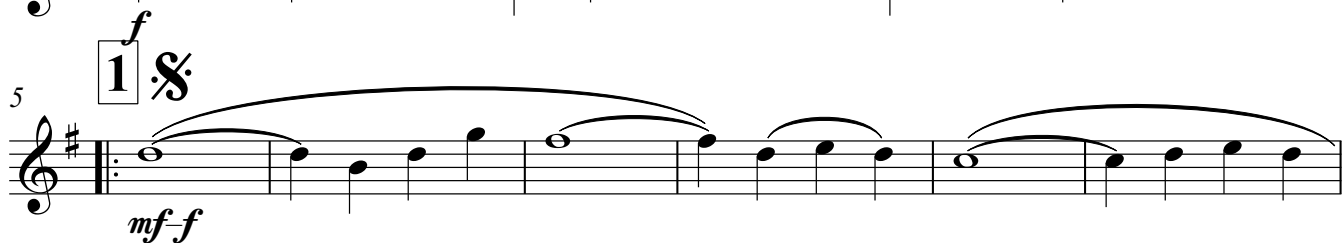
83 1. 2.

Тенор В 1

Марш в Немецком народном стиле

Зигфрид Бетман

Темп марша $\text{♩} = 120$

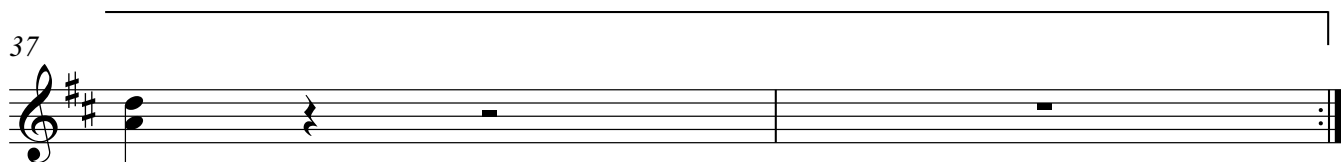
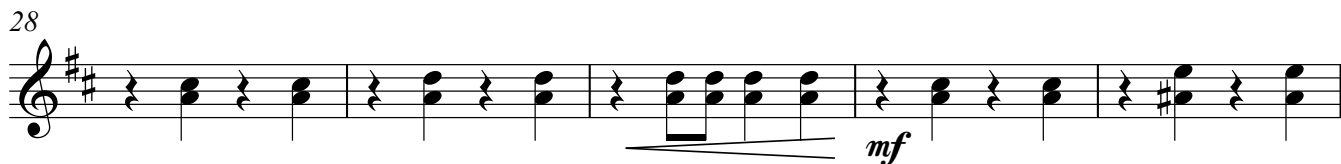
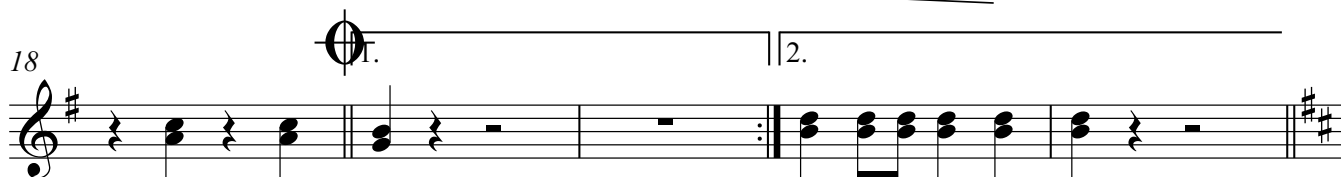
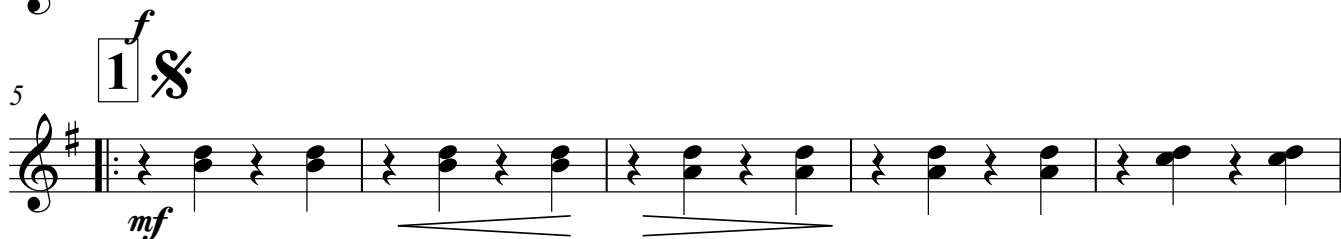


Тенор В 2

Марш в Немецком народном стиле

Зигфрид Бетман

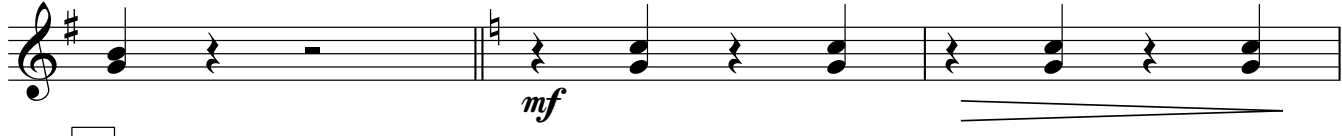
Темп марша $\text{♩} = 120$




39 2. Тенор В 2 



42 **Трио**
mf



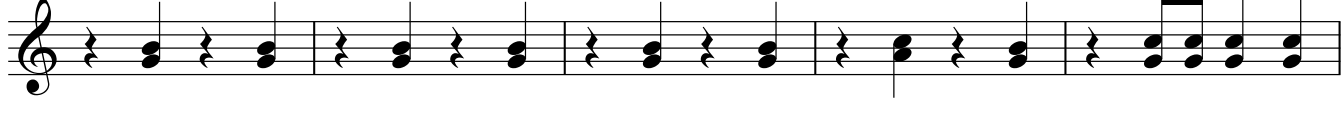
45 3
mp



50



55




60 4



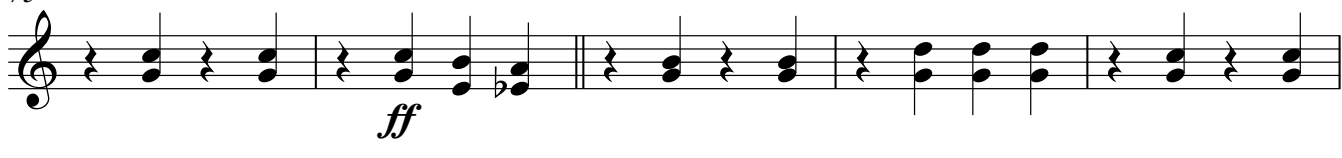
65



70



75 5
ff



80



83 | 1. | Тенор | В.2

Musical notation for a tenor part, measures 83-86. The notation is on a single staff with a treble clef. It consists of four measures. The first measure has a quarter rest followed by a dotted quarter note G4. The second measure has a quarter rest followed by a dotted quarter note A4. The third measure has a quarter rest followed by a dotted quarter note B4. The fourth measure has a quarter rest followed by a dotted quarter note C5. There is a repeat sign after the first three measures, and a double bar line at the end of the fourth measure.

Баритон В

Марш в Немецком народном стиле

Зигфрид Бетман

2.

Темп марша $\text{♩} = 120$

ТАСЕТ



Марш в Немецком народном стиле

Зигфрид Бетман

Темп марша $\text{♩} = 120$

5 **1. S**

10 *mf*

14

18 **1.** **2.**

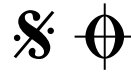
23 **2**

28 *f* *p* *f*

33 **1.**

38

Бас 1, 2



39 2.

42 **Трио**

45 3

50

55

60 4

65

70

75 5

80 1.

Бас 1, 2

84

2.

v