

Tempo Samba

Handwritten musical score for the first system. The top staff contains a melody in treble clef, starting with a *ff* dynamic marking. The accompaniment consists of three staves: the first two are in bass clef and the third is in treble clef. The first two staves of the accompaniment have some notes and chords, while the third staff is mostly empty with some rests. The time signature is 3/4.

Handwritten musical score for the second system. The top staff continues the melody, marked with *mp* and a hairpin crescendo. A second ending bracket is present. The accompaniment continues in the three staves below, with *mp* markings and some chord changes. The time signature remains 3/4.

Handwritten musical score for the first system, consisting of five staves. The notation includes various note values, rests, and dynamic markings. The first staff begins with a treble clef and a key signature of one flat. A dynamic marking of *mp* (mezzo-piano) is present. The second staff contains a chord symbol *M6*. The system concludes with a double bar line.

Handwritten musical score for the second system, starting with a boxed measure number **3**. It consists of five staves. The first staff begins with a treble clef and a key signature of one flat, marked with a dynamic of *ff* (fortissimo). The second staff contains a chord symbol *M6*. The system concludes with a double bar line.

tempo Samba

8-1

1

mf

This system contains the first two staves of music. The top staff is in treble clef and the bottom staff is in bass clef. The music begins with a treble clef and a key signature of one flat. A circled '1' is written above the first measure. A dynamic marking of 'mf' is placed between the staves. The system concludes with double bar lines and repeat slashes on both staves.

8

mf

This system contains the next two staves of music. The top staff continues with treble clef notation, and the bottom staff continues with bass clef notation. A dynamic marking of 'mf' is present. The system ends with double bar lines and repeat slashes.

This system contains two staves of music. The top staff is mostly empty, with some notes in the final measures. The bottom staff contains bass clef notation. The system ends with double bar lines and repeat slashes.

8

This system contains the final two staves of music. The top staff continues with treble clef notation, and the bottom staff continues with bass clef notation. The system ends with double bar lines and repeat slashes.

This image shows a handwritten musical score consisting of four systems of staves. Each system typically includes a treble clef staff and a bass clef staff. The notation is dense, featuring various note values, rests, and dynamic markings such as *ff* (fortissimo) and *mf* (mezzo-forte). A circled number '5' is present at the top of the first system. The score is written in black ink on a white background. At the bottom of the page, there are several empty musical staves.

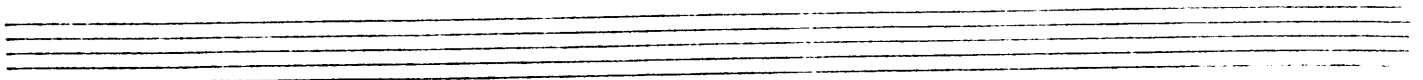
The first system of the handwritten musical score consists of four staves. The top two staves contain complex melodic and harmonic lines with many beamed notes and slurs. The bottom two staves appear to be for a lower instrument, possibly piano or cello, with simpler chordal and melodic patterns. A dynamic marking of *f* (forte) is present in the second measure of the second staff. There are also some slanted lines and repeat signs in the lower staves.

The second system of the handwritten musical score also consists of four staves. The top two staves feature melodic lines with slurs and some dynamic markings like *p* (piano). The bottom two staves contain more complex notation, including chords and melodic fragments. A dynamic marking of *pp* (pianissimo) is visible in the first measure of the bottom-most staff. The notation is dense and includes various musical symbols such as slurs, ties, and dynamic markings.

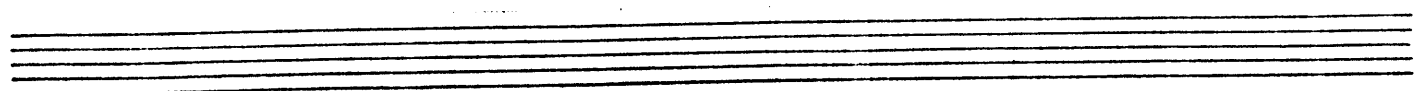
Handwritten musical score system 1, consisting of four staves. The top staff is a treble clef with a melodic line. The second staff is a bass clef with a bass line. The third and fourth staves are also bass clefs, likely for a second bass instrument or a figured bass. The music is written in a single system with four measures. The notation includes various note values, rests, and dynamic markings.

Handwritten musical score system 2, consisting of four staves. The top staff is a treble clef with a melodic line. The second staff is a bass clef with a bass line. The third and fourth staves are also bass clefs, likely for a second bass instrument or a figured bass. The music is written in a single system with four measures. The notation includes various note values, rests, and dynamic markings.

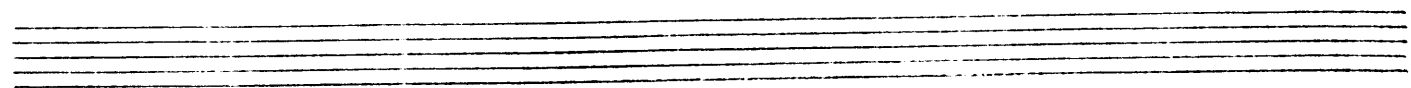
Handwritten musical score for the first system. It consists of four staves. The top two staves appear to be for a melodic instrument, while the bottom two are for a piano accompaniment. The notation includes various note values, rests, and dynamic markings such as *mf* and *f*. There are also some handwritten annotations and a measure with a circled '8'.



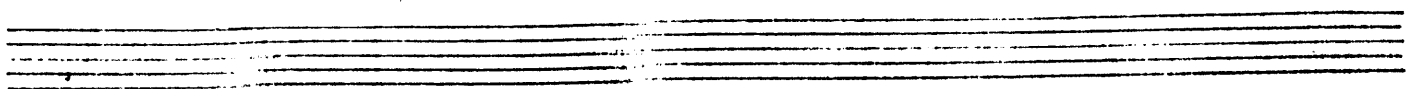
Handwritten musical score for the second system. It consists of four staves, similar in layout to the first system. The notation continues with various note values, rests, and dynamic markings like *mf*. There are also some handwritten annotations and a measure with a circled '8'.



Handwritten musical score, first system. It consists of five staves. The top staff is a vocal line with lyrics and a circled number '8' above it. The second staff is a piano accompaniment. The third and fourth staves are for a string quartet (Violin I, Violin II, Viola, and Cello/Double Bass). The notation includes various musical symbols such as notes, rests, and dynamic markings.



Handwritten musical score, second system. It consists of five staves. The top staff is a vocal line with lyrics and a circled number '9' above it. The second staff is a piano accompaniment. The third and fourth staves are for a string quartet (Violin I, Violin II, Viola, and Cello/Double Bass). The notation includes various musical symbols such as notes, rests, and dynamic markings.



Handwritten musical score for the first system, consisting of five staves. The top staff contains a melodic line with various notes and rests. A circled number '10' is written above the staff. The second and third staves are mostly empty, with double bar lines indicating rests. The fourth and fifth staves contain accompaniment with chords and rhythmic patterns. Chord symbols '7' and 'M5' are present.

Handwritten musical score for the second system, consisting of five staves. The top staff continues the melodic line. The second staff contains a complex accompaniment with many notes and rests. Chord symbols 'M3', '7', and 'M3' are present. The third and fourth staves contain accompaniment with chords and rhythmic patterns. Chord symbols 'b7' and '7' are present. The fifth staff contains a simple accompaniment with rhythmic patterns.



Handwritten musical score for a piano piece, first system. The score consists of five staves. The top staff is the treble clef, containing a melodic line with slurs and ties. The second staff is the right-hand accompaniment, featuring a rhythmic pattern of eighth notes and chords. The third staff is the bass clef, containing a bass line with some rests. The fourth and fifth staves are additional accompaniment parts, possibly for a second piano or a specific instrument, with some notes and rests. The system ends with a double bar line.

Handwritten musical score for a piano piece, second system. The score consists of five staves. The top staff is the treble clef, containing a melodic line with slurs and ties. The second staff is the right-hand accompaniment, featuring a rhythmic pattern of eighth notes and chords. The third staff is the bass clef, containing a bass line with some rests. The fourth and fifth staves are additional accompaniment parts, possibly for a second piano or a specific instrument, with some notes and rests. The system ends with a double bar line.