

Round O (Z.T684)

(Rondeau from Abdelazer Z.570/2)

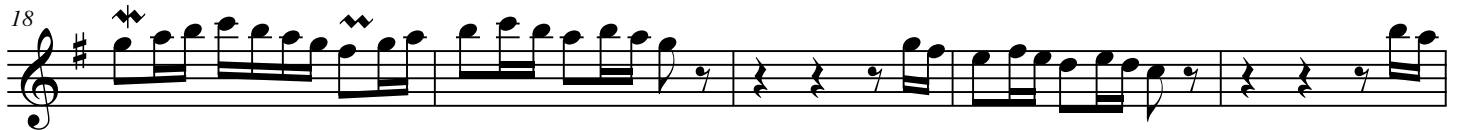
for Trumpet & Organ

Trumpet in Bb

Henry Purcell (1668-1695)

Arr. Michel Rondeau

Allegro maestoso ♩ = 100



Round O (Z.T684)

(Rondeau from Abdelazer Z.570/2)

for Trumpet & Organ

Trumpet in C

Henry Purcell (1668-1695)

Arr. Michel Rondeau

Allegro maestoso ♩ = 100

6

12 I.
Fini

18

23 D.C. to Rondo II.

29 D.C. to Rondo

Round O (Z.T684)

(Rondeau from Abdelazer Z.570/2)

Organ

for Trumpet & Organ

Henry Purcell (1668-1695)

Arr. Michel Rondeau

Allegro maestoso ♩ = 100

Trumpet in C

Organ

C Tpt.

Org.

C Tpt.

Org.

Fini

Fini

Purcell Round O (Z.T684) Organ

C Tpt. ¹⁷ I.

Org.

C Tpt. ²¹ D.C. to Rondo

Org. D.C. to Rondo

C Tpt. ²⁵ II.

Org.

C Tpt. ²⁹ D.C. to Rondo

Org. D.C. to Rondo

Round O (Z.T684)

(Rondeau from Abdelazer Z.570/2)

for Trumpet & Organ

Score

Henry Purcell (1668-1695)

Arr. Michel Rondeau

Allegro maestoso ♩ = 100

Trumpet in C

Organ

Detailed description: This system contains the first five measures of the score. The Trumpet in C part is written in a single staff with a treble clef, a key signature of one flat (B-flat), and a 3/4 time signature. It begins with a quarter rest, followed by a quarter note G4, a quarter note A4, and a quarter note B4. From measure 2, it features a continuous eighth-note pattern: G4-A4-B4-A4-G4-F#4-E4-D4. The Organ part is written in two staves (treble and bass clefs). The right hand plays chords in the treble clef, and the left hand plays a simple bass line in the bass clef, primarily consisting of quarter notes G3, A3, and B3.

C Tpt.

Org.

Detailed description: This system contains measures 6 through 11. The C Trumpet part continues with the eighth-note pattern from measure 2, ending with a quarter rest in measure 11. The Organ part continues with its accompaniment, featuring some chordal changes in the right hand and a steady bass line in the left hand.

C Tpt.

Org.

Detailed description: This system contains the final four measures (12-15) of the piece. The C Trumpet part has a quarter rest in measure 12, followed by quarter notes G4, A4, and B4 in measures 13, 14, and 15. The Organ part continues with its accompaniment, ending with a final chord in the right hand and a quarter note G3 in the left hand. Both parts are marked with "Fini" at the end of the system.

Purcell Round O (Z.T684)

C Tpt. 17 I.

Org. 17 I.

C Tpt. 21 D.C. to Rondo

Org. 21 D.C. to Rondo

C Tpt. 25 II.

Org. 25 II.

C Tpt. 29 D.C. to Rondo

Org. 29 D.C. to Rondo