

ПИОНЕРСКИЙ МАРШ

А. Школяр

$\text{♩} = 110$
f *mf*

1

2
f

3

трио
f

4 7 5
f

1. 2.

ПИОНЕРСКИЙ МАРШ

А. Школяр

f *mf*

1

2 *f*

3

трио *f*

4 *mf*

5 *f*

1. 2.

ПИОНЕРСКИЙ МАРШ

А. Школяр

$\text{♩} = 110$

f *mf*

1

2 *f*

3

1. 2. *f* трио

4 *mf*

5 *f*

1. 2.

ПИОНЕРСКИЙ МАРШ

А. Школяр

$\text{♩} = 110$

f *mf*

1

2

ff

3

трио

f

4 8 5

1. 2.

ПИОНЕРСКИЙ МАРШ

А. Школяр

$\text{♩} = 110$

f *mf*

1

2

ff

3

2. трио

f

4 5 8

1. 2.

ПИОНЕРСКИЙ МАРШ

А. Школяр

$\text{♩} = 110$

f *mf*

1

2 *f*

3

1. 2. трио

f

4 8 5 *f*

1. 2.

ПИОНЕРСКИЙ МАРШ

А. Школяр

♩=110

First staff of music, starting with a treble clef and a 2/4 time signature. It begins with a dynamic marking of *f* and a repeat sign. The first ending is marked *mf*.

Second staff of music, continuing the rhythmic pattern.

1

First ending of the first system, marked with a box containing the number 1.

2

Second ending of the first system, marked with a box containing the number 2. It starts with a dynamic marking of *f*.

3

Third ending of the first system, marked with a box containing the number 3. It includes a first ending bracket labeled "1." at the end.

2.

трио

Second ending of the second system, marked with a box containing the number 2. It includes a time signature change to 2/4 and a dynamic marking of *f*.

4

Fourth ending of the second system, marked with a box containing the number 4. It starts with a dynamic marking of *mf*.

5

Fifth ending of the second system, marked with a box containing the number 5. It starts with a dynamic marking of *f*.

1.

2.

Final ending of the piece, marked with boxes containing the numbers 1. and 2.

ПИОНЕРСКИЙ МАРШ

А. Школяр

$\text{♩} = 110$

f *mf*

1 4

2 4 8

f

3 1.

2. трио $\frac{2}{4}$ *f*

4 4 8

mf

5 1. 2.

f

ПИОНЕРСКИЙ МАРШ

А. Школяр

$\text{♩} = 110$

f *mf*

1

2

3

1. 2. трио *f*

4 8 5 *f*

1. 2.

ПИОНЕРСКИЙ МАРШ

А. Школяр

$\text{♩} = 110$

f *mf*

1

2

3

1. 2. трио

f

4 8 5

f

1. 2.

ПИОНЕРСКИЙ МАРШ

А. Школяр

$\text{♩} = 110$

f *mf*

1

2 *f*

3

1. 2. **трио** *f*

4 *mf*

5 *f*

1. 2.

ПИОНЕРСКИЙ МАРШ

А. Школяр

$\text{♩} = 110$

f *mf*

1

2 *f*

3

1. 2. трио *f*

4 *mf*

5 *f*

1. 2.

ПИОНЕРСКИЙ МАРШ

А. Школяр

♩=110

f *mf*

1

2 *ff*

3 1.

2. трио *f*

4 *mf*

5 *f*

1. 2.

Detailed description of the musical score: The score is for Tenor 1 and is in 2/4 time. It begins with a tempo marking of quarter note = 110. The first staff starts with a forte (*f*) dynamic and a series of eighth-note chords. The second staff continues with a mezzo-forte (*mf*) dynamic and features a first ending bracket labeled '1'. The third staff has a fortissimo (*ff*) dynamic and includes a second ending bracket labeled '2'. The fourth staff contains a first ending bracket labeled '1.' and a second ending bracket labeled '2.'. The fifth staff is marked 'трио' (trio) and returns to a forte (*f*) dynamic. The sixth staff is marked mezzo-forte (*mf*) and features a first ending bracket labeled '4'. The seventh staff is marked forte (*f*) and continues with eighth-note chords. The eighth staff concludes with two first ending brackets labeled '1.' and '2.'. The key signature changes from C major to B-flat major (one flat) in the fifth staff.

ПИОНЕРСКИЙ МАРШ

А. Школяр

$\text{♩} = 110$

f *mf*

1

2 *ff*

3

1. 2. **трио** *f*

4 *mf*

5 *f*

1. 2.

ПИОНЕРСКИЙ МАРШ

А. Школяр

$\text{♩} = 110$

f *mf*

1

2

ff

3

1.

2.

трио

f

4

mf

5

f

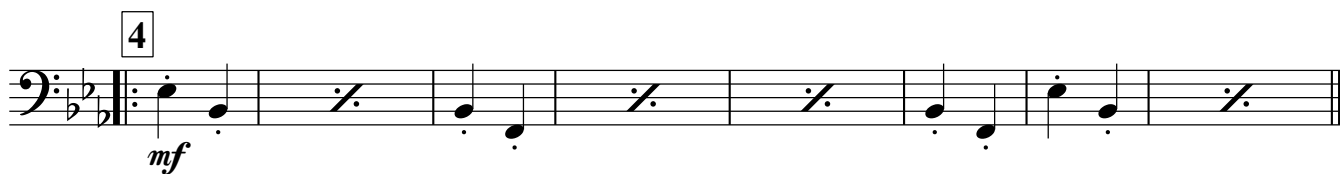
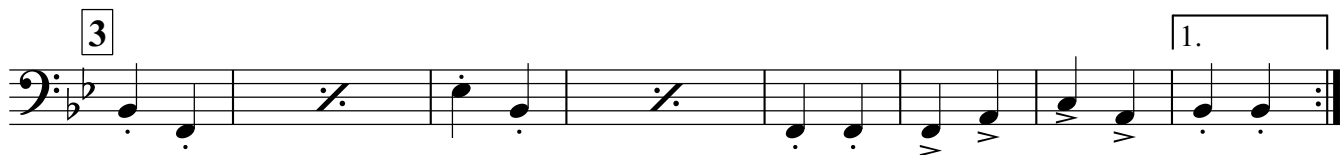
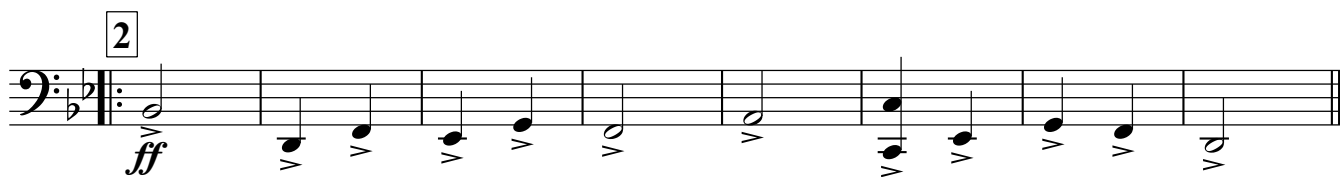
1.

2.

ПИОНЕРСКИЙ МАРШ

А. Школяр

♩=110



ПИОНЕРСКИЙ МАРШ

А. Школяр

♩=110

