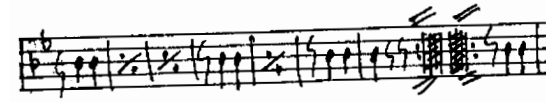
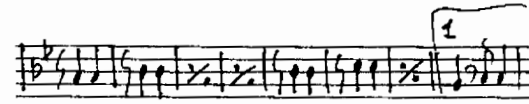
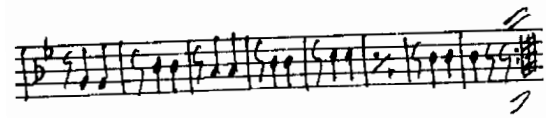
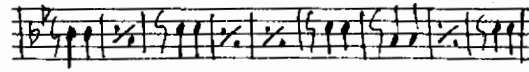
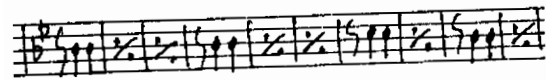
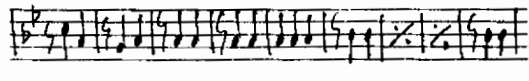
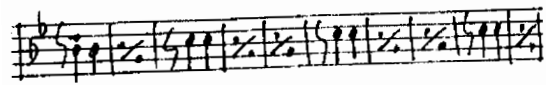
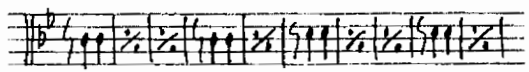


ВАЛЬС „РАЗБИТАЯ  
ЖИЗНЬ“ М. КЮСЕ

Альот 1

ВАЛЬС „РАЗБИТАЯ ЖИЗНЬ“

АЛЬТ 2



# ВАЛЬС „РАЗБИТАЯ ЖИЗНЬ“

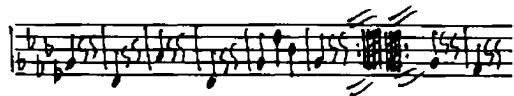
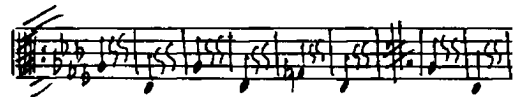
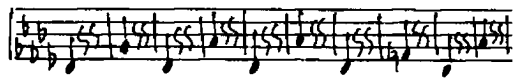
М. КЮСС

Handwritten musical score for the first part of the waltz "Разбитая жизнь" by M. Küss. It consists of seven staves of music in 3/4 time, featuring a treble clef and a key signature of two flats (B-flat and E-flat). The notation includes various note values, rests, and dynamic markings such as "f" and "p". There are also some handwritten annotations like "3" and "5" below the notes.

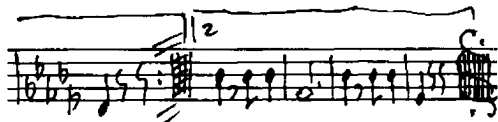
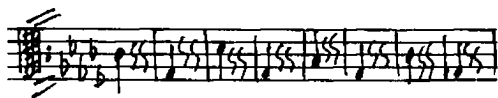
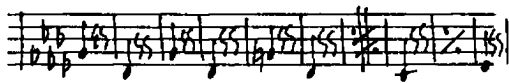
БАРИТОН

Handwritten musical score for the baritone part of the waltz "Разбитая жизнь" by M. Küss. It consists of seven staves of music in 3/4 time, featuring a bass clef and a key signature of two flats (B-flat and E-flat). The notation includes various note values, rests, and dynamic markings such as "f" and "p". There are also some handwritten annotations like "1" and "2" above the notes.

ВАЛЬС „РАЗБИТАЯ ЖИЗНЬ“

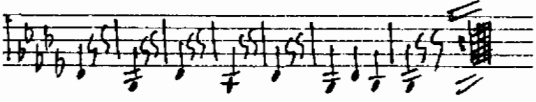
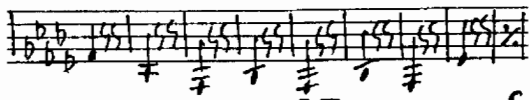
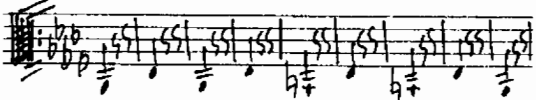
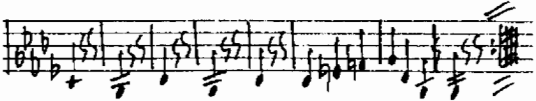
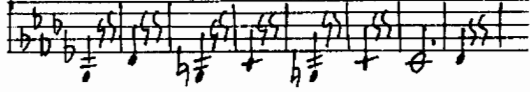
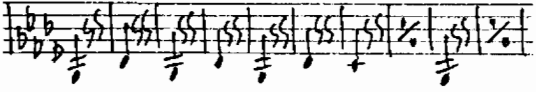
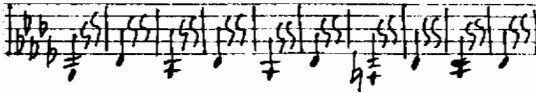
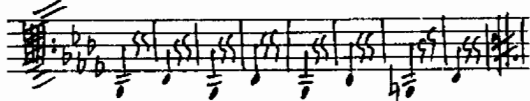
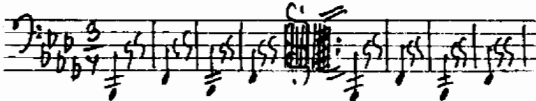


Бас 1



ВАЛЬС „РАЗБИТАЯ ЖИЗНЬ“

Бас 2



ВАЛЬС "РАЗБИТАЯ ЖИЗНЬ"  
М. КЮСС

КЛАРКЕТ 1

Handwritten musical score for Clarinet 1, left page. The score consists of seven staves of music. The key signature is B-flat major (two flats) and the time signature is 3/4. The music features a variety of rhythmic patterns, including eighth and sixteenth notes, and rests. There are several dynamic markings, including *p* (piano) and *ff* (fortissimo). The score includes first and second endings, indicated by '1' and '2' above the notes. The piece concludes with a double bar line and repeat dots.

Handwritten musical score for Clarinet 1, right page. The score consists of seven staves of music. The key signature is B-flat major (two flats) and the time signature is 3/4. The music continues from the left page, featuring similar rhythmic patterns and dynamic markings. There are several dynamic markings, including *p* (piano) and *ff* (fortissimo). The score includes first and second endings, indicated by '1' and '2' above the notes. The piece concludes with a double bar line and repeat dots.

# ВАЛЬС „РАЗБИТАЯ ЖИЗНЬ“

М. КЮСС

Handwritten musical score for the first system of the waltz "Broken Life" by M. Küss. The score is written on a grand staff (treble and bass clefs) in B-flat major and 3/4 time. It begins with a key signature change from B-flat to B-natural. The first staff contains a complex rhythmic introduction with many beamed notes and rests. The second staff starts with a half note followed by a quarter note, then continues with a melodic line. The third staff continues the melodic line with a fermata over the final note. The fourth staff features a series of eighth notes. The fifth staff has a melodic line with a first and second ending bracketed. The sixth staff continues the melodic line with a fermata.

# КЛАРИНЕТ 2

Handwritten musical score for the second system of the waltz "Broken Life" for Clarinet 2. The score is written on a single staff in B-flat major and 3/4 time. It begins with a first ending bracket. The second staff has a first ending bracket and a double bar line. The third staff continues the melodic line. The fourth staff has a first ending bracket. The fifth staff features a series of eighth notes. The sixth staff has a first ending bracket. The seventh staff continues the melodic line with a first ending bracket. The eighth staff concludes the piece with a double bar line.

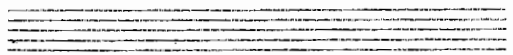
# ВАЛЬС „РАЗБИТАЯ ЖИЗНЬ“

М. КЮСС

Handwritten musical score for the first part of the waltz "Разбитая жизнь" by M. Küss. It consists of ten staves of music in G-flat major and 3/4 time. The score includes various musical notations such as notes, rests, slurs, and dynamic markings like "p" and "f". There are also some handwritten annotations and a double bar line with repeat signs at the end of the first staff.

# Корнет 1

Handwritten musical score for the first horn part of the waltz "Разбитая жизнь" by M. Küss. It consists of six staves of music in G-flat major and 3/4 time. The score includes various musical notations such as notes, rests, slurs, and dynamic markings like "p" and "f". There are also some handwritten annotations and a double bar line with repeat signs at the end of the first staff.



ВАЛЬС „РАЗБИТАЯ  
ЖИЗНЬ“ М. КЮСС

Корнет 2

Handwritten musical score for the first system, consisting of 10 staves of music. The key signature is G-flat major (two flats) and the time signature is 3/4. The notation includes various rhythmic values, slurs, and dynamic markings such as 'p' (piano). The music features a mix of eighth and sixteenth notes, often beamed together, and includes some complex rhythmic patterns.

Handwritten musical score for the second system, consisting of 10 staves of music. The key signature is G-flat major (two flats) and the time signature is 3/4. The notation includes various rhythmic values, slurs, and dynamic markings such as 'p' (piano). The music features a mix of eighth and sixteenth notes, often beamed together, and includes some complex rhythmic patterns. A large measure rest of 16 measures is indicated at the beginning of the system.

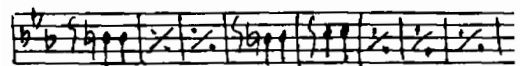
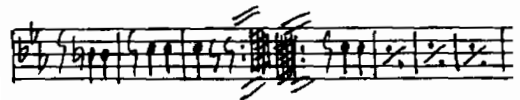
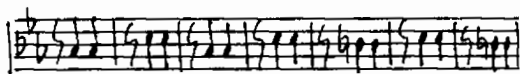
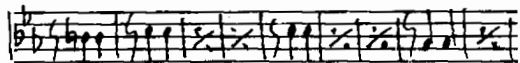
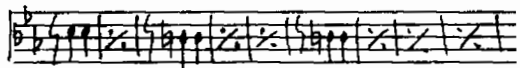
ВАЛЬС „РАЗБИТАЯ ЖИЗНЬ“

ТЕНОР 1

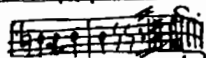
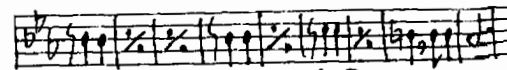
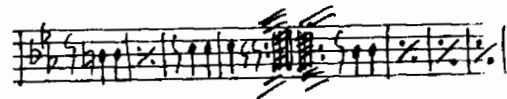
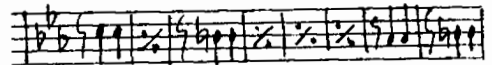
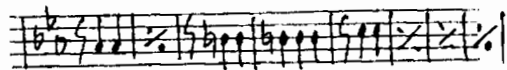
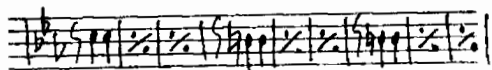
Handwritten musical score for Tenor 1, left column. It consists of seven staves of music. The key signature is two flats (B-flat and E-flat), and the time signature is 3/4. The first staff begins with a treble clef and a dynamic marking of *f*. The second staff has a dynamic marking of *p*. The third staff contains a triplet of eighth notes. The fourth staff also contains a triplet of eighth notes. The fifth staff features a quintuplet of eighth notes. The sixth staff has first and second endings marked with '1' and '2'. The seventh staff continues the melodic line.

Handwritten musical score for Tenor 1, right column. It consists of seven staves of music. The key signature is two flats (B-flat and E-flat), and the time signature is 3/4. The first staff has a first ending marked with '1'. The second staff has a second ending marked with '2'. The third staff has a first ending marked with '1'. The fourth staff has a first ending marked with '1'. The fifth staff has a first ending marked with '1'. The sixth staff has first and second endings marked with '1' and '2'. The seventh staff has first and second endings marked with '1' and '2'.

ВАЛЬС „РАЗБИТАЯ ЖИЗНЬ“



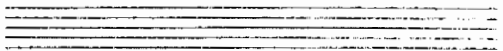
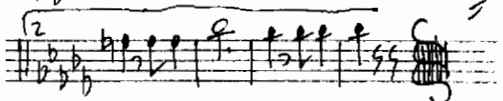
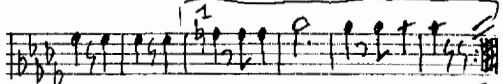
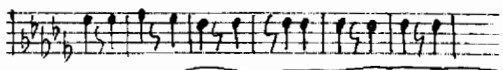
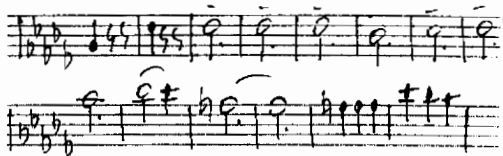
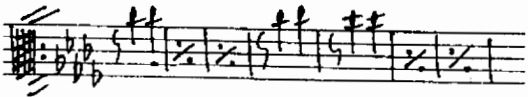
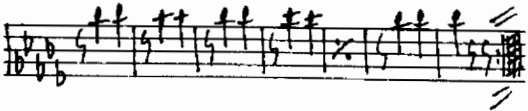
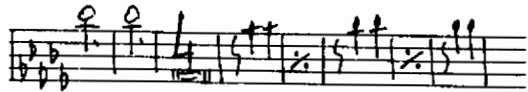
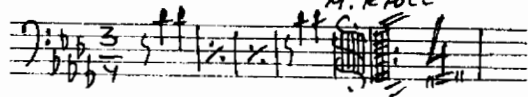
ТЕКОР 2



# ВАЛЬС „РАЗБИТАЯ ЖИЗНЬ“

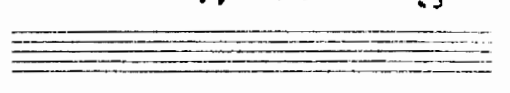
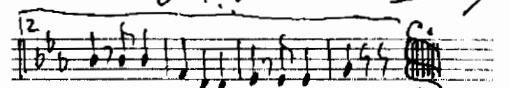
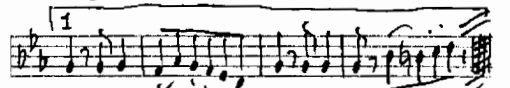
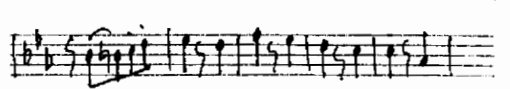
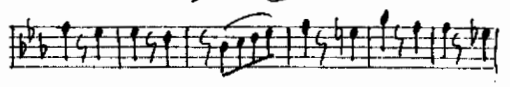
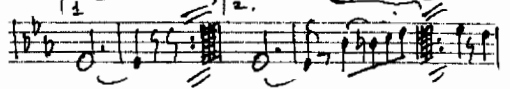
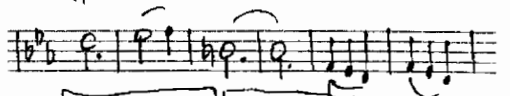
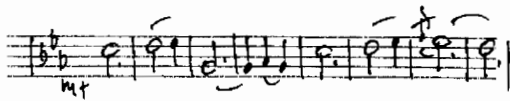
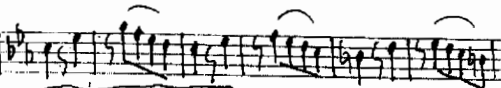
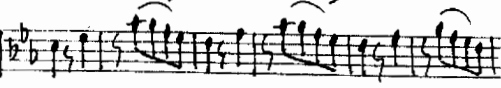
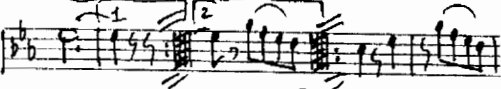
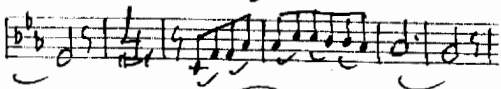
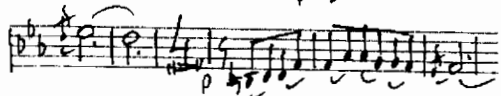
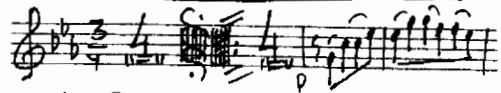
М. КЮСС

Тромбон



# Вальс „РАЗБИТАЯ ЖИЗНЬ“

Труба



ВАЛС «РАЗБИТАЯ ЖИЗНЬ» ФЛЮТА