

# ПЬЕСЫ

## На горе было, горе

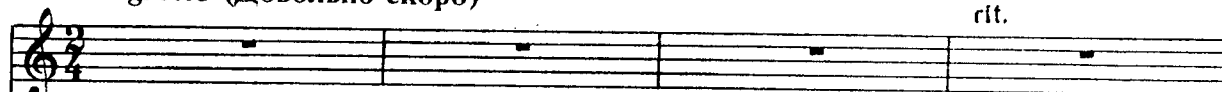
Русская народная песня

Обработка А. Шалова

Allegretto (Довольно скоро)

rit.

Балалайка



Фортепиано

Meno mosso (Медленнее)

poco a poco accelerando

The first system consists of a single treble clef staff and a grand staff. The treble staff contains a melodic line with fingerings: 6, 2, 1, 4, 1, 4, 3, 2, 6, 1, 3, 2, 1, 3, 2. The grand staff (treble and bass clefs) contains a piano accompaniment marked *pp*.

The second system consists of a single treble clef staff and a grand staff. The treble staff contains a melodic line with fingerings: 6, 2, 1, 4, 1, 4, 4, 1, 4, 1, 3, 4. The grand staff contains a piano accompaniment.

The third system consists of a single treble clef staff and a grand staff. The treble staff contains a melodic line with fingerings: 2, 2, 3, 2, 3, 1, 4, 2, 3, 3, 1, 2, 3. The grand staff contains a piano accompaniment with second fingerings (II) indicated in two places.

The fourth system consists of a single treble clef staff and a grand staff. The treble staff contains a melodic line with fingerings: 4, 3, 3, 2, 1, 1, 3, 2, 1, 3, 0, 2, 3, 1, 3. The grand staff contains a piano accompaniment with second fingerings (II) indicated in two places. The system concludes with a fermata over the final note.

a tempo

Lento (Медленно)

Allegro (Быстро)