

Марш СУДЬБА

53

5

13

22

29

35

39

46

53

1

2

3

1.

2.

1.

2.

3

3

3

3

2

2

3

2

3

Конец Трио

Кларнет В.1

55

3 3

58

4

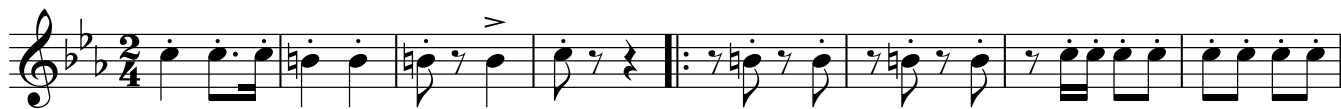
69

1. 2.

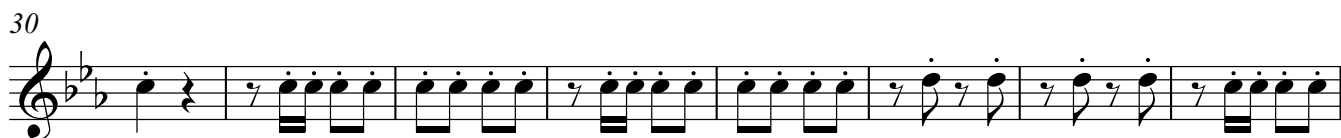
Марш СУДЬБА

1

♩



2



1.

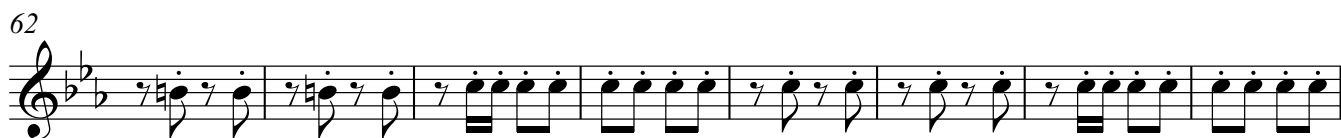
2.

3

Конец трио



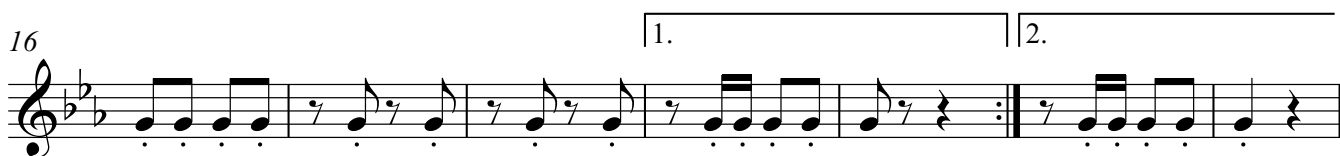
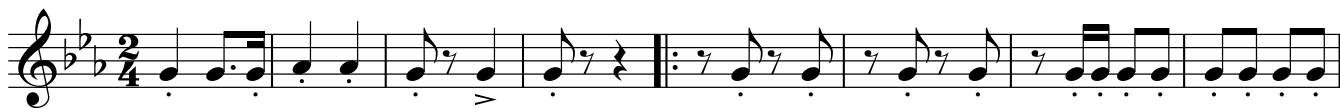
4



Марш СУДЬБА

1

§



2



1.

2.

3

Конец Трио



4



2

Horn in E \flat

65



1. 2.

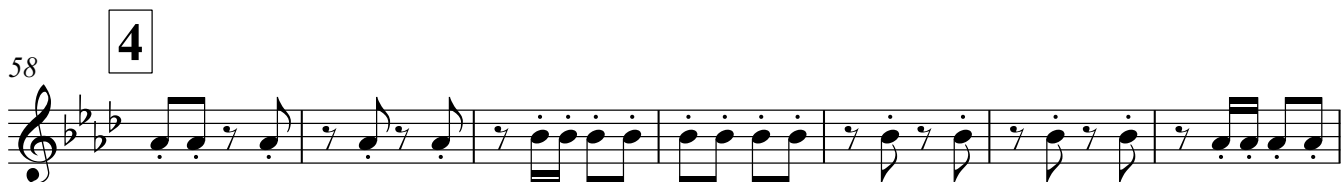
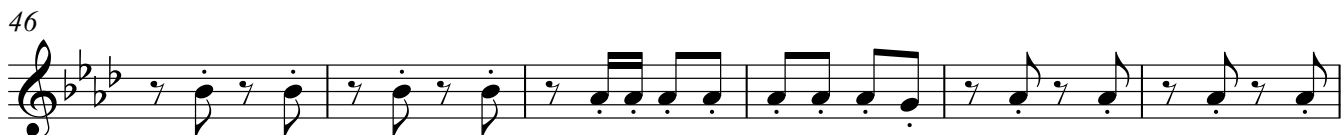
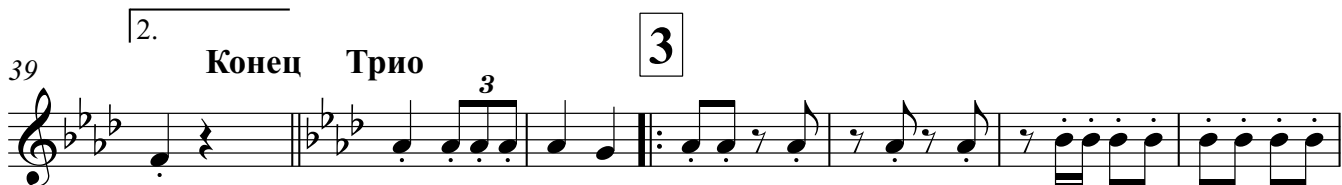
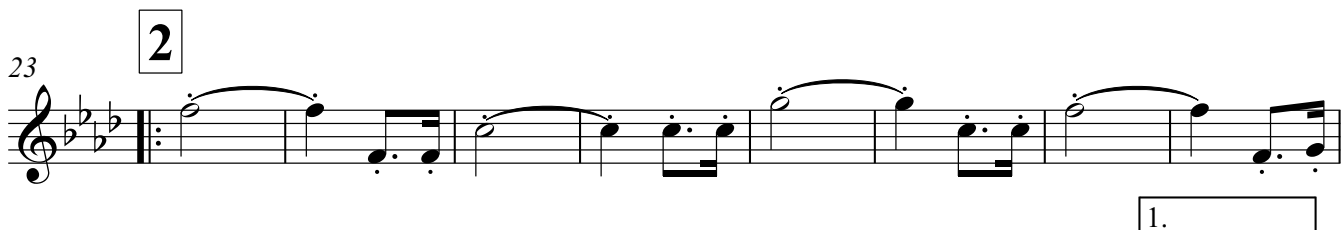
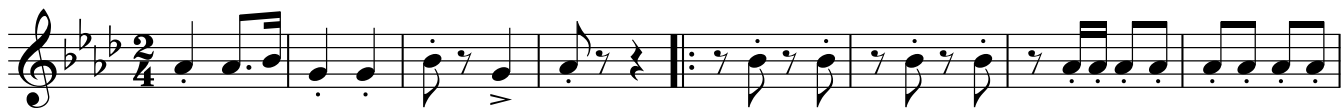
71



Марш СУДЬБА

1

§



65



1. | 2.

71



Марш СУДЬБА

8

1

9

16

1.

2.

23

2

30

1.

2.

36

Конец

40

Трио

3

14

3

3

58

4

68

1.

2.

Марш СУДЬБА

8 1

9

18 1. 2. 2

26

33 1.

39 2. **Конец Трио** 3

58 4

68 1. 2.

Марш СУДЬБА

§

1

10

19 1. 2. 2

28 1. 2.

36 Конец

40 Трио 3

49

58 4

67

2

72

1.

2. Баритон В

The musical notation is written on a single staff in treble clef with a key signature of two flats (B-flat and E-flat). The first ending (1.) consists of four measures: a quarter note G4, a quarter note F4, a quarter note E4, and a quarter note D4. The second ending (2.) consists of four measures: a quarter note D4 with a fermata, a quarter rest, a quarter note E4 with an accent (>), a quarter note F4, a quarter note G4, a quarter note F4, a quarter note E4, a quarter note D4, a quarter rest, and a final quarter rest.

Марш СУДЬБА

§

1



9



16

1. | 2.



23

2



1.

31



2.

39

Конец Трио

3



46



54

4



62



2

69

Басы 1,2

The image shows a musical score for a bass clef instrument. The key signature has three flats (B-flat, E-flat, A-flat), and the time signature is 2/4. The notation consists of two systems. The first system contains the first ending, which is a sequence of notes: G2, F2, E2, D2, C2, B1, A1, G1, F1, E1, D1, C1. The second system contains the second ending, which is a sequence of notes: G2, F2, E2, D2, C2, B1, A1, G1, F1, E1, D1, C1. The first ending is marked with a first ending bracket and a first ending repeat sign. The second ending is marked with a second ending bracket and a second ending repeat sign. The notation is written in a bass clef with a key signature of three flats and a time signature of 2/4.