

ТАНГО

муз. Г. Пономаренко
инстр. А. Школяр

$\text{♩} = 110$
f

1
mf

2
mf

3
f

4

p

ТАНГО

муз. Г. Пономаренко
инстр. А. Школяр

$\text{♩} = 110$
f

1
mf

2
mf

3
f

4

p

ТАНГО

муз. Г. Пономаренко
инстр. А. Школяр

$\text{♩} = 110$
f

1
mf

2
mf

3
f

4
p

Alto Saxophone 1

ТАНГО

муз. Г. Пономаренко
инстр. А. Школяр

$\text{♩} = 110$
f

1
mf

2
mf

3
f

4
p

ТАНГО

муз. Г. Пономаренко
инстр. А. Школяр

$\text{♩} = 110$

f

1

mf

2

mf

3

f

4

p

Trumpet B \flat

ТАНГО

муз. Г. Пономаренко
инстр. А. Школяр

$\text{♩} = 110$

f

1

mf

mf

2

f

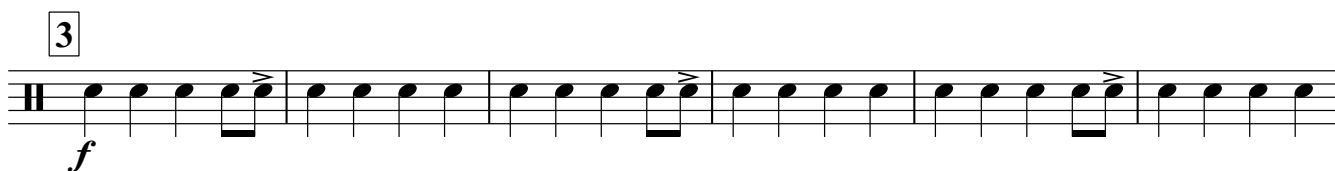
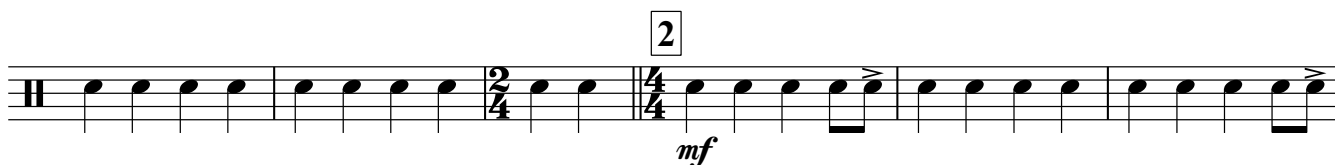
3

4

ТАНГО

муз. Г. Пономаренко
инстр. А. Школяр

$\text{♩} = 110$



ТАНГО

муз. Г. Пономаренко
инстр. А. Школяр

$\text{♩} = 110$

First staff of music, 4/4 time signature, starting with a forte (*f*) dynamic marking. The notation includes a series of rests followed by a quarter note on the second line, a quarter rest, and a quarter note on the second line.

1

First measure of the first section, marked with a mezzo-forte (*mf*) dynamic. The notation shows a series of eighth notes in a 4/4 time signature.

2

Second measure of the first section, marked with a mezzo-forte (*mf*) dynamic. The notation shows a series of eighth notes in a 4/4 time signature.

Third measure of the first section, marked with a mezzo-forte (*mf*) dynamic. The notation shows a series of eighth notes in a 4/4 time signature.

3

Fourth measure of the first section, marked with a forte (*f*) dynamic. The notation shows a series of eighth notes in a 4/4 time signature.

4

Fifth measure of the first section, marked with a forte (*f*) dynamic. The notation shows a series of eighth notes in a 4/4 time signature.

ТАНГО

муз. Г. Пономаренко
инстр. А. Школяр

$\text{♩} = 110$

f

1

mf

mf

2

f

3

4

ТАНГО

муз. Г. Пономаренко
инстр. А. Школяр

$\text{♩} = 110$

f

1

mf

mf

2

f

3

4

ТАНГО

муз. Г. Пономаренко
инстр. А. Школяр

$\text{♩} = 110$

f

1

mf

2

f

f

3

f

4

f

f

ТАНГО

муз. Г. Пономаренко
инстр. А. Школяр

$\text{♩} = 110$

f

1

mf

2

3

f

4

ТАНГО

муз. Г. Пономаренко
инстр. А. Школяр

$\text{♩} = 110$

f

1

mf

2

f

3

4

ТАНГО

муз. Г. Пономаренко
инстр. А. Школяр

$\text{♩} = 110$

f

1

mf

2

f

3

4

ТАНГО

муз. Г. Пономаренко
инстр. А. Школяр

$\text{♩} = 110$

f

mf

1

2

f

3

4

ТАНГО

муз. Г. Пономаренко
инстр. А. Школяр

$\text{♩} = 110$

First musical staff in bass clef, 4/4 time signature, key of B-flat major. It begins with a dynamic marking of *f* and contains four measures of music.

1

Second musical staff in bass clef, 4/4 time signature, key of B-flat major. It begins with a dynamic marking of *mf* and contains four measures of music.

2

Third musical staff in bass clef, 4/4 time signature, key of B-flat major. It contains four measures of music.

Fourth musical staff in bass clef, 4/4 time signature, key of B-flat major. It contains four measures of music.

3

Fifth musical staff in bass clef, 4/4 time signature, key of B-flat major. It begins with a dynamic marking of *f* and contains four measures of music.

4

Sixth musical staff in bass clef, 4/4 time signature, key of B-flat major. It contains four measures of music, ending with a double bar line.