

# ВЕСЕЛЫЙ ДЕНЬ

## Фокстрот

Умеренно (♩ = 120)

*loco*

Акордеон (Баян)

Гитара I

Гитара II

Контрабас

\*) 1

\*) В записи (на CD) это произведение начинается с 5-го такта.

Вступление восстановлено по клавиру ("Играй, мой баян", вып. 7, Воениздат МО СССР, Москва, 1959 г.).

При повторе:

mp

G B7 Em B7

G B7 Em B7

Em E7

Em B7 E7

1. 2. *accel.*

A7 A

A7 A

2 Allegro

8

Musical score system 1, measures 8-11. The system consists of four staves: a vocal line and three piano accompaniment staves. The key signature is two sharps (F# and C#), and the time signature is 4/4. The tempo is marked 'Allegro' and the dynamics are 'mp'. The piano accompaniment features a steady eighth-note bass line in the left hand and chords in the right hand. The vocal line has a melodic line with some grace notes.

Chords: D, E7



Musical score system 2, measures 12-15. The system consists of four staves: a vocal line and three piano accompaniment staves. The key signature is two sharps (F# and C#), and the time signature is 4/4. The piano accompaniment features a steady eighth-note bass line in the left hand and chords in the right hand. The vocal line continues the melodic line.

Chords: A7, D, Dm, A7



Musical score system 3, measures 16-19. The system consists of four staves: a vocal line and three piano accompaniment staves. The key signature is two sharps (F# and C#), and the time signature is 4/4. The piano accompaniment features a steady eighth-note bass line in the left hand and chords in the right hand. The vocal line includes a triplet in measure 17.

Chords: D7, G, Gm

Musical score for the first system, featuring a melody and accompaniment. The key signature is two sharps (F# and C#). The melody is written in the treble clef. The accompaniment consists of two staves in the treble clef and one staff in the bass clef. Chords are indicated as D, Dm, A7, and E7. A double bar line is present at the end of the system.

Musical score for the second system, starting with a '3 loco' instruction. The key signature is two sharps (F# and C#). The melody is written in the treble clef. The accompaniment consists of two staves in the treble clef and one staff in the bass clef. Chords are indicated as A, E7+5, and Bm7. Dynamics include *mf* and *f*. A double bar line is present at the end of the system.

Musical score for the third system, featuring chords A7 and D. The key signature is two sharps (F# and C#). The melody is written in the treble clef. The accompaniment consists of two staves in the treble clef and one staff in the bass clef. A double bar line is present at the end of the system.

Musical score system 1, measures 1-3. The key signature is two sharps (F# and C#). The first staff contains a melodic line with a triplet of eighth notes in measures 1 and 3. The second and third staves contain accompaniment with chords Dm and A. The fourth staff is the bass line.



Musical score system 2, measures 4-6. The key signature is two sharps. The first staff contains a melodic line with accents and a dynamic marking of *f*. The second and third staves contain accompaniment with chords F#7, B9, and E7. The fourth staff is the bass line.



Musical score system 3, measures 7-9. A box containing the number "4" is positioned above the first staff. The first staff contains a melodic line with a crescendo hairpin and a dynamic marking of *mp*. The second and third staves contain accompaniment with chords A. The fourth staff is the bass line with a dynamic marking of *mf* and the word "Solo" above it.

Musical score system 1, featuring four staves. The top three staves are treble clefs, and the bottom staff is a bass clef. The key signature is two sharps (F# and C#). The first two staves have rests in the first two measures, followed by chords labeled D<sup>9</sup> and Dm9 in the third and fourth measures respectively. The bass staff contains a melodic line of eighth notes.



Musical score system 2, featuring four staves. The top three staves are treble clefs, and the bottom staff is a bass clef. The key signature is two sharps. The first two staves have rests in the first two measures, followed by a melodic line in the third and fourth measures. The second staff has a dynamic marking *mp* and a crescendo hairpin. The third staff has chords labeled A<sup>7</sup>, A<sup>9</sup>, and D, with a *simile* marking and a crescendo hairpin. The bass staff contains a melodic line of eighth notes.



Musical score system 3, featuring four staves. The top three staves are treble clefs, and the bottom staff is a bass clef. The key signature is two sharps. The first two staves have rests in the first two measures, followed by a melodic line in the third and fourth measures. The second staff has a dynamic marking *f* and a crescendo hairpin. The third staff has chords labeled B<sup>7</sup> and E<sup>7</sup>, with a *gliss.* marking and a crescendo hairpin. The bass staff contains a melodic line of eighth notes.

5

Musical score for the first system, measures 1-4. The key signature is two sharps (F# and C#). The first staff (treble clef) starts with a piano (*p*) dynamic, followed by a mezzo-forte (*mf*) dynamic. The second staff (treble clef) starts with a mezzo-piano (*mp*) dynamic, followed by a mezzo-forte (*mf*) dynamic. The third staff (treble clef) contains chord symbols: A, E7, E7<sup>9</sup>, A, and E7. The fourth staff (bass clef) contains a bass line with quarter notes and rests.



Musical score for the second system, measures 5-8. The key signature is two sharps (F# and C#). The first staff (treble clef) contains melodic lines with triplets and accents. The second staff (treble clef) contains chord symbols: A, E7, and A<sup>9</sup>. The third staff (treble clef) contains chord symbols: A, E7, and A<sup>9</sup>. The fourth staff (bass clef) contains a bass line with quarter notes and rests.



Musical score for the third system, measures 9-12. The key signature is two sharps (F# and C#). The first staff (treble clef) contains melodic lines with triplets. The second staff (treble clef) contains chord symbols: D, Dm, A, and F#7. The third staff (treble clef) contains a bass line with eighth notes and rests, with the word *simile* written above it. The fourth staff (bass clef) contains a bass line with quarter notes and rests.

Musical score system 1, measures 1-4. The key signature is two sharps (F# and C#). The first staff contains a melodic line with a crescendo hairpin. The second and third staves contain chords labeled B7 and E7. The fourth staff is the bass line.



6

Musical score system 2, measures 5-8. The key signature is two sharps. The first staff starts with a melodic line marked *mp*. The second and third staves contain chords labeled A and F#7. The word *simile* is written above the third staff. The fourth staff is the bass line.



1.

Musical score system 3, measures 9-12. The key signature is two sharps. The first staff contains a melodic line with a first ending bracket and a triplet. The second and third staves contain chords labeled B7 and E7. The fourth staff is the bass line.

2.

B7 E7 A A7

B7 A A7



7

*mf* D Em A7 D Em A7

D Em A7 D *simile* Em A7

*mf*



D7 G B7

D7 G B7

Musical score for the first system, measures 1-4. The key signature is one sharp (F#) and the time signature is 4/4. The score consists of four staves: a single treble clef staff at the top, and three grand staff systems (treble and bass clefs) below. The first staff contains a melodic line with accents and a dynamic marking of *p*. The second and third staves contain a guitar accompaniment with chords Em and B7. The fourth staff contains a bass line.



Musical score for the second system, measures 5-8. The key signature is one sharp (F#) and the time signature is 4/4. The score consists of four staves: a single treble clef staff at the top, and three grand staff systems below. The first staff contains a melodic line with a triplet of eighth notes in measure 7 and a dynamic marking of *p*. The second and third staves contain a guitar accompaniment with chords E7 and A7. The fourth staff contains a bass line.

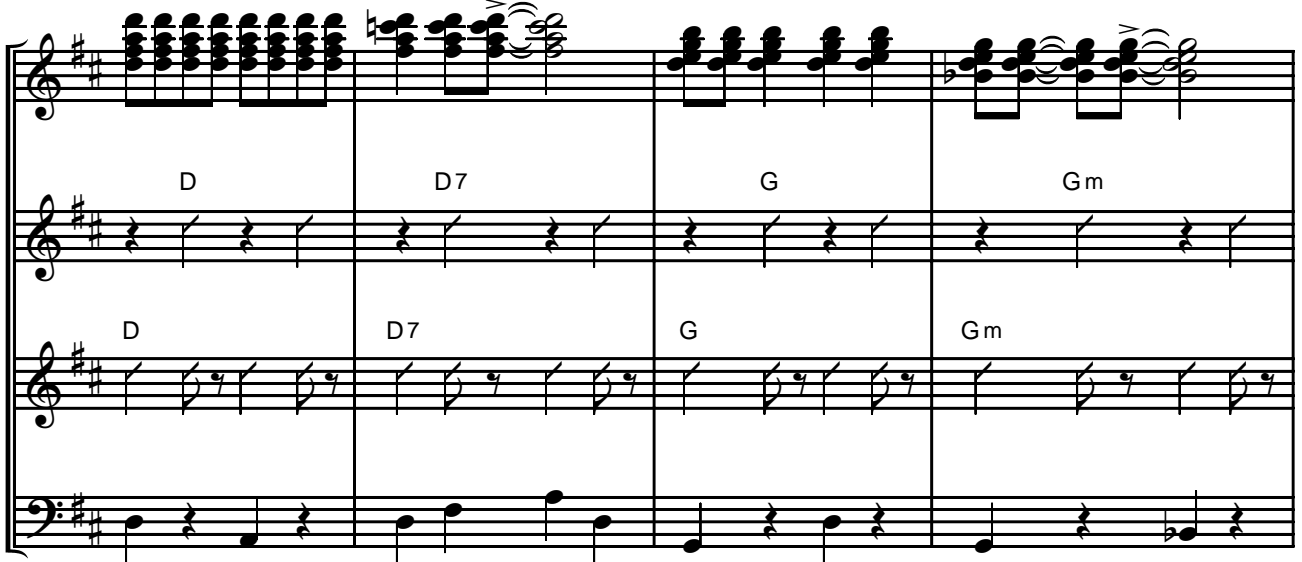


8

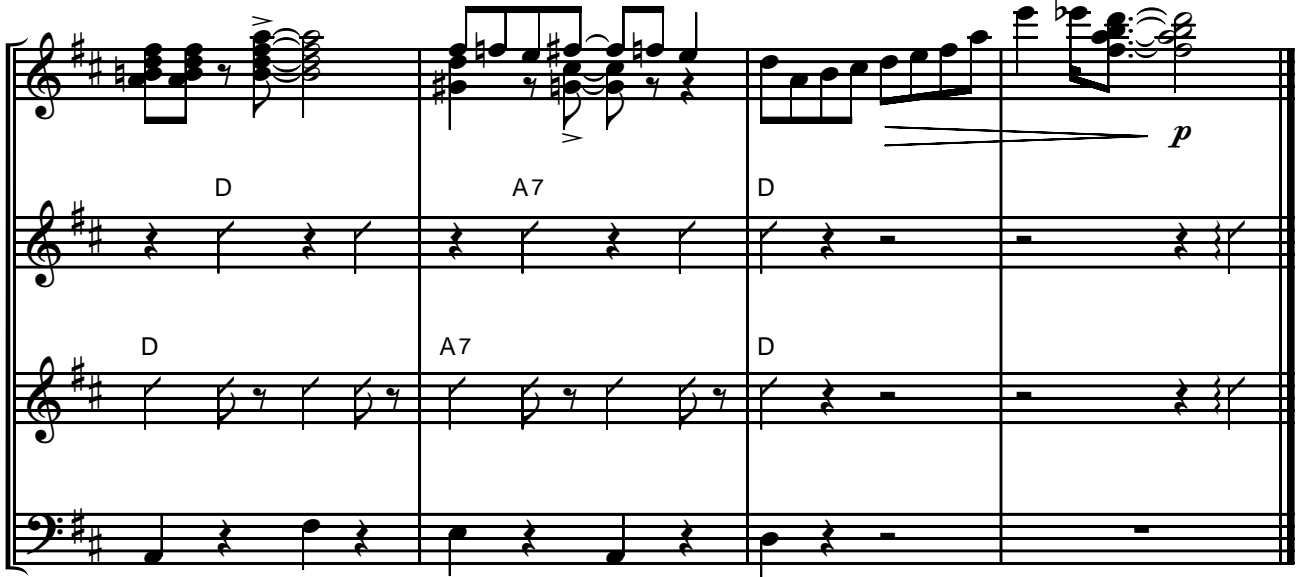
Musical score for the third system, measures 9-12. The key signature is one sharp (F#) and the time signature is 4/4. The score consists of four staves: a single treble clef staff at the top, and three grand staff systems below. The first staff contains a melodic line with a dynamic marking of *mf*. The second and third staves contain a guitar accompaniment with chords D, E<sup>9</sup><sub>7</sub>, and E7, and a *simile* marking. The fourth staff contains a bass line.



Musical score system 1, consisting of four staves. The top staff contains a melodic line with various notes and rests. The second and third staves contain a rhythmic accompaniment with chords labeled A7 and D. The bottom staff contains a bass line. The system is divided into four measures.



Musical score system 2, consisting of four staves. The top staff contains a melodic line with various notes and rests. The second and third staves contain a rhythmic accompaniment with chords labeled D, D7, G, and Gm. The bottom staff contains a bass line. The system is divided into four measures.



Musical score system 3, consisting of four staves. The top staff contains a melodic line with various notes and rests. The second and third staves contain a rhythmic accompaniment with chords labeled D and A7. The bottom staff contains a bass line. The system is divided into four measures. A dynamic marking *p* is present in the third measure of the top staff.

Аkkордеон (Баян)

# ВЕСЕЛЫЙ ДЕНЬ

Фокстрот

Умеренно (♩ = 120)

*loco*

Аkkордеон  
(Баян)

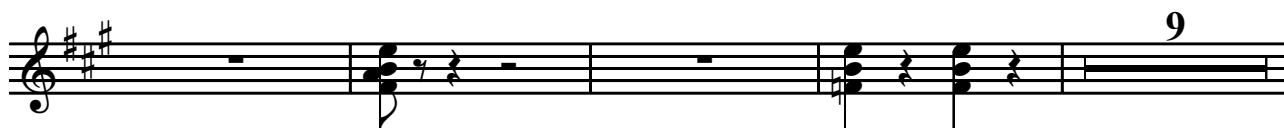
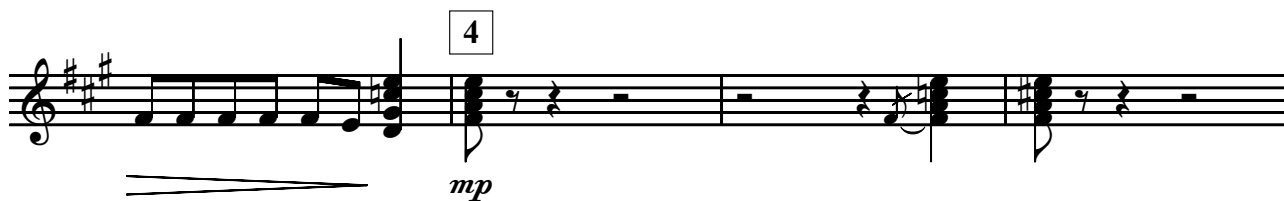
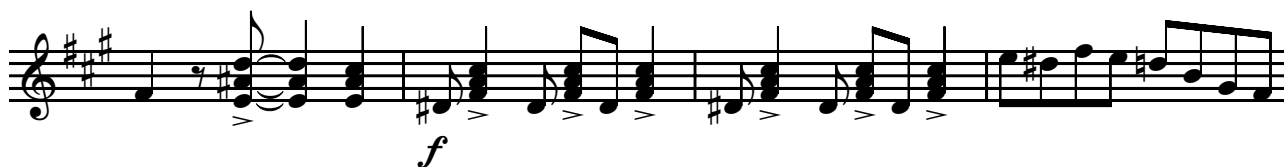
*f*

1

2 Allegro

8

# Акордеон (Баян)



# Аккордеон (Баян)



6



1.



2.



7



# Аккордеон (Баян)



8



Гитара I  
**ВЕСЕЛЫЙ ДЕНЬ**  
 Фокстрот

Умеренно (♩ = 120)

Гитара I

D    Adim    A7                    D    Dm    E7    A7

*f*

1

D    Em    A7    D                    Em    A7    D                    D7

При повторе:

G                    B7                    Em                    B7                    Em

E7                    1. A7

2. accel.                    2 Allegro

A                    D                    E7

A7                    D    Dm    A7                    D7

G                    Gm                    D    Dm    A7                    D                    E7

3

A                    E7<sup>+5</sup>                    A                    Bm7    E7                    A7

# Гитара I

D Dm A F#7

B9 E7 A

4

D9 Dm9

*mp*

E7

5

*f* *mp* *mf*

E9 A9 D Dm

A F#7 B7 E7

6

A F#7 1. B7

E7 2. B7 E7 A A7

7

D Em A7 D Em A7 D7

# Гитара I

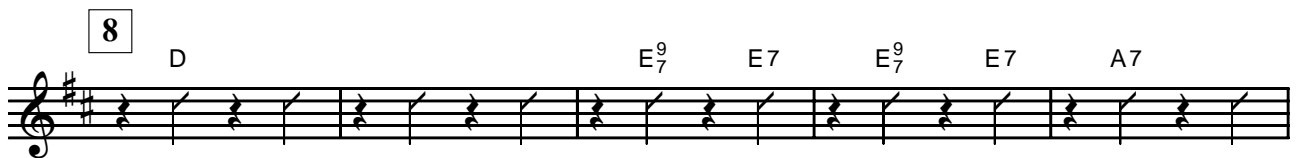
G B7 Em B7 Em B7



E7 A7



8 D E<sup>9</sup><sub>7</sub> E7 E<sup>9</sup><sub>7</sub> E7 A7



D A7 D D7



G Gm D A7 D



Гитара II

# ВЕСЕЛЫЙ ДЕНЬ

Фокстрот

Умеренно (♩ = 120)

Гитара II

D Adim A7 simile D Dm E7 A7

*f*

1

D Em A7 D Em A7

D D7 G B7

Em B7 Em B7

E7 1. A7

2. accel. 2 Allegro

A D E7

*mp*

A7 D Dm

A7 D7 G

Gm D Dm A7 D E7



# Гитара II

1. B7 E7

2. B7 A A7

7 D Em A7 D simile Em A7 D7

*mf*

G B7 Em B7

Em B7 E7

8 D simile

*mf*

E<sub>7</sub><sup>9</sup> E7 E<sub>7</sub><sup>9</sup> E7 A7 D

A7 D D7 G

Gm D A7 D

Контрабас

# ВЕСЕЛЫЙ ДЕНЬ

Фокстрот

Умеренно (♩ = 120)

Контрабас



1



1.

2. accel.



2 Allegro



3



4

Solo



*mf*

