

ВЕСЕЛЫЙ ДЕНЬ

Фокстрот

Умеренно (♩ = 120)

loco

Акордеон (Баян)

Гитара I

Гитара II

Контрабас

*) 1

*) В записи (на CD) это произведение начинается с 5-го такта.

Вступление восстановлено по клавиру ("Играй, мой баян", вып. 7, Воениздат МО СССР, Москва, 1959 г.).

При повторе:

mp

G B7 Em B7

G B7 Em B7

Em E7

Em B7 E7

1. 2. accel.

A7 A

A7 A

2 Allegro

8

Musical score system 1, measures 8-11. The system consists of four staves. The top staff is the melody, starting with a treble clef, a key signature of two sharps (F# and C#), and a common time signature. It begins with a dynamic marking of *mp* and a fermata over the first note. The second and third staves are accompaniment, with the third staff also marked *mp*. The fourth staff is the bass line. Chord symbols D and E7 are placed above the second and third staves respectively. The system is separated from the next by a double bar line.

Musical score system 2, measures 12-15. The system consists of four staves. The top staff is the melody, starting with a treble clef, a key signature of two sharps, and a common time signature. The second and third staves are accompaniment. Chord symbols A7, D, Dm, and A7 are placed above the second and third staves. The system is separated from the next by a double bar line.

Musical score system 3, measures 16-19. The system consists of four staves. The top staff is the melody, starting with a treble clef, a key signature of two sharps, and a common time signature. It features a triplet of eighth notes in measure 17. The second and third staves are accompaniment. Chord symbols D7, G, and Gm are placed above the second and third staves. The system is separated from the next by a double bar line.

Musical score for the first system, featuring a melody line and two guitar parts. The key signature is two sharps (F# and C#). The melody line consists of eighth and sixteenth notes. The guitar parts include chords: D, Dm, A7, D, and E7.

Musical score for the second system, starting with a **3 loco** instruction. The first measure has a dynamic marking of *mf*. The melody line features a triplet of eighth notes. The guitar parts include chords: A, E7⁺⁵, A, Bm7, and E7. A dynamic marking of *f* appears in the second measure of the guitar parts.

Musical score for the third system, featuring a melody line and two guitar parts. The key signature is two sharps (F# and C#). The melody line includes accents and slurs. The guitar parts include chords: A7 and D.

Musical score system 1, measures 1-3. The key signature is two sharps (F# and C#). The first staff contains a melodic line with a triplet of eighth notes in measures 1 and 3. The second and third staves contain harmonic accompaniment with chords labeled Dm and A. The fourth staff is the bass line.



Musical score system 2, measures 4-6. The key signature is two sharps. The first staff contains a melodic line with accents and a dynamic marking of *f*. The second and third staves contain harmonic accompaniment with chords labeled F#7, B9, and E7. The fourth staff is the bass line.



Musical score system 3, measures 7-9. A box containing the number "4" is positioned above the first measure. The first staff contains a melodic line with a crescendo hairpin and a dynamic marking of *mp*. The second and third staves contain harmonic accompaniment with chords labeled A. The fourth staff is the bass line, labeled "Solo" and *mf*.

Musical score system 1, featuring four staves. The top three staves are treble clefs, and the bottom staff is a bass clef. The key signature is two sharps (F# and C#). The first two staves have rests in the first two measures, then chords in the third and fourth measures. The third staff has rests in the first two measures, then chords in the third and fourth measures. The bottom staff has a melodic line starting in the first measure. Chord labels D_7^9 and $Dm9$ are present in the second and third measures.



Musical score system 2, featuring four staves. The top three staves are treble clefs, and the bottom staff is a bass clef. The key signature is two sharps (F# and C#). The first two staves have rests in the first two measures, then a melodic line in the third and fourth measures. The third staff has rests in the first two measures, then chords in the third and fourth measures. The bottom staff has a melodic line starting in the first measure. Chord labels A_7 , A_7^9 , and D are present. Dynamics include *mp* and *simile*.



Musical score system 3, featuring four staves. The top three staves are treble clefs, and the bottom staff is a bass clef. The key signature is two sharps (F# and C#). The first two staves have a melodic line in the first three measures, then rests in the fourth measure. The third staff has rests in the first three measures, then chords in the fourth measure. The bottom staff has a melodic line starting in the first measure. Chord labels B_7 and E_7 are present. Dynamics include *f* and *gliss.*

5

Musical score for the first system, measures 1-4. The key signature is two sharps (F# and C#). The first staff (treble clef) starts with a piano (*p*) dynamic and features a triplet of eighth notes in measure 4. The second staff (treble clef) starts with a mezzo-piano (*mp*) dynamic and features a mezzo-forte (*mf*) dynamic in measure 4. The third staff (treble clef) contains chord symbols: A, E7, E7⁹, A, and E7. The fourth staff (bass clef) provides a bass line.



Musical score for the second system, measures 5-8. The key signature is two sharps (F# and C#). The first staff (treble clef) features a triplet of eighth notes in measure 5. The second staff (treble clef) contains chord symbols: A, E7, and A⁹. The third staff (treble clef) contains chord symbols: A, E7, and A⁹. The fourth staff (bass clef) provides a bass line.



Musical score for the third system, measures 9-12. The key signature is two sharps (F# and C#). The first staff (treble clef) features a triplet of eighth notes in measure 9. The second staff (treble clef) contains chord symbols: D, Dm, A, and F#7. The third staff (treble clef) contains chord symbols: D, Dm, *simile*, A, and F#7. The fourth staff (bass clef) provides a bass line.

Musical score system 1, measures 1-4. The key signature is two sharps (F# and C#). The first staff contains a melodic line with a crescendo hairpin. The second and third staves contain chords labeled B7 and E7. The fourth staff is the bass line.



6

Musical score system 2, measures 5-8. The key signature is two sharps. The first staff starts with a melodic line marked *mp*. The second and third staves contain chords labeled A and F#7. The word *simile* is written above the third staff. The fourth staff is the bass line.



1.

Musical score system 3, measures 9-12. The key signature is two sharps. The first staff contains a melodic line with a first ending bracket and a triplet. The second and third staves contain chords labeled B7 and E7. The fourth staff is the bass line.

2.

B7 E7 A A7

B7 A A7



7

mf D Em A7 D Em A7

D Em A7 D *simile* Em A7

mf



D7 G B7

D7 G B7

Musical score for the first system, measures 1-4. The key signature is one sharp (F#). The first staff contains a melodic line starting with a *p* dynamic and accents. The second and third staves show a guitar accompaniment with chords Em and B7. The fourth staff is the bass line.



Musical score for the second system, measures 5-8. The key signature is one sharp (F#). The first staff features a melodic line with a triplet in measure 7. The second and third staves show guitar accompaniment with chords E7 and A7. The fourth staff is the bass line.



8

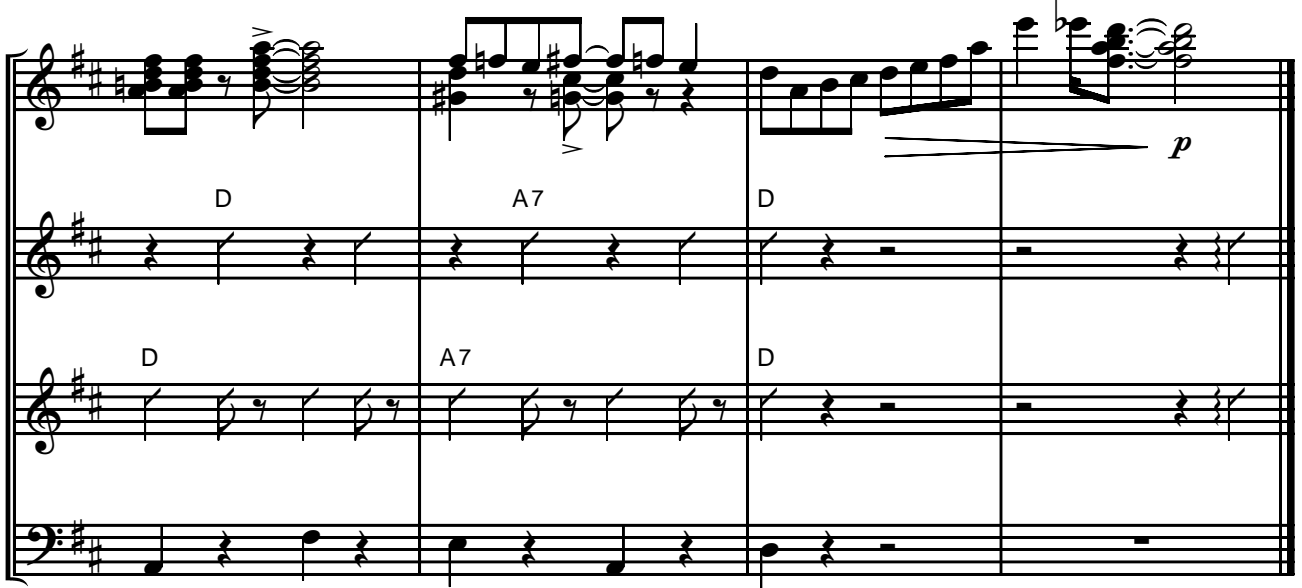
Musical score for the third system, measures 9-12. The key signature is one sharp (F#). The first staff starts with a *mf* dynamic and contains chords D, E⁹₇, E7, E⁹₇, and E7. The second staff contains chords D, E⁹₇, E7, E⁹₇, and E7. The third staff includes the instruction *simile* and chords E⁹₇, E7, E⁹₇, and E7. The fourth staff is the bass line.



Musical score system 1, consisting of four staves. The top staff contains a melodic line with various notes and rests. The second and third staves contain a rhythmic accompaniment with chords. The bottom staff contains a bass line. Chord labels are placed below the second and third staves: A7, D, and A7.



Musical score system 2, consisting of four staves. The top staff contains a melodic line with various notes and rests. The second and third staves contain a rhythmic accompaniment with chords. The bottom staff contains a bass line. Chord labels are placed below the second and third staves: D, D7, G, and Gm.



Musical score system 3, consisting of four staves. The top staff contains a melodic line with various notes and rests. The second and third staves contain a rhythmic accompaniment with chords. The bottom staff contains a bass line. Chord labels are placed below the second and third staves: D, A7, and D. A dynamic marking *p* is present in the top staff.

Аккордеон (Баян)

ВЕСЕЛЫЙ ДЕНЬ

Фокстрот

Умеренно (♩ = 120)

loco

Аккордеон
(Баян)

f

1

1.

2.

accel.

2 Allegro

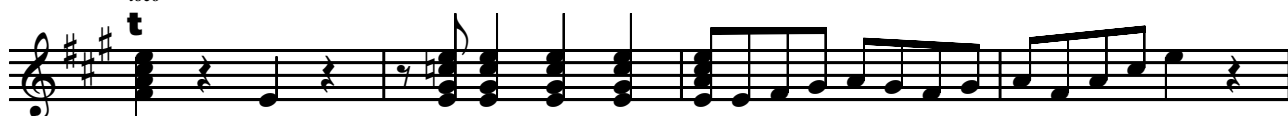
8

Акордеон (Баян)



3

loco



mf

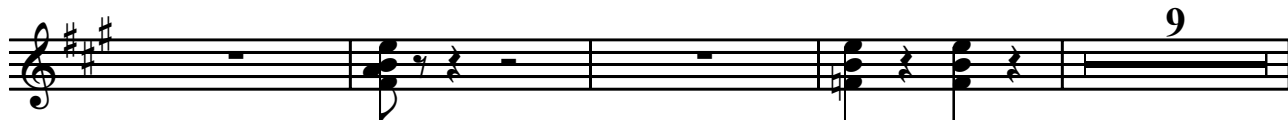


f

4



mp



9

5



p

mf

Аккордеон (Баян)



6



1.



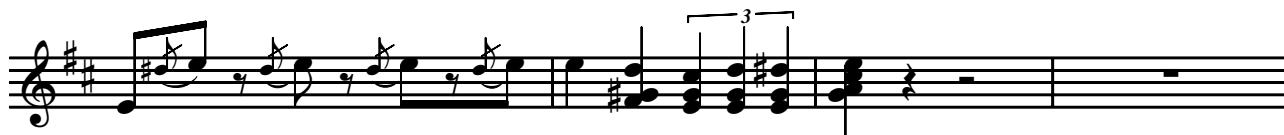
2.



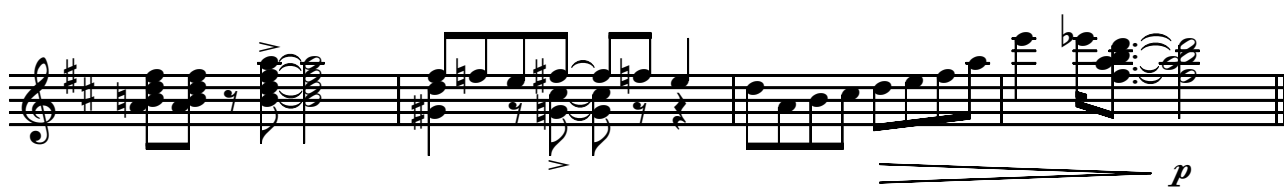
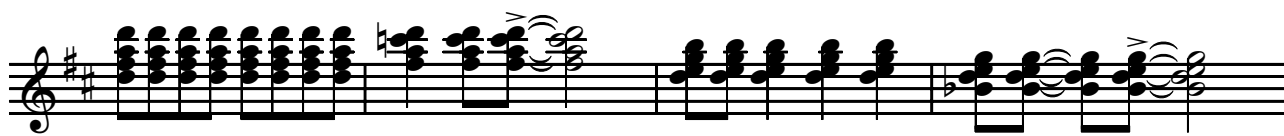
7



Аkkордеон (Баян)



8



Гитара I

ВЕСЕЛЫЙ ДЕНЬ

Фокстрот

Умеренно (♩ = 120)

Гитара I

D A^{dim} A7 D Dm E7 A7

f

1

D Em A7 D Em A7 D D7

При повторе:

G B7 Em B7 Em

E7 1. A7

2. accel. 2 Allegro

A D E7

A7 D Dm A7 D7

G Gm D Dm A7 D E7

3

A E7⁺⁵ A Bm7 E7 A7

Гитара I

D Dm A F#7

B9 E7 A

4

D9 Dm9

mp

E7

5

f *mp* *mf*

E9 A9 D Dm

A F#7 B7 E7

6 A F#7 1. B7

E7 2. B7 E7 A A7

7 D Em A7 D Em A7 D7

Гитара I

G B7 Em B7 Em B7

E7 A7

8 D E₇⁹ E7 E₇⁹ E7 A7

D A7 D D7

G Gm D A7 D

Гитара II

ВЕСЕЛЫЙ ДЕНЬ

Фокстрот

Умеренно (♩ = 120)

Гитара II

D Adim A7 simile D Dm E7 A7

f

1

D Em A7 D Em A7

D D7 G B7

Em B7 Em B7

E7 1. A7

2. accel. 2 Allegro

A D E7

mp

A7 D Dm

A7 D7 G

Gm D Dm A7 D E7

Гитара II

1. B7 E7

2. B7 A A7

7 D Em A7 D simile Em A7 D7

mf

G B7 Em B7

Em B7 E7

8 D simile

mf

E7⁹ E7 E7⁹ E7 A7 D

A7 D D7 G

Gm D A7 D

Контрабас

ВЕСЕЛЫЙ ДЕНЬ

Фокстрот

Умеренно (♩ = 120)

Контрабас



1



1.

2. accel.



2 Allegro



3



4

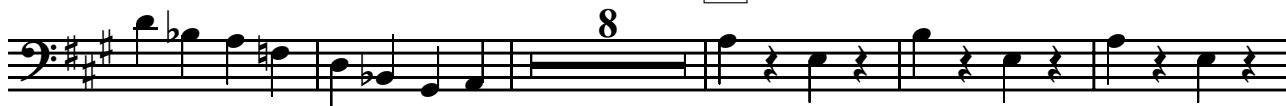
Solo



mf

Контрабас

5



6



2.



7



8

