

В лесу

Clarinet in B \flat

Старинный вальс

9 *f* *mf*

17

25

32

38

44

50

55 **Трио** *f*

64

В лесу

Clarinet in B \flat

Старинный вальс

9 *f* *mf*

17

25

32

38

46

54 **Трио** *f*

63

72

2

Clarinet in B \flat

79



В лесу

Clarinet in B \flat

Старинный вальс

9 *f* *mf*

17

25

32

38

44

49

55 **Трио** *f*

64

Clarinet in B \flat

73

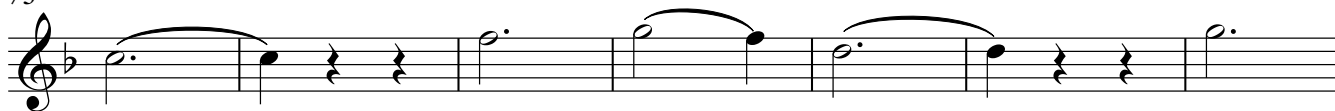


80



Alto Saxophone

73



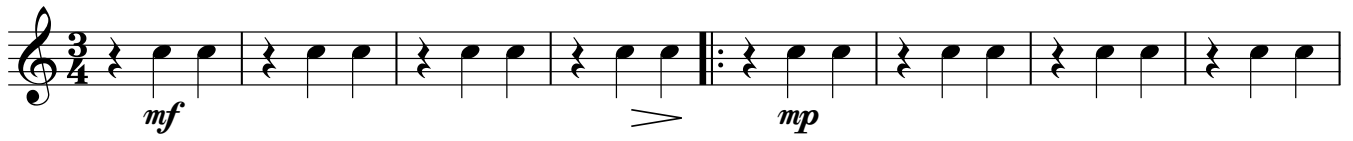
80



В лесу

Horn in E \flat

Старинный вальс



77



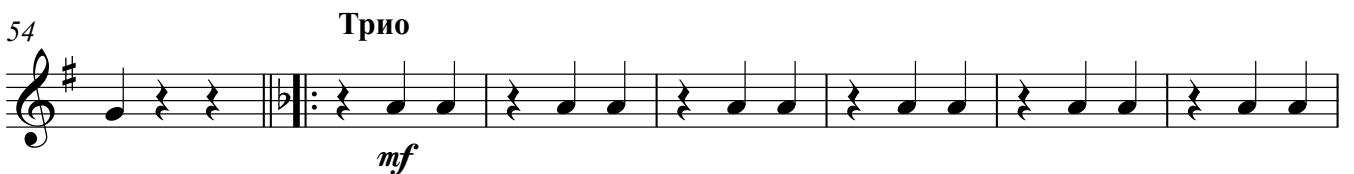
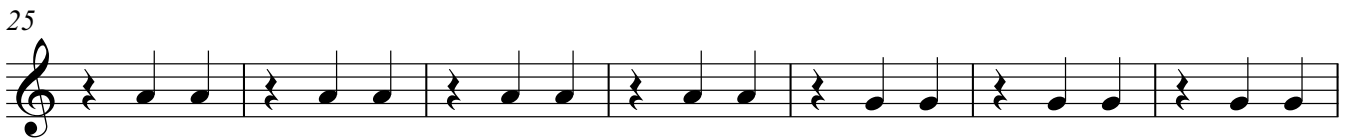
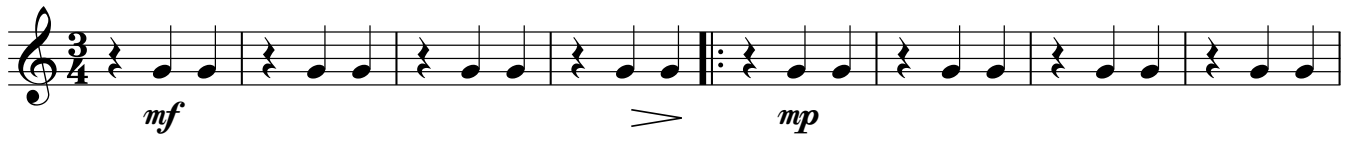
82



В лесу

Horn in E \flat

Старинный вальс



2

Horn in Eb

77



82



В лесу

Trumpet in B♭

Старинный вальс

4 23

mf

31

38

44

49

55 **Трио**

f

64

73

80

В лесу

Cornet in B \flat

Старинный вальс

4 23

mf

31

38

44

49

55 **Трио**

f

64

73

80

В лесу

Baritone

Старинный вальс

9 *f* *mf*

17

26

32

38

47

55 **Трио** *f*

64

73

2

Baritone

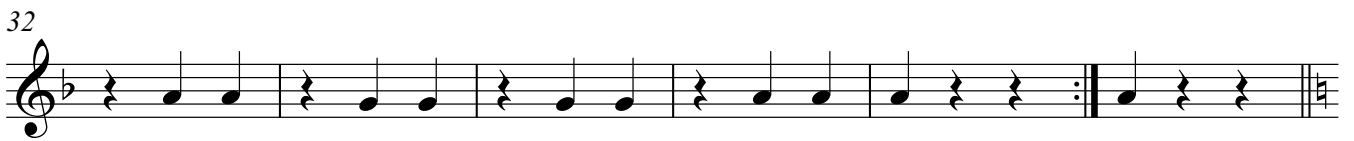
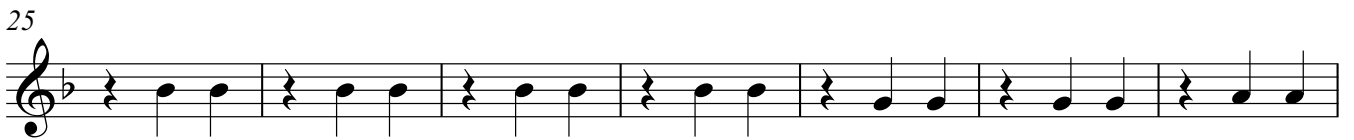
80



Baritone

В лесу

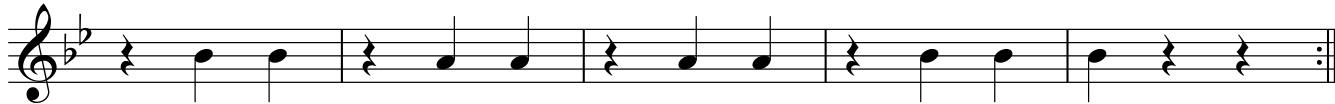
Старинный вальс



77



82



В лесу

Baritone

Старинный вальс

9 *f* *mf*

17

26

35

43

52 **Трио** *f*

60

69

78

Trombone

В лесу

Старинный вальс

mf > *mp*

9

17

25

32

38

46

54

Трио

mf

61

69

2

Trombone

77

Musical staff for Trombone, measures 77-81. The staff is in bass clef with a key signature of two flats (B-flat and E-flat). The music consists of five measures, each containing a pair of eighth notes. The notes in each measure are: G2 (one flat), G2 (one flat); A2 (two flats), A2 (two flats); B2 (two flats), B2 (two flats); C3 (three flats), C3 (three flats); and D3 (three flats), D3 (three flats).

82

Musical staff for Trombone, measures 82-86. The staff is in bass clef with a key signature of two flats (B-flat and E-flat). The music consists of five measures. The first four measures each contain a pair of eighth notes: G2 (one flat), G2 (one flat); A2 (two flats), A2 (two flats); B2 (two flats), B2 (two flats); and C3 (three flats), C3 (three flats). The fifth measure contains two quarter notes: G2 (one flat) and G2 (one flat). The staff ends with a double bar line and repeat dots.

В лесу

Trombone

Старинный вальс

mf > *mp*

9

17

25

32

38

46

54

Трио

mf

61

69

Trombone

В лесу

Старинный вальс

9

17

25

32

38

46

54

Трио

61

61

69

2

Trombone

77



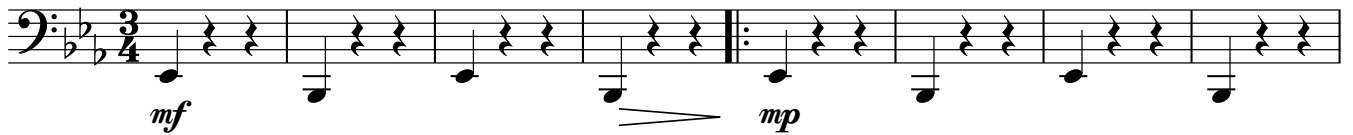
82



В лесу

Tuba

Старинный вальс



9



17



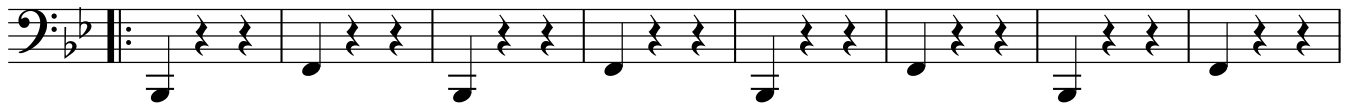
25



32



38

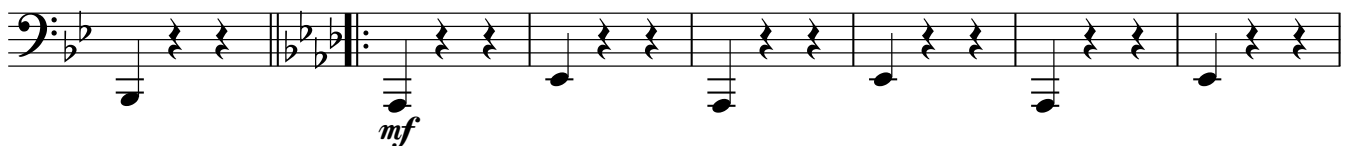


46

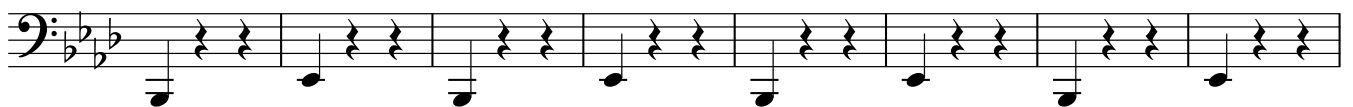


54

Трио



61



69



V.S.

2

Tuba

77



82



Snare Drum

В лесу

Старинный вальс

3/4 *mf* > *mp*

9

17

25

32

38

46

54 **Трио**

61

69

Snare Drum

77



82



Snare Drum

В лесу

Старинный вальс

3/4 *mf* *mp*

9

17

25

32

38

46

54 **Трио**

61

69

Snare Drum

77

Musical notation for Snare Drum, measures 77-81. Each measure contains a quarter note followed by two eighth notes, all with upward-pointing stems and flags.

82

Musical notation for Snare Drum, measures 82-86. Each measure contains a quarter note followed by two eighth notes, all with upward-pointing stems and flags. The notation ends with a repeat sign.