

Flute

# ВАЛЬС

из к-ф "Наши соседи"

Б. Мокроусов

аранж. А. Школяр

$\text{♩} = 180$   
*f*

1  
*mf*

8

2  
15  
*f*

1.  
2.

# ВАЛЬС

из к-ф "Наши соседи"

Б. Мокроусов

аранж. А. Школяр

$\text{♩} = 180$

*f*

*f*

1

*mf*

7

2

*f*

*f*

3

*f*

*f*

1.

2.

*f*

# ВАЛЬС

из к-ф "Наши соседи"

Б. Мокроусов  
аранж. А. Школяр

$\text{♩} = 180$

*f*

**1**

*mf*

**7**

**2**

**3**

*f*

1. 2.

Alto Saxophone 1

# ВАЛЬС

из к-ф "Наши соседи"

Б. Мокроусов

аранж. А. Школяр

$\text{♩} = 180$

*f*

1 3

*mf*

3

2 2

3

*f*

1. 2.

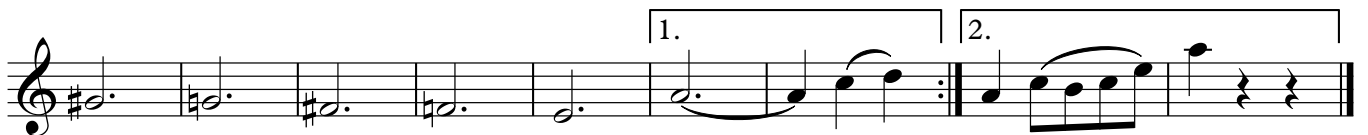
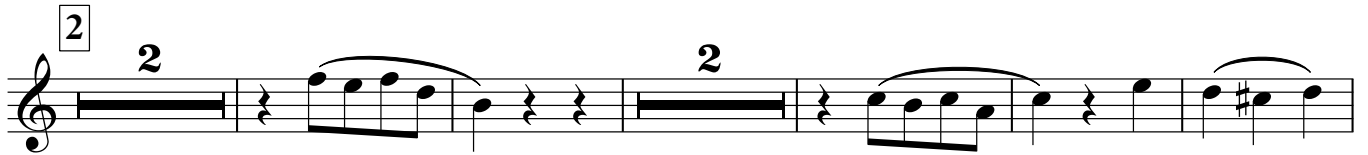
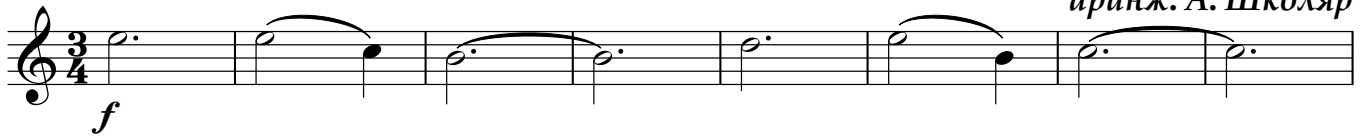
# ВАЛЬС

из к-ф "Наши соседи"

Б. Мокроусов

аранж. А. Школяр

♩ = 180



Trumpet in B $\flat$

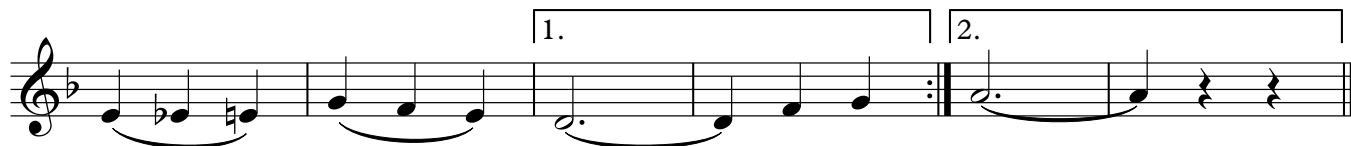
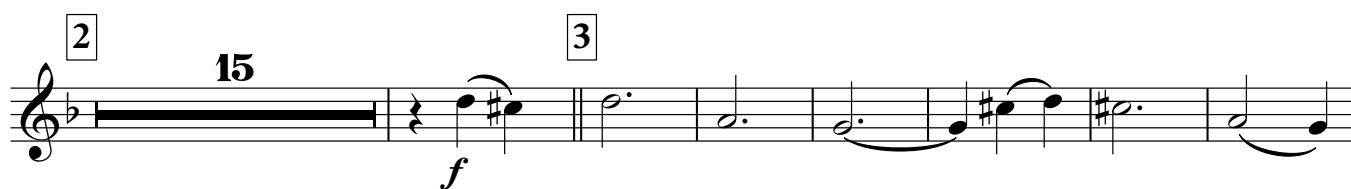
# ВАЛЬС

из к-ф "Наши соседи"

Б. Мокроусов

аранж. А. Школяр

$\text{♩} = 180$



Percussion

# ВАЛЬС

из к-ф "Наши соседи"

Б. Мокроусов  
аранж. А. Школяр

♩ = 180

4 8

*f*

4

1 4

*mf*

4

2 4 8 12

3 4

*f*

4 1. 2.

Marching Bass Drum

# ВАЛЬС

из к-ф "Наши соседи"

Б. Мокроусов

аранж. А. Школяр

♩ = 180

1. *f*

1

*mf*

2

3

*f*





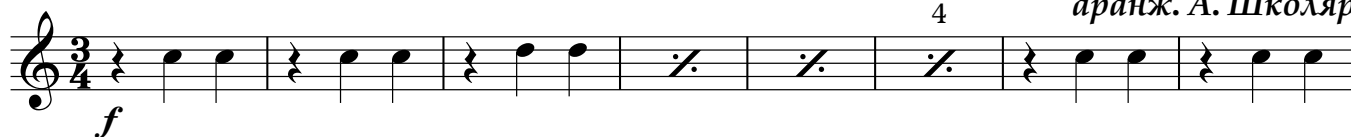
# ВАЛЬС

из к-ф "Наши соседи"

Б. Мокроусов

аранж. А. Школяр

$\text{♩} = 180$



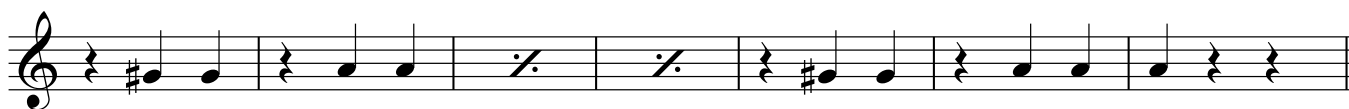
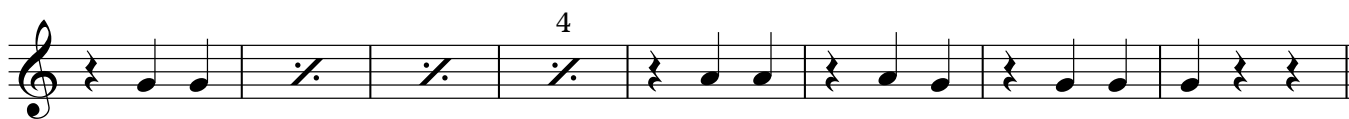
Horn in E♭ 2

# ВАЛЬС

из к-ф "Наши соседи"

Б. Мокроусов  
аранж. А. Школяр

♩ = 180



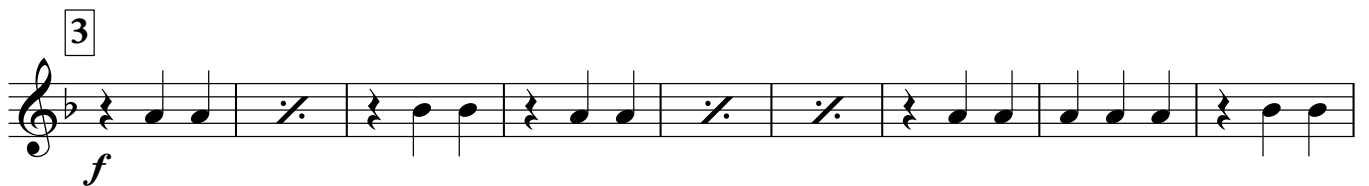
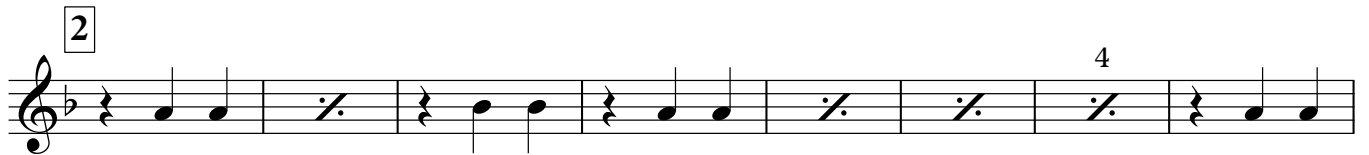
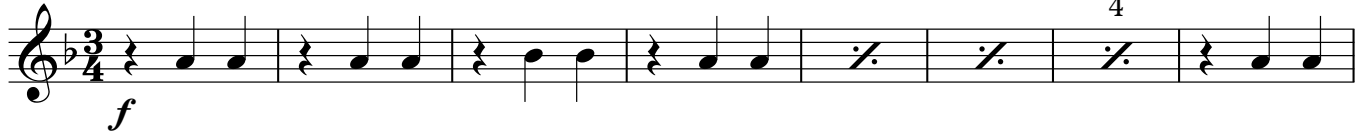


# ВАЛЬС

из к-ф "Наши соседи"

Б. Мокроусов  
аранж. А. Школяр

♩ = 180







Bass in C 2

# ВАЛЬС

из к-ф "Наши соседи"

Б. Мокроусов

аранж. А. Школяр

♩ = 180

1. Musical staff 1: Bass clef, key signature of two flats (B-flat, E-flat), 3/4 time signature. The staff contains a sequence of notes: G2, A2, B2, C3, D3, E3, F3, G3, A3, B3, C4. The first note is marked with a forte 'f' dynamic.

2. Musical staff 2: Bass clef, key signature of two flats, 3/4 time signature. The staff contains a sequence of notes: G2, A2, B2, C3, D3, E3, F3, G3, A3, B3, C4. The first note is marked with a forte 'f' dynamic.

3. Musical staff 3: Bass clef, key signature of two flats, 3/4 time signature. The staff contains a sequence of notes: G2, A2, B2, C3, D3, E3, F3, G3, A3, B3, C4. The first note is marked with a mezzo-forte 'mf' dynamic.

4. Musical staff 4: Bass clef, key signature of two flats, 3/4 time signature. The staff contains a sequence of notes: G2, A2, B2, C3, D3, E3, F3, G3, A3, B3, C4. The first note is marked with a mezzo-forte 'mf' dynamic.

5. Musical staff 5: Bass clef, key signature of two flats, 3/4 time signature. The staff contains a sequence of notes: G2, A2, B2, C3, D3, E3, F3, G3, A3, B3, C4. The first note is marked with a mezzo-forte 'mf' dynamic.

6. Musical staff 6: Bass clef, key signature of two flats, 3/4 time signature. The staff contains a sequence of notes: G2, A2, B2, C3, D3, E3, F3, G3, A3, B3, C4. The first note is marked with a mezzo-forte 'mf' dynamic.

7. Musical staff 7: Bass clef, key signature of two flats, 3/4 time signature. The staff contains a sequence of notes: G2, A2, B2, C3, D3, E3, F3, G3, A3, B3, C4. The first note is marked with a forte 'f' dynamic.

8. Musical staff 8: Bass clef, key signature of two flats, 3/4 time signature. The staff contains a sequence of notes: G2, A2, B2, C3, D3, E3, F3, G3, A3, B3, C4. The first note is marked with a forte 'f' dynamic.

9. Musical staff 9: Bass clef, key signature of two flats, 3/4 time signature. The staff contains a sequence of notes: G2, A2, B2, C3, D3, E3, F3, G3, A3, B3, C4. The first note is marked with a forte 'f' dynamic.