

Варяг

Альт-саксофон 1 in E \flat

А. С. Турищев

$\text{♩} = 120$

1 



13 

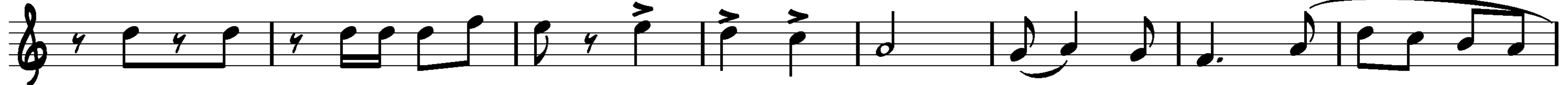
1. 2.




24 2



36 3



44  



Варяг

Альт-саксофон 2 in E \flat

А. С. Турищев

$\text{♩} = 120$

1

13

1. 2.

24

2

36

3

44

4

Варяг

Баритон in B \flat

А. С. Турищев

$\text{♩} = 120$

1

13

1. 2.

24

2

36

3

44

4

Варяг

Кларнет 1 in B \flat

А. С. Турищев

$\text{♩} = 120$

Measures 1-10. The piece begins with a tempo marking of quarter note = 120. The first staff contains measures 1 through 10. It features a trill in measure 1, followed by eighth-note patterns. Measures 2-3 have slurs over eighth notes. Measure 4 has a quarter rest. Measure 5 has a first ending bracket. Measure 6 has a fermata. Measures 7-10 continue with eighth-note patterns.

11

Measures 11-21. Measure 11 has a fermata. Measures 12-15 continue with eighth-note patterns. Measure 16 has a first ending bracket. Measure 17 has a quarter rest. Measure 18 has a second ending bracket. Measure 19 has a fermata. Measures 20-21 continue with eighth-note patterns.

22

Measures 22-33. Measure 22 has a second ending bracket. Measure 23 has a quarter rest. Measures 24-27 have slurs over eighth notes. Measures 28-29 have trills. Measure 30 has a quarter rest. Measures 31-33 continue with eighth-note patterns and trills.

34

Measures 34-41. Measures 34-37 have slurs over eighth notes. Measures 38-39 have trills. Measure 40 has a quarter rest. Measure 41 has a third ending bracket. Measures 42-45 continue with eighth-note patterns.

42

Measures 42-50. Measures 42-45 continue with eighth-note patterns. Measure 46 has a fermata. Measures 47-49 continue with eighth-note patterns. Measure 50 ends with a final cadence.

Варяг

Кларнет 2 in B \flat

А. С. Турищев

♩=120

1

12

1 2

22

2 tr tr

34

tr 3

42

tr

Варяг

Корнет 1 in B \flat

А. С. Турищев

$\text{♩} = 120$

1 



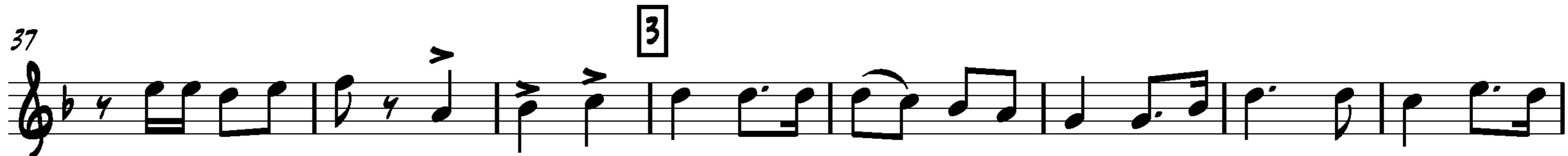
11



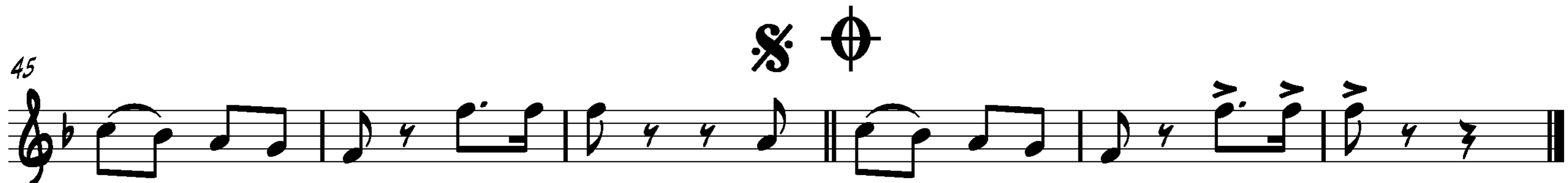
21



37



45



Варяг

Корнет 2 in B \flat

А. С. Турищев

$\text{♩} = 120$

1 ✂

11 ⊕

21 2 8

37 3

45 ✂ ⊕

Варяг

Тромбон 1

А. С. Турищев

♩=120

1

12

1. 2.

23

2

34

3

43

3 1

Варяг

Тромбон 2

А. С. Турищев

♩=120

1

1

12

1. 2.

23

2

34

3

43

ϕ

Варяг

Труба 1 in B \flat

А. С. Турищев

$\text{♩} = 120$

1

13

24

35

43

Варяг

Труба 2 in B \flat

А. С. Турищев

♩=120

1

13

1. 2.

24

2

35

3

43

4

Варяг

Тенор-саксофон in B \flat

А. С. Турищев

♩=120

1

13

1. 2.

24

37

45

1. 2.

Варяг

Туба

А. С. Турищев

♩=120

1



12



1.

2.

23

2

35

3

43



