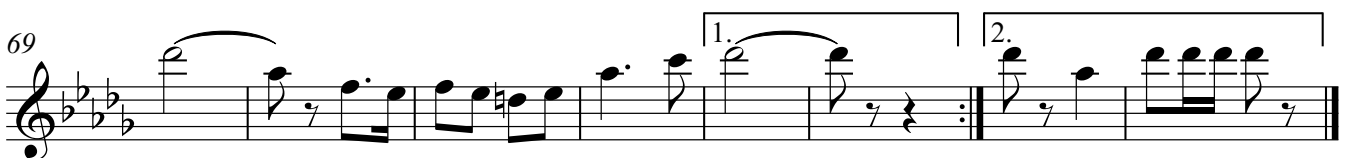
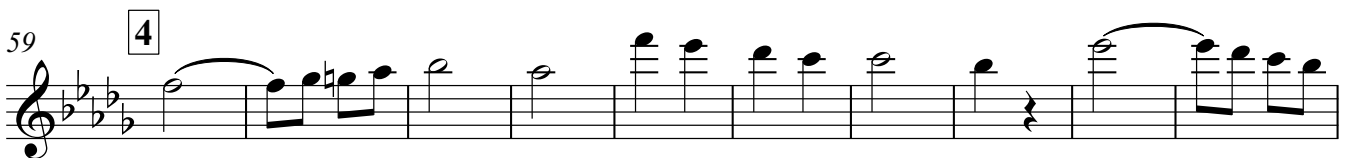
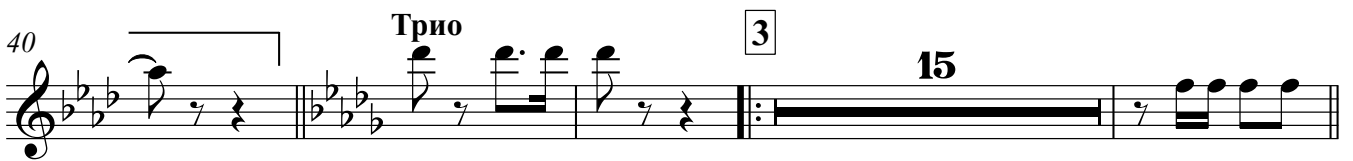


ВОСПИТАННИК

Флейта

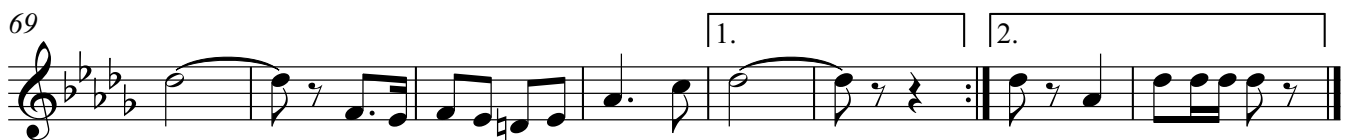
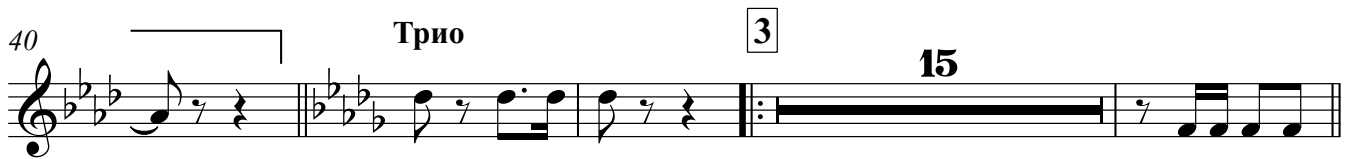
марш



ВОСПИТАННИК

Гобой

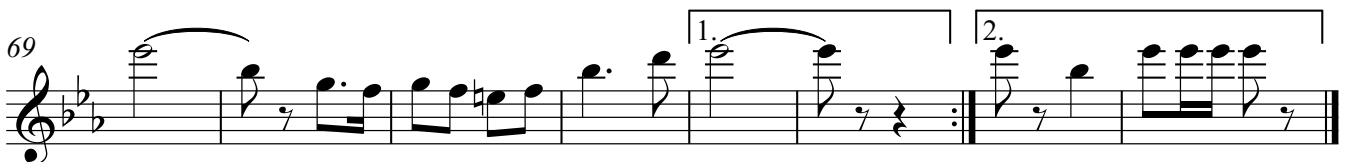
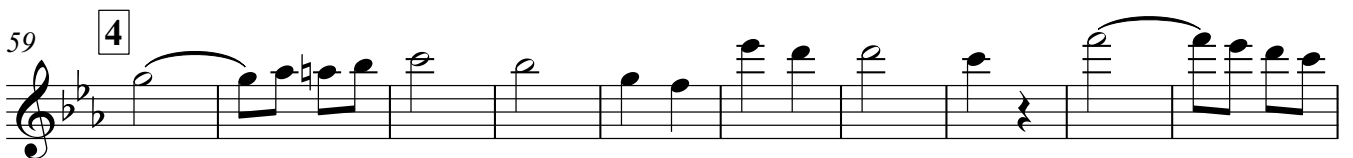
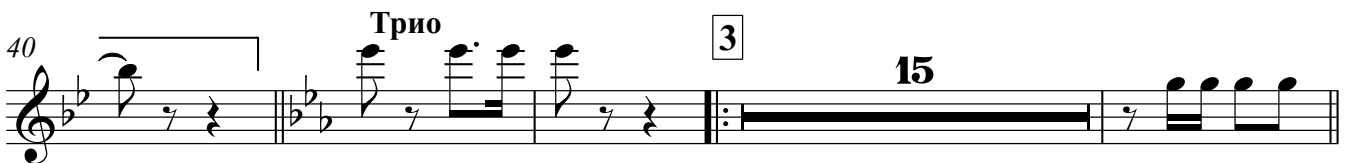
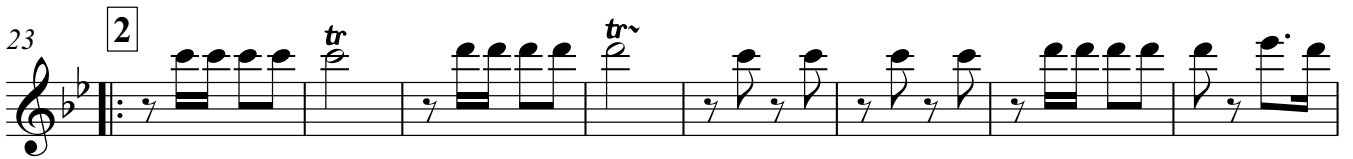
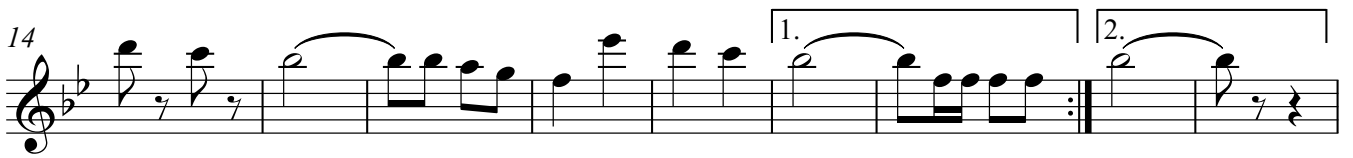
марш



ВОСПИТАННИК

Кларнет 1

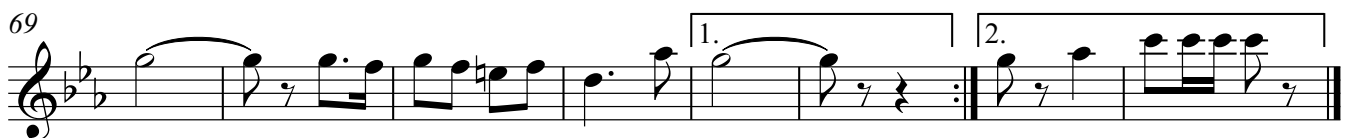
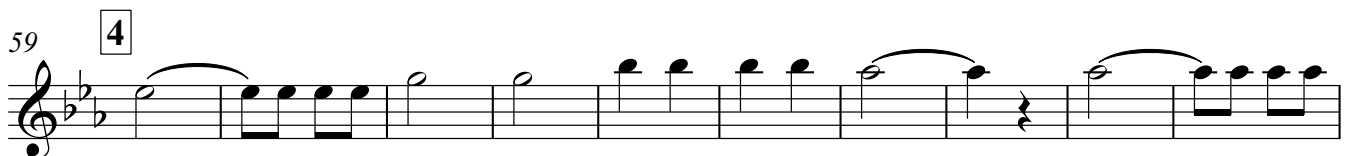
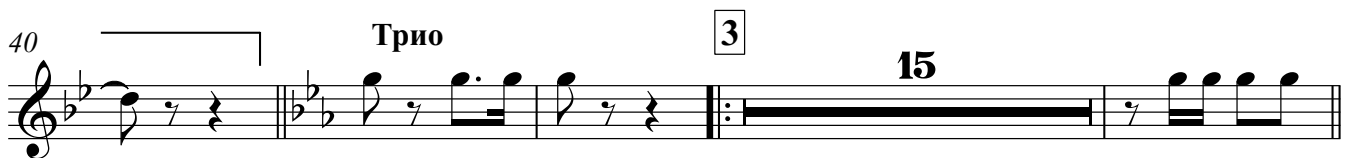
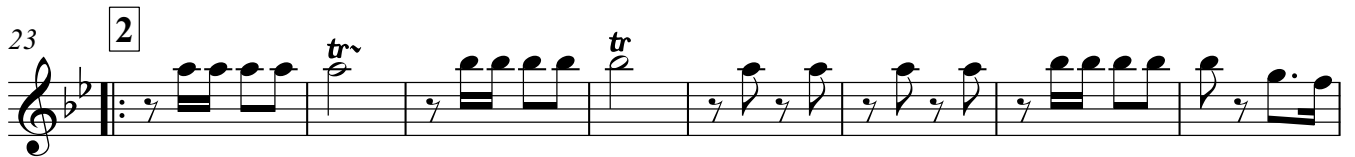
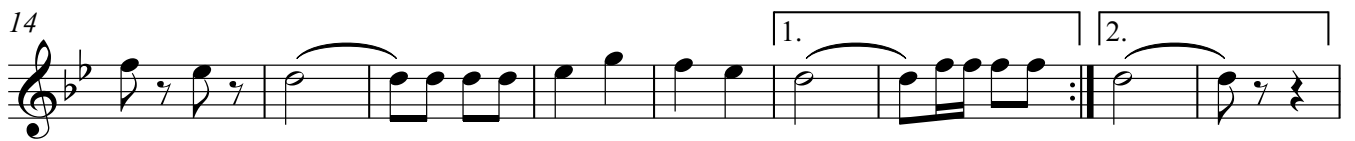
марш



ВОСПИТАННИК

Кларнет 2

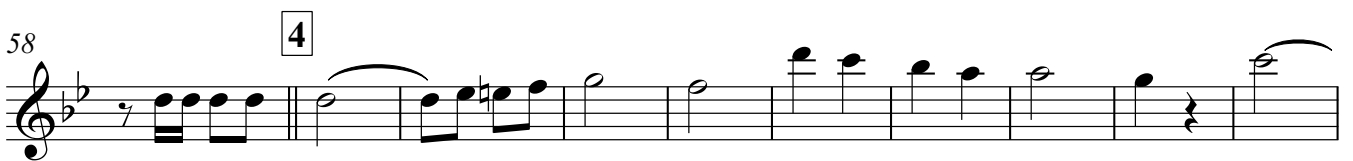
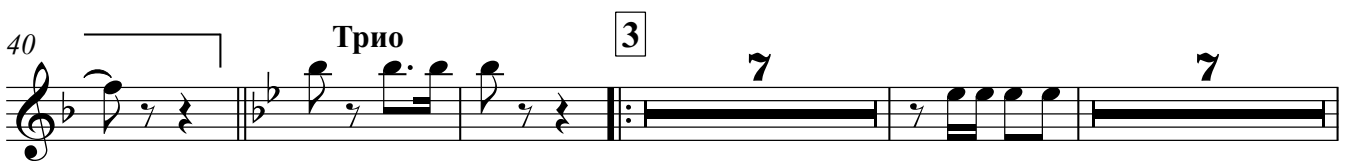
марш



ВОСПИТАНИК

Сакс-альт

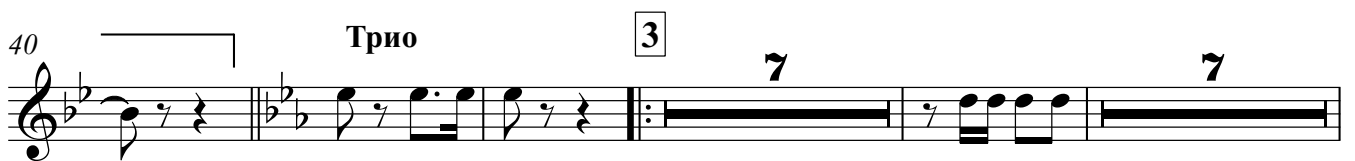
марш



ВОСПИТАНИК

Труба

марш



Малый барабан

ВОСПИТАНИК

марш

2.

ТАСЕТ

— $\frac{2}{4}$ |

|—

Большой барабан

ВОСПИТАНИК

марш

2.

ТАСЕТ

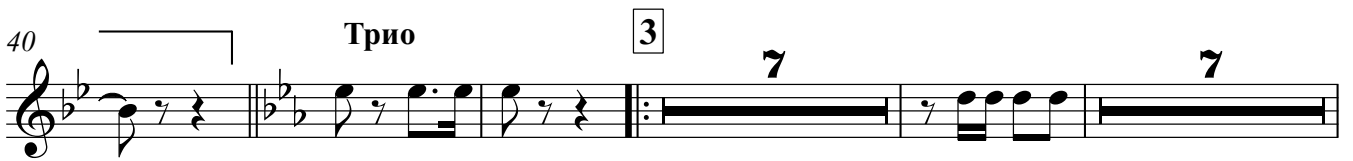
— $\frac{2}{4}$ |

|—

ВОСПИТАНИК

Корнет 1

марш



ВОСПИТАНИК

Корнет 2

марш

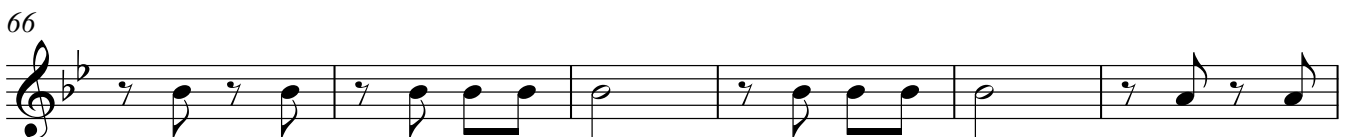
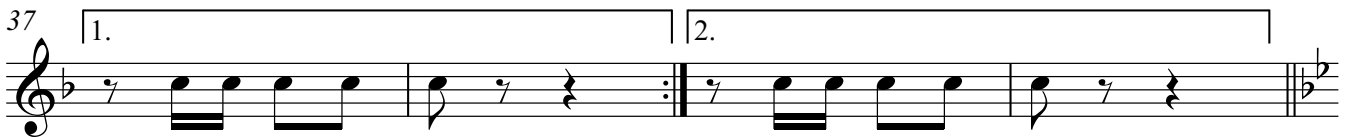


ВОСПИТАНИК

Альт 1

марш

1



Трио

V.S.

2

Альт 1

72

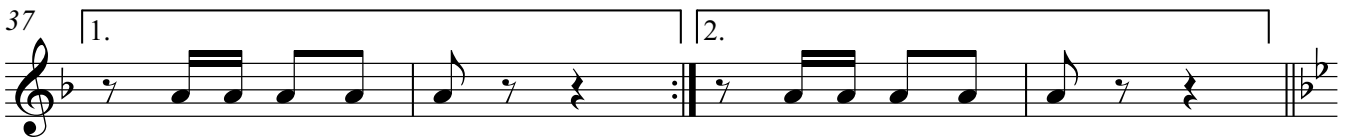
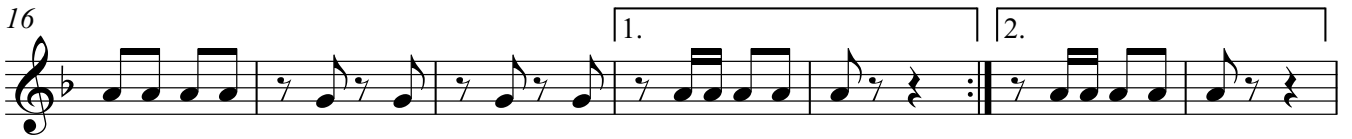
Musical score for Alto 1, measures 72-75. The score is written on a single staff in G major (one sharp) and 4/4 time. It begins with a treble clef and a key signature of one sharp (F#). The first measure (72) contains a quarter rest, followed by quarter notes G4, A4, and B4. The second measure (73) contains a quarter rest, followed by eighth notes G4, A4, B4, and A4. The third measure (74) contains a quarter note G4, a quarter rest, and a quarter note G4. The fourth measure (75) contains a quarter note G4, a quarter rest, and a quarter note G4. The score is divided into two first endings: the first ending (measures 73-74) is marked '1.' and ends with a repeat sign; the second ending (measures 74-75) is marked '2.' and ends with a double bar line.

ВОСПИТАНИК

Альт 2

марш

1



Трио

V.S.

2

Альт 2

71

Musical notation for Alto 2, measures 71-74. The notation is in G major (one flat) and 4/4 time. It consists of a single staff with a treble clef. The melody is as follows:

- Measure 71: Quarter rest, quarter note G4, quarter rest, quarter note A4.
- Measure 72: Quarter rest, quarter note G4, quarter rest, quarter note A4.
- Measure 73: Quarter rest, eighth notes G4-A4, eighth notes G4-A4, quarter note G4, quarter note F#4.
- Measure 74: Quarter note G4, quarter note F#4, quarter note E4, quarter note D4.

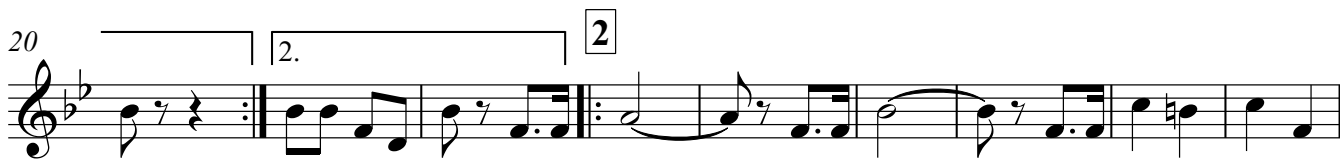
There are two first endings (1.) and two second endings (2.) indicated by brackets above the staff. The first ending covers measures 73 and 74. The second ending covers measures 71 and 72. A repeat sign is placed at the end of the first ending.

Тенор 1

ВОСПИТАННИК

марш

1



Трио



ВОСПИТАНИК

марш

1



73

1.

2.

ВОСПИТАНИК

Баритон

марш

1

11

20

29

37

41

50

59

69

Трио

ВОСПИТАНИК

Бас

марш

1



10



17



23

2



32



40

Трио

3



47



53



59

4



67



V.S.

2

Бас

72

Musical score for Bass, measures 72-75. The score is written in bass clef with a key signature of three flats (B-flat, E-flat, A-flat). The melody consists of eighth and quarter notes. A first ending bracket covers measures 73 and 74, and a second ending bracket covers measures 74 and 75. The piece concludes with a double bar line at the end of measure 75.